

3 Mara Court, Ashmore

5 🚗 3 🚗 2 🚗

Prime Dual Living Opportunity for Renovators!

FOR SALE
Under Offer

Potential in Spacious Dual-Living Home

AGENTS

Ross Lukin
0419 555 022
ross.lukin@ljhooker.com.au

This large family home offers exceptional flexibility and endless possibilities. Designed with a dual-living floor plan, it's perfect for extended families, investors, or those seeking space to grow.

AGENCY

LJ Hooker Ashmore
(07) 5526 9722

Upstairs, you'll find a light-filled lounge and dining area, two bedrooms, kitchen, bathroom, and laundry - all opening onto a large balcony with elevated views.

Downstairs, in a separate wing of the home, there are three additional bedrooms including a master with ensuite, a second spacious laundry, and three oversized living areas - ideal for transforming into a media room, formal lounge, or additional entertaining spaces.

The heart of the home is the expansive kitchen, which overlooks the sparkling in-ground pool, perfectly positioned on the northern side and adjacent to a covered patio - ideal for relaxed outdoor living and entertaining.

Located in a quiet, elevated street, this home is a renovator's dream

All information contained therein is gathered from relevant third parties sources.
We cannot guarantee or give any warranty about the information provided.
Interested parties must rely solely on their own enquiries.

 **LJ Hooker**

with plenty of room to add your personal touch. Don't miss the chance to make it your own!

MORE DETAILS

Property ID	R2J0F
Property Type	House
Land Area	779 m2
Including	Ensuite
	Air Conditioning
	Toilets (4)
	Balcony
	Built-in-Robes
	Area Views
	Partial Fit Out
	Pool

Ross Lukin 0419 555 022

Director | ross.lukin@ljhooker.com.au

LJ Hooker Ashmore (07) 5526 9722

167 Cotlew Street, ASHMORE QLD 4214

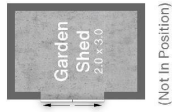
ashmore.ljhooker.com.au | admin.ashmore@ljhooker.com.au



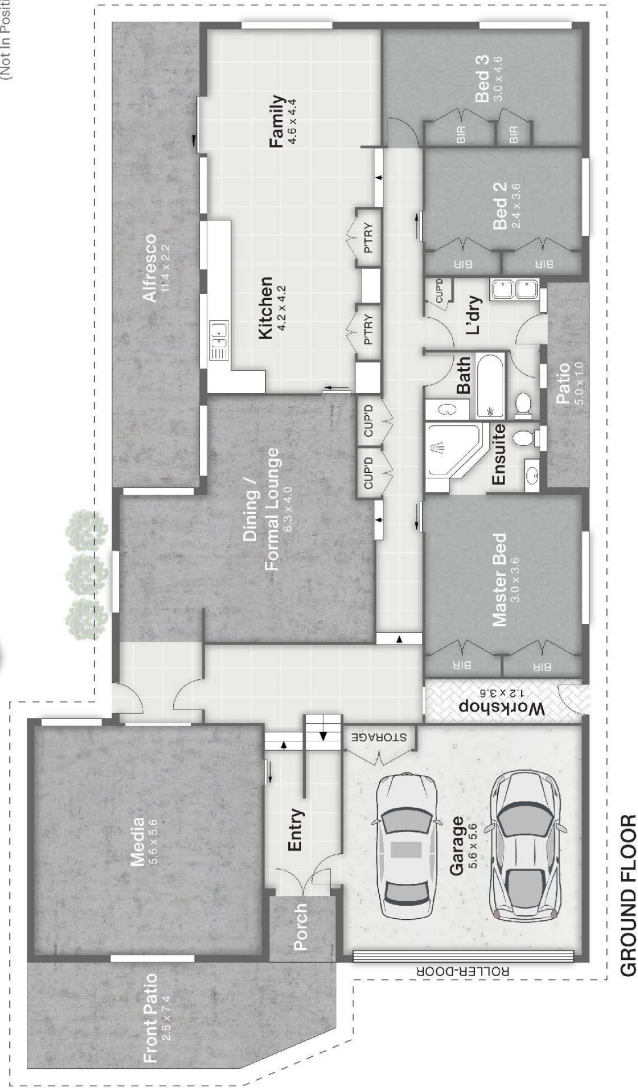
All information contained therein is gathered from relevant third parties sources.
We cannot guarantee or give any warranty about the information provided.
Interested parties must rely solely on their own enquiries.



ROSS LUKIN
0419 555 022



(Not In Position)



3 Mara Court ASHMORE

5 | 3 | 2 | 402m²



DISCLAIMER
This is not a legal document; all measurements and dimensions are approximate and are subject to errors, omission or misstatement. No liability will be accepted. Plans are shown for marketing purposes only.