



19 Glenmore Drive, Ashmore

Sold by Darrell Johnson - 0403 803 704

PRIVATE, EASY-LIVING ONE-LEVEL QUARTER-ACRE (1,089m²) RETREAT IN THE HIGHLY- SOUGHT, FAMILY-FRIENDLY "PARADISE RIVER" PRECINCT OF CENTRAL ASHMORE !! Nestled in one of the Gold Coast's best central family-friendly locations, this very private family home with highly-desirable North-East aspect is nestled on a large, flat quarter-acre (1,089m²) land holding and offers everything that a growing family could want or need, whilst the highly-sought "Paradise River" precinct is a sensational family location in central Ashmore that many people don't even know exists, with five parks and the Nerang River at your finger-tips, the area offers an enviable lifestyle with plenty of open space to enjoy, along with a real "community feel" amongst the lucky property owners that are fortunate enough to live there.

Key features include ...

- Prime, central & convenient location in the heart of the Gold Coast ... only minutes to anywhere and everywhere that you might want to be, yet tucked away in a quiet & family-friendly precinct
- Huge quarter-acre (1,089m²) allotment with highly-desirable North-East aspect
- Very well built, solid brick and tile home ... easy one-level living

4 🏠 3 🚿 2 🚗

FOR SALE
\$2,250,000

AGENTS

Darrell Johnson
0403 803 704
djohnson@ljhooker.com.au

AGENCY

LJ Hooker Ashmore
(07) 5526 9722

All information contained therein is gathered from relevant third parties sources. We cannot guarantee or give any warranty about the information provided. Interested parties must rely solely on their own enquiries.

 **LJ Hooker**

- Private, fully renovated and beautifully presented home throughout, with separate living spaces for all the family ... move straight in and enjoy your new home !!!
- Internal living flows seamlessly to outdoor spaces
- Huge yard, complete with cubby-house and swings, making it the perfect place for children & pets to play safely for hours on end
- Covered outdoor entertaining area enjoys the resort-style pool and private yard-space
- Welcoming formal lounge area overlooks the front yard with feature Pandanus tree
- Centrally located & very functional kitchen offers an abundance of storage & bench-space, whilst overlooking the pool & outdoor areas
- Large open-plan living/dining area sits adjacent to the kitchen and flows easily to outdoors
- Separate games/gym/media lounge
- The Master retreat enjoys a peaceful outlook to the yard and pool, whilst also boasting a large walk-in robe, ensuite and adjoining study or sun/sitting room
- Huge 2nd Master bedroom/guest room complete with walk-in robe and gorgeous modern ensuite
- Two other big bedrooms with large modern family bathroom & separate toilet
- Generous modern laundry opens to outdoor drying area
- Secure rear gate access opens to acres of green-space, walking and cycling tracks ... perfect for exercising, exploring and walking your canine friends
- Plenty of storage throughout the home
- Air-conditioning & ceiling fans throughout
- Camera to mobile monitoring security system surround the property for added peace of mind
- Huge 19kW solar battery power system with battery storage and charger for your electric vehicle
- Garden/storage sheds

Call your local Ashmore area specialist of over 25 years (and proud Ashmore resident for 37 years) Darrell Johnson on 0403 803 704 to view this very special property anytime by appointment, otherwise we look forward to seeing you at one of our scheduled open homes.

ASHMORE ... A FANTASTIC PLACE TO LIVE & INVEST !!!

Looking to live or invest in property/real estate in Ashmore? Ashmore is the most practical and central suburb the Gold Coast has to offer, located close enough to all the action yet far enough away from it all it is frequently high-lighted on major property reports as a recommended investment "Hot Spot" assured of ongoing demand and outstanding capital growth with real estate in the area very much in demand. With its elevated location, the vast majority of Ashmore is on safe, high, flood-free ground with numerous parks, schools, shopping centres, sporting & medical facilities all at your finger-tips, whilst offering easy access and only minutes away via main arterial roads to beaches, the Broadwater & parklands, cafes, restaurants, several CBD's and the M1 giving access to Brisbane & Coolangatta airports. Southport CBD, China Town, the light rail system, Griffith University, Gold Coast Hospital, Pindara Private hospital and other medical precincts are all only minutes away.

Ashmore is a fantastic place to live and invest in for both solid capital returns and central & convenient living, and because of this the suburb is fast becoming even more of a highly-sought after location than its current residents (and investors) already know it to be !!!

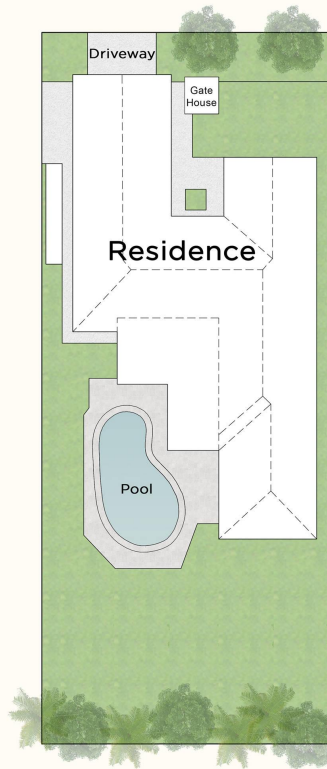
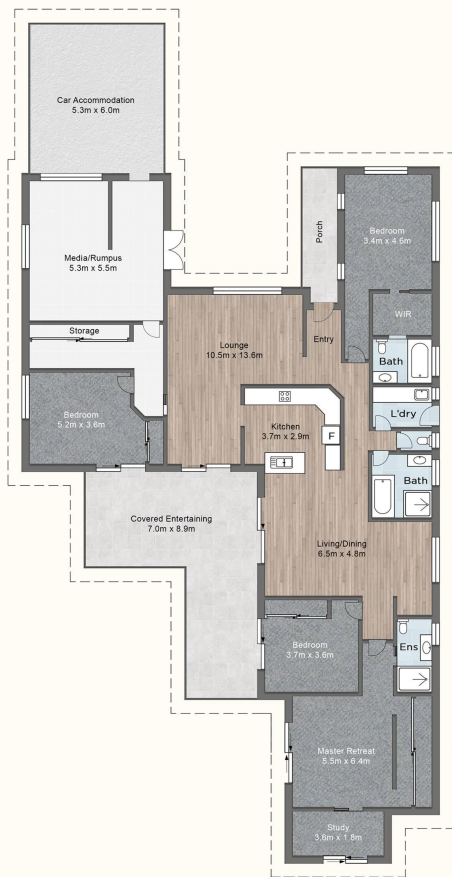
MORE DETAILS

Property ID Q1J0F
Property Type House
Land Area 1089 m2
Including Ensuite
Study
Air Conditioning
Toilets (3)
Pool
Courtyard
Gym
Dishwasher
Outdoor Entertaining
Floorboards
Built-in-Robes
Secure Parking
Fully Fenced
Remote Garage
Solar Panels
Close to Schools
Close to Shops
Close to Transport
Pool
Prestige Homes
Security System

Darrell Johnson 0403 803 704
Sales Professional | djohnson@ljhooker.com.au

LJ Hooker Ashmore (07) 5526 9722
167 Cotlew Street, ASHMORE QLD 4214
ashmore.ljhooker.com.au | admin.ashmore@ljhooker.com.au





LJ Hooker

Ashmore

19 GLENMORE DRIVE
ASHMORE

4 3 2

Darrell Johnson
0403 803 704

Measurements are approximate only
and no responsibility is taken
for any error, omission, or mis-statement.
This is for illustrative purposes only
and should be used as such by
any prospective purchaser.
www.visualmotion.com.au

All information contained therein is gathered from relevant third parties sources.
We cannot guarantee or give any warranty about the information provided.
Interested parties must rely solely on their own enquiries.

LJ Hooker