

Ashmore, 14 Tumbarumba Avenue

Fall in love with the lifestyle, stay for that feeling of home!

Tucked behind an electric gate in a quiet Ashmore Street, this beautifully updated home is full of warmth, character, and modern charm - designed for living, entertaining, and loving every moment.

From the moment you walk in, you'll notice the attention to detail. A sleek kitchen with high-end Smeg appliances, gas cooking, and even a built-in coffee machine means mornings are a little more luxurious. The bathroom is fresh and modern, the bedrooms are cool and comfortable with mirrored robes and ceiling fans, and the separate laundry and huge storage spaces make life easier.

The heart of the home? A stunning covered outdoor entertaining area that flows straight from the kitchen - complete with built-in bar, outdoor kitchen, kids' play zone, and plenty of room to add a pool if you wish. Whether you're hosting friends or enjoying a quiet Sunday, this space just works.



Disclaimer: All information contained therein is gathered from relevant third parties sources. We cannot guarantee or give any warranty about the information provided. Interested parties must rely solely on their own enquiries.



For Sale
Offers Over \$1,049,500

View
By Appointment

Contact
Alex McCormack
0411 510 099
amccormack.southport@ljhooker.com.au

Ben Latimer
0402 921 314
blatimer.southport@ljhooker.com.au

LJ Hooker Southport
(07) 5591 5222

You'll love the extras too - solar power, gas hot water, air con in the living and master, garden shed, double carport, plumbed fridge, integrated dishwasher, and even storage in the roof. It's practical, stylish, and completely move-in ready.

This is the one where lifestyle meets livability. All that's missing is you.

Features you'll love:

- *Renovated kitchen with Smeg gas cooktop, oven, steamer, microwave & coffee machine
- *Integrated dishwasher and plumbed fridge space
- *Renovated bathroom with stylish modern finishes
- *Air conditioning in lounge and master, ceiling fans throughout
- *Light-filled living space with a relaxed, welcoming vibe
- *Beautiful covered outdoor entertaining area with bar and outdoor kitchen
- *Electric front gate, fully fenced yard and double carport
- *Solar power, hot water and gas cooking = energy efficient living
- *Separate laundry, huge corner pantry, plus storage in roof void
- *Built-in mirrored robes in all bedrooms
- *Garden shed, kids play area, and room for a pool

Homes like this don't come up often - and they don't last long. Contact Alex on 0411 510 099 today and make it yours before someone else does.

More About this Property

Property ID	1049F4K
Property Type	House
House Size	255 m2
Land Area	707 m2
Including	Air Conditioning Dishwasher Built-in-Robes Solar Hot Water

Alex McCormack 0411 510 099

Principal/Licensee | amccormack.southport@ljhooker.com.au

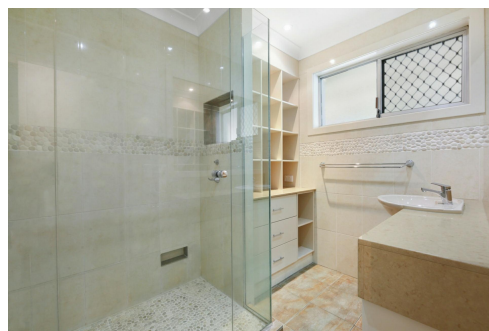
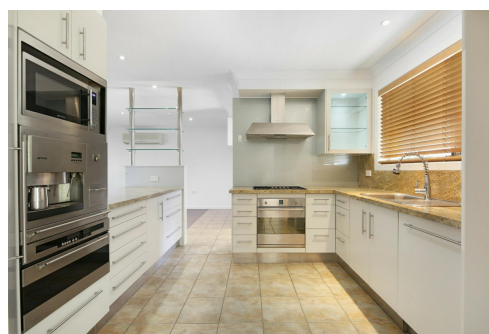
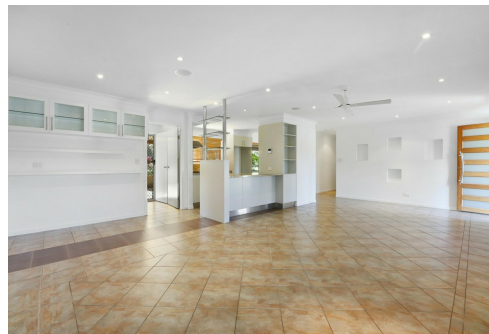
Ben Latimer 0402 921 314

Sales Consultant/Director | blatimer.southport@ljhooker.com.au

LJ Hooker Southport (07) 5591 5222

2308-2309 Level 3 Southport Central, Tower 2, 5 Lawson Street, SOUTHPORT QLD 4215

southport.ljhooker.com.au | southport@ljhooker.com.au



LJ Hooker Southport
(07) 5591 5222

Disclaimer: All information contained therein is gathered from relevant third parties sources. We cannot guarantee or give any warranty about the information provided. Interested parties must rely solely on their own enquiries.

Alex McCormack
0411 510 099

Ben Latimer
0402 921 314

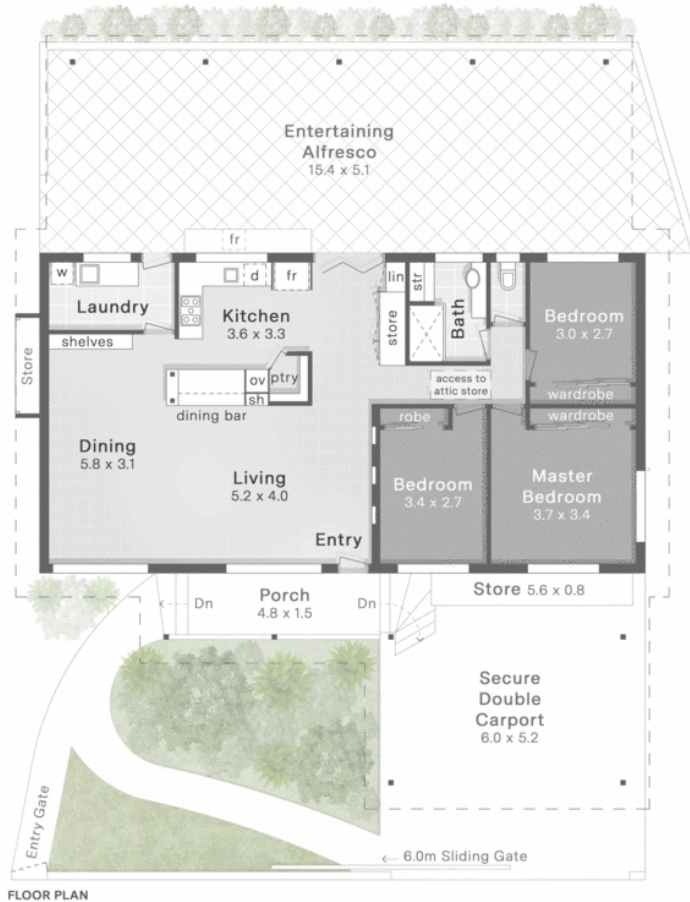
14 Tumarumba Avenue
Ashmore

- 707m² Land Size
- 3 Bed
- 1 Bath
- 2 Car

Internal 122m²
Alfresco & Porch 92m²
Carport & Stores 41m²
Total 255m²

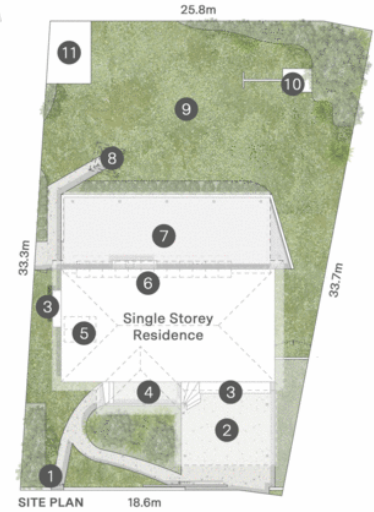


DISCLAIMER: This is not a legal document therefore all measurements and information provided is subject to survey. No permission is given to use or alter this Floor Plan without the consent of FloorScape. The overall presentation style, layout, imagery, fonts, background, colours and terminology has been originally created by FloorScape and is subject to strict copyright. No ownership is taken of building design. Find out more at floorscape.au



FLOOR PLAN

1. Entry Gate
2. Secure Double Carport
3. Storage
4. Entry Porch
5. Solar Hot Water
6. PV Solar Panels
7. Entertaining Alfresco
8. Hills Hoist
9. Fenced Grass Yard
10. Kids' Play Equipment
11. Garden Shed (4.5 x 3.2)



SITE PLAN

Tumarumba Avenue