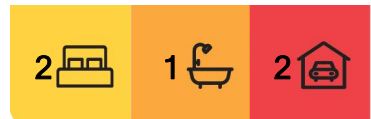


Ashmore, 1/39 Corunna Crescent

SOLD by Darrell Johnson 0403 803704 - LJ Hooker Ashmore



For Sale
\$695,000+ buyers

View
ljhooker.com.au/DDJ0F

Contact
Darrell Johnson
0403 803 704
djohnson@ljhooker.com.au

PERFECT ENTRY-LEVEL HOME IDEAL FOR THE FIRST HOME BUYER, INVESTOR OR DOWNSIZER ... MOVE STRAIGHT IN AND ENJOY !!!
SPACIOUS, ONE-LEVEL DUPLEX ... CENTRAL & CONVENIENT TO EVERYTHING ...
NO BODY CORPORATE FEES !!! Located an easy stroll to just about everything you could possibly want or need, this spacious duplex with a sensational outlook over peaceful parkland is ready to move into straight away ... enjoy the convenience of a low maintenance, easy living duplex in one of the Gold Coast's most central inner-city suburbs ... absolutely ideal for the first-home buyer or down-sizer to call home, or for the investor looking for a solid investment in the heart of highly-sought Ashmore !!!

Key features include ...

- * Quiet, central, and convenient location in the heart of highly-sought Ashmore
- * Easy access to Ashmore shops, schools, athletic fields, public transport, PCYC, parks



LJ Hooker Ashmore
(07) 5526 9722

Disclaimer: All information contained therein is gathered from relevant third parties sources. We cannot guarantee or give any warranty about the information provided. Interested parties must rely solely on their own enquiries.

and much, much more

- * Solid brick and tile construction ... easy one-level living, with access to large yard and peaceful gardens
- * Open plan living flows easily to a sizeable sun-room/study area
- * The al-fresco deck area overlooks the tranquil garden/yard, Loders Creek and parkland beyond ... with no neighbours behind it is very private and quiet
- * Spacious, centrally located kitchen with large dining area adjacent
- * The Master bedroom has a nice tranquil outlook & opens to the peaceful front yard & garden ... walk-through robe to the two-way bathroom that acts as an ensuite for the Master
- * Separate toilet
- * Generous 2nd bedroom
- * Spacious laundry opens to outdoor drying area and yard
- * The size and layout of the combined bathroom, toilet and laundry areas lend themselves to be easily converted to a separate ensuite with a 2nd bathroom/laundry combined
- * Neat and tidy, low maintenance lawn and gardens
- * Under-house storage area
- * No body corporate fees, and even has its own insurance (not shared with the adjoining villa)
- * Walk straight through Ashmore Apex Park (at the end of the street) to Ashmore Plaza & convenience outlets; walk in the other direction and straight across a bridge to Sports Oval and PCYC. Talk about convenient locations —WOW !!!

This is a great value, move-straight-in, entry-level home that is perfect for the first-home owner, investor or down-sizer in the heart of highly-sought Ashmore ... contact your local Ashmore area specialist Darrell Johnson on 0403 803704 for further information, otherwise we look forward to seeing you at one of our scheduled open homes.

ASHMORE ... WHAT A GREAT PLACE TO LIVE AND INVEST !!!

Ashmore is the most practical and central suburb the Gold Coast has to offer, located close enough to all the action yet far enough away from it all ... it is frequently high-lighted on major property reports as a recommended investment "Hot Spot" assured of ongoing demand and outstanding capital growth with real estate in the area very much in demand. With its elevated location, the vast majority of Ashmore is on safe, high, flood-free ground with numerous parks, schools, shopping centres, sporting & medical facilities all at your finger-tips, whilst offering easy access and only minutes away via main arterial roads to beaches, the Broadwater & parklands, cafes, restaurants, several CBD's and the M1 giving access to Brisbane & Coolangatta airports. Southport CBD/China Town, the light rail system, Griffith University, Gold Coast Hospital, Pindara Private hospital and other medical precincts are all only minutes away, as are Pacific Fair, Robina Town Centre, Australia Fair and Runaway Bay shopping centres. Ashmore is a fantastic place to live and invest in for both solid capital returns and central & convenient living, and because of this the suburb is truly becoming even more of a highly-sought after location than its current residents (and investors) already know it to be !!!

Disclaimer: Whilst every effort has been made to ensure the accuracy of these particulars, no warranty is given by the vendor or the agent as to their accuracy. Interested parties should not rely on these particulars as representations of fact but must instead satisfy themselves by inspection or otherwise.



LJ Hooker Ashmore
(07) 5526 9722

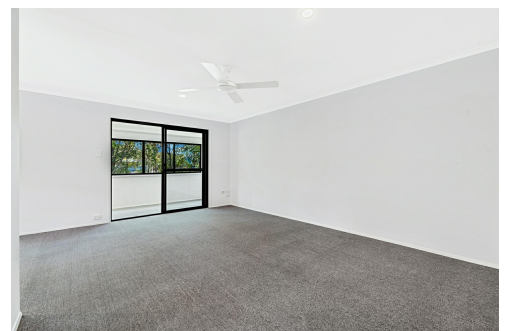
Disclaimer: All information contained therein is gathered from relevant third parties sources. We cannot guarantee or give any warranty about the information provided. Interested parties must rely solely on their own enquiries.

More About this Property

Property ID	DDJ0F
Property Type	House
Including	Ensuite Air Conditioning Toilets (1) Courtyard Balcony Built-in-Robes Fully Fenced Close to Schools Close to Shops Close to Transport

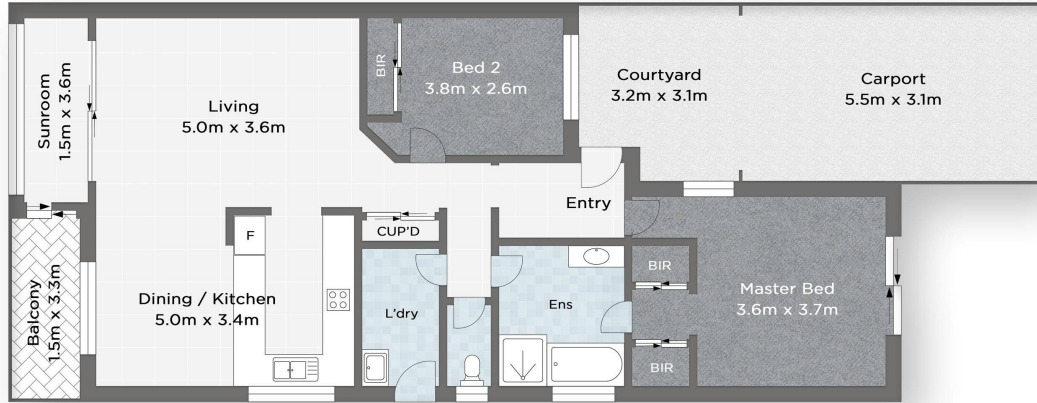
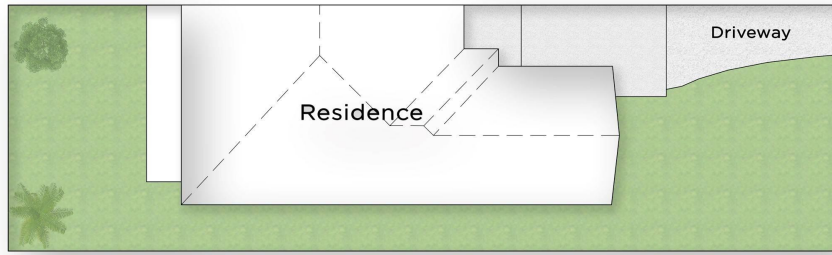
Darrell Johnson 0403 803 704
Sales Professional | djohnson@ljhooker.com.au

LJ Hooker Ashmore (07) 5526 9722
167 Cotlew Street, ASHMORE QLD 4214
ashmore.ljhooker.com.au | admin.ashmore@ljhooker.com.au




LJ Hooker Ashmore
(07) 5526 9722

Disclaimer: All information contained therein is gathered from relevant third parties sources. We cannot guarantee or give any warranty about the information provided. Interested parties must rely solely on their own enquiries.



1/39 CORUNNA CRESCENT, ASHMORE

 Bed 2
  Bath 1
  Car 2

Darrell Johnson 0403 803 704 

Measurements are approximate only and no responsibility is taken for any error, omission, or mis-statement. This is for illustrative purposes only and should be used as such by any prospective purchaser. www.visualmotion.com.au