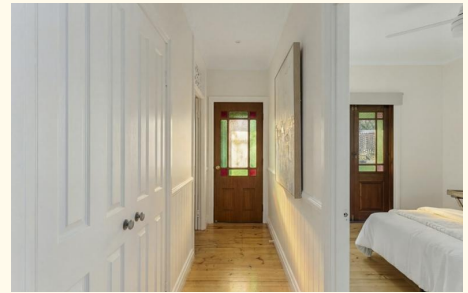




Sold



136 Ashgrove Avenue, Ashgrove


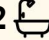

CUTE AND COSY QUEENSLANDER EMPTY & READY TO MOVE IN!!!

Combining timeless character with modern functionality, this gorgeous Queenslander offers a highly desired low-maintenance lifestyle in the heart of leafy Ashgrove. From the polished timber floors and traditional VJ walls to the expansive entertainer's deck and sparkling inground pool, every element of this home has been designed for comfort and effortless style.

The upper level features a light-filled open-plan living area that flows seamlessly through French doors to a massive undercover deck. Overlooking the lush neighbourhood and the pool area, complete with its own tropical Bali Hut, this is the ultimate setting for weekend BBQs or quiet afternoon drinks. The designer kitchen is a chef's delight, boasting stone benchtops, a gas Blanco cooktop, and high-end stainless-steel appliances. Downstairs, the home transitions into a versatile modern retreat with polished concrete flooring.

Key Features:

Character-filled Queenslander with a blend of traditional charm and

4  2  1 

FOR SALE
Contact Agent

AGENTS

David Brown
0432 010 020
david.brown@ljhooker.com.au

Justin Faber
0466 280 479
justin.faber@ljhooker.com.au

AGENCY

LJ Hooker Oxenford
(07) 5632 8428

modern finishes

4 spacious bedrooms (3 upstairs with built-ins, 1 downstairs with ensuite)

2 modern bathrooms including a private lower-level ensuite

Open-plan living and dining with air-conditioning and polished timber floors

Gourmet kitchen with stone benchtops, gas cooking, dishwasher.

Huge undercover entertaining deck with elevated leafy views

Inground swimming pool with a tropical Bali Hut

Large, air-conditioned media room downstairs

Internal stairs connecting both levels for easy family flow

- maintenance polished concrete flooring on the lower level

Secure garage plus additional off-street parking

Solar power system installed for energy efficiency

Location & Lifestyle:

Prime Ashgrove position just 4km from the Brisbane CBD

Walking distance to high-frequency buses, local shops, and vibrant cafés

Moments from prestigious schools and beautiful parklands

Easy access to restaurants and essential amenities

This home offers a rare opportunity for families or professionals to secure a sophisticated, low-maintenance lifestyle in one of Brisbane's most sought-after suburbs. Contact us today to arrange your inspection.

Disclaimer:

We have in preparing this information used our best endeavours to ensure that the information contained herein is true and accurate, but accept no responsibility and disclaim all liability in respect of any errors, omissions, inaccuracies or misstatements that may occur. Prospective purchasers should make their own enquiries to verify the information contained herein.

MORE DETAILS

Property ID	NUJ0C
Property Type	House
Land Area	400 m2

David Brown 0432 010 020

Principal | LREA | david.brown@ljhooker.com.au

Justin Faber 0466 280 479

Sales Associate to David Brown | justin.faber@ljhooker.com.au

LJ Hooker Oxenford (07) 5632 8428

13/5 Michigan Drive, OXFENFORD QLD 4210

oxenford.ljhooker.com.au | oxenford@ljhooker.com.au





136 Ashgrove Ave, Ashgrove

BED 4 BATH 2 CAR 3

Internal: 194 m² | External: 54 m² | Approx Total: 248 m²

Whilst every attempt has been made to ensure the accuracy of the floor plan contained here, measurements of doors, windows, rooms and any other item are approximate and no responsibility is taken for any error, omission, or misstatement. This plan is for illustrative purposes only and should only be used as such by any prospective purchaser.

