

12/5 Henry Street, Ashfield

2 🏠 1 🚿 1 🚗

## Sold by LJ Hooker Ashfield | Inner West

### FOR SALE

Sold by LJ Hooker Ashfield | Inner West

### AGENTS

Domenic Bucciarelli  
0411 199 466  
domenic@ljha.com.au

Dylan Bozicevic  
0449 787 123  
dylan@ljha.com.au

### AGENCY

LJ Hooker Ashfield  
(02) 9797 6044

Perfectly positioned on a peaceful tree-lined street, this charming apartment sits on the top floor of a well-maintained, secure red brick building.

Located just moments from Hammond Park and within easy reach of Ashfield Station, Ashfield Mall, Haberfield Shopping village, and a variety of local cafés and eateries, it offers both convenience and tranquility providing an ideal opportunity for first-home buyers or investors alike.

#### Features Include:

- Two well-proportioned bedrooms, both with built-in robes
- Light-filled living area with pleasant leafy outlook
- Updated kitchen and tidy bathroom
- Top-floor position in a secure, solid red brick building
- Dedicated car space for off-street parking

**DISCLAIMER:** This advertisement contains information provided by third parties. While all care is taken to ensure otherwise, LJ Hooker Ashfield does not make any representation as to the accuracy of the information contained in the advertisement, does not accept and responsibility or liability and recommends that any client make their

All information contained therein is gathered from relevant third parties sources. We cannot guarantee or give any warranty about the information provided. Interested parties must rely solely on their own enquiries.

 **LJ Hooker**

own investigations and enquiries. All images are indicative of the property only.

## MORE DETAILS

Property ID                    1ACUF8B  
Property Type                Unit

### **Domenic Bucciarelli 0411 199 466**

Principal-Licensee in Charge | [domenic@ljha.com.au](mailto:domenic@ljha.com.au)

### **Dylan Bozicevic 0449 787 123**

Sales Associate | [dylan@ljha.com.au](mailto:dylan@ljha.com.au)

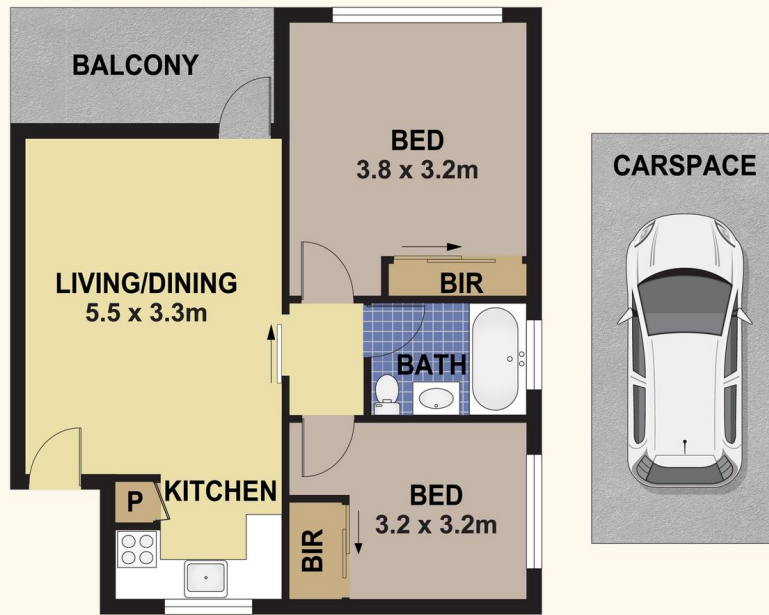
### **LJ Hooker Ashfield (02) 9797 6044**

216 Liverpool Road, ASHFIELD NSW 2131  
[ashfield.ljhooker.com.au](http://ashfield.ljhooker.com.au) | [ashfield@ljha.com.au](mailto:ashfield@ljha.com.au)



Location Shot - Hammond Park

All information contained therein is gathered from relevant third parties sources.  
We cannot guarantee or give any warranty about the information provided.  
Interested parties must rely solely on their own enquiries.



## 1/5 HENRY STREET, ASHFIELD

UNIMER

SHOWN ARE FOR MARKETING PURPOSES ONLY, ALL DIMENSIONS ARE APPROXIMATE AND NOT TO SCALE. THEY ARE SUBJECT TO ERRORS AND INACCURACIES AND NO LIABILITY WILL BE ACCEPTED. INTERESTED PARTIES SHOULD MAKE THEIR OWN ENQUIRIES.

All information contained therein is gathered from relevant third parties sources.  
We cannot guarantee or give any warranty about the information provided.  
Interested parties must rely solely on their own enquiries.