

7/3 Loftus Street, Ashfield

## Sold by LJ Hooker Ashfield | Inner West

Perfectly positioned next to the lush open spaces of Ashfield Park, this renovated townhouse offers a lifestyle of convenience and comfort. Enjoy the best of both worlds with leafy parklands at your doorstep, while being just a short stroll to Ashfield Station, Ashfield Mall, local schools, and a variety of cafes and restaurants.

### Property Features:

- Two spacious bedrooms plus a versatile study or third bedroom
- Renovated interiors across two levels
- Stylish modern bathroom
- Double lock-up garage with internal access
- Private courtyard, ideal for outdoor entertaining
- Open plan living and dining areas filled with natural light
- Internal laundry plus W/C

**DISCLAIMER:** This advertisement contains information provided by third parties. While all care is taken to ensure otherwise, LJ Hooker Ashfield does not make any representation as to the accuracy of the information contained in the advertisement, does not accept and responsibility or liability and recommends that any client make their own investigations and enquiries. All images are indicative of the property only.

All information contained therein is gathered from relevant third parties sources. We cannot guarantee or give any warranty about the information provided. Interested parties must rely solely on their own enquiries.

2 🏠 1 🚿 2 🚗

### FOR SALE

Sold by LJ Hooker Ashfield | Inner West

### AGENTS

Domenic Bucciarelli  
0411 199 466  
domenic@ljha.com.au

Dylan Bozicevic  
0449 787 123  
dylan@ljha.com.au

### AGENCY

LJ Hooker Ashfield  
(02) 9797 6044

 LJ Hooker

## MORE DETAILS

Property ID 1AC1F8B  
Property Type Townhouse

**Domenic Bucciarelli 0411 199 466**

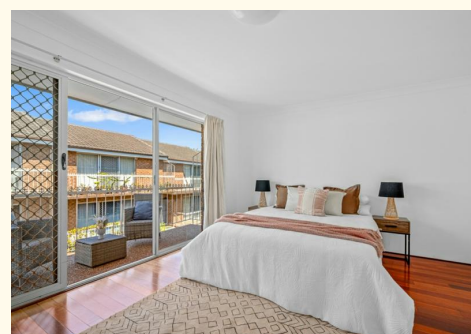
Principal-Licensee in Charge | [domenic@ljha.com.au](mailto:domenic@ljha.com.au)

**Dylan Bozicevic 0449 787 123**

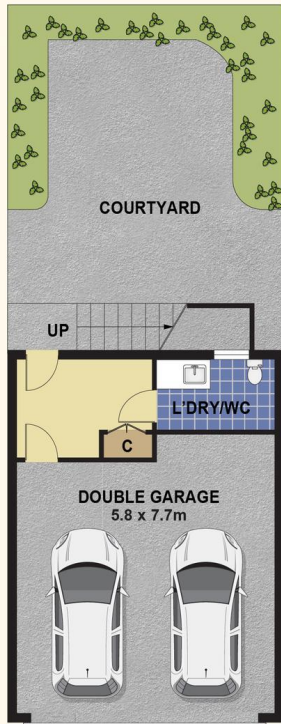
Sales Associate | [dylan@ljha.com.au](mailto:dylan@ljha.com.au)

**LJ Hooker Ashfield (02) 9797 6044**

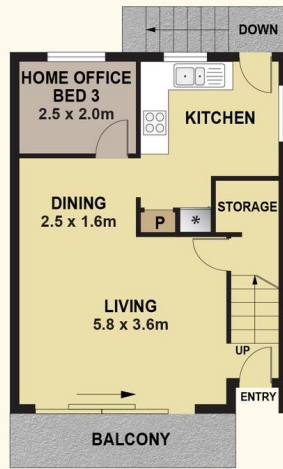
216 Liverpool Road, ASHFIELD NSW 2131  
[ashfield.ljhooker.com.au](http://ashfield.ljhooker.com.au) | [ashfield@ljha.com.au](mailto:ashfield@ljha.com.au)



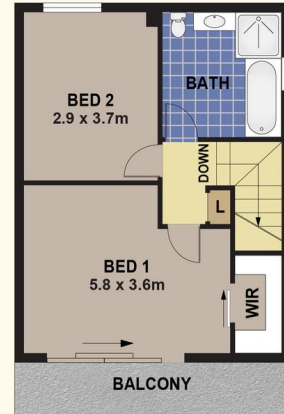
All information contained therein is gathered from relevant third parties sources.  
We cannot guarantee or give any warranty about the information provided.  
Interested parties must rely solely on their own enquiries.



GROUND FLOOR



FIRST FLOOR



SECOND FLOOR

## 13 LOFTUS STREET, ASHFIELD

### DISCLAIMER

ALL DIMENSIONS SHOWN ARE FOR MARKETING PURPOSES ONLY. ALL DIMENSIONS ARE APPROXIMATE AND NOT TO SCALE. THEY ARE SUBJECT TO ERRORS AND INACCURACIES AND NO LIABILITY WILL BE ACCEPTED. INTERESTED PARTIES SHOULD MAKE THEIR OWN ENQUIRIES.

All information contained therein is gathered from relevant third parties sources. We cannot guarantee or give any warranty about the information provided. Interested parties must rely solely on their own enquiries.