

Ashfield, 190 Holden Street

Elevated Family Home in Prime Location

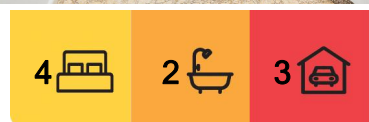
Nestled on a generous 670.3sqm parcel of land, this warm and family friendly home is move-in ready while also presenting the opportunity to add your own personal touch. This offering is in an outstanding hill top setting on the Ashbury border, being moments from Peace Park, bus services and within easy reach to excellent schools. It is an impeccably maintained brick home with a generous floor plan revealing 4 bedrooms, an elegant formal living space with a separate dining room which flow seemingly out to the undercover alfresco area.

Additional Features:

- Welcoming frontage with a porch leading to the home.
- Driveway access to rear garage.
- Expansive backyard offering potential for a pool, rumpus room, or granny flat.
- Additional storage area.
- Bedroom featuring a porch overlooking lush greenery.



Disclaimer: All information contained therein is gathered from relevant third parties sources. We cannot guarantee or give any warranty about the information provided. Interested parties must rely solely on their own enquiries.



For Sale
Auction

View
ljhooker.com.au/18B6F8B

Contact
Domenic Bucciarelli
0411 199 466
domenic@ljha.com.au

Mo Yassih
0473 172 464
mo@ljha.com.au

LJ Hooker Ashfield
(02) 9797 6044

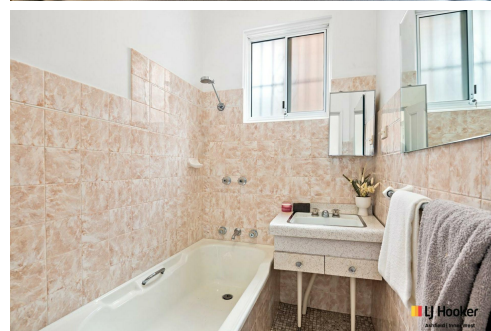
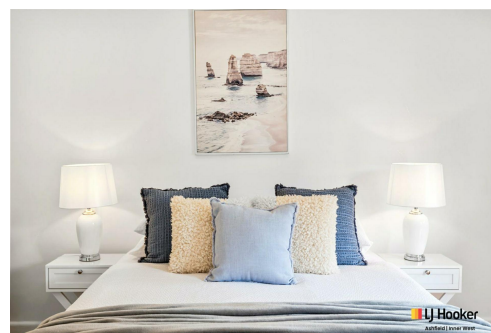
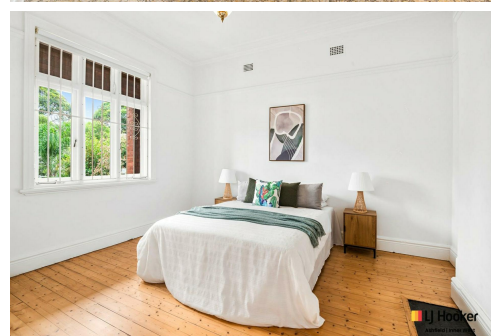
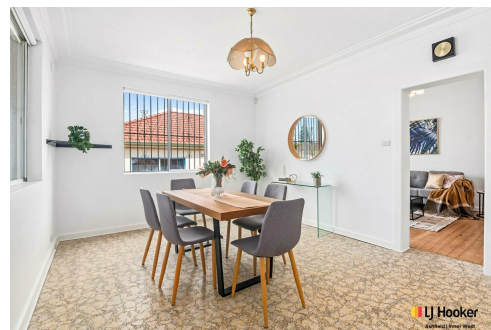
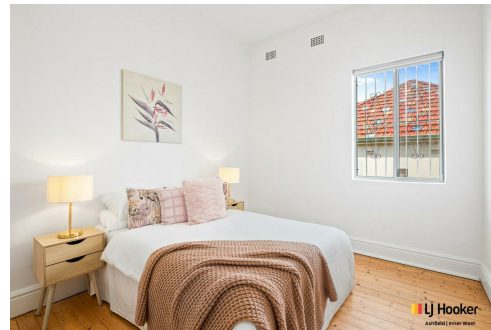
DISCLAIMER: This advertisement contains information provided by third parties. While all care is taken to ensure otherwise, LJ Hooker Ashfield does not make any representation as to the accuracy of the information contained in the advertisement, does not accept any responsibility or liability and recommends that any client make their own investigations and enquiries. All images are indicative of the property only.

More About this Property

Property ID	18B6F8B
Property Type	House
Land Area	670.3 m ²

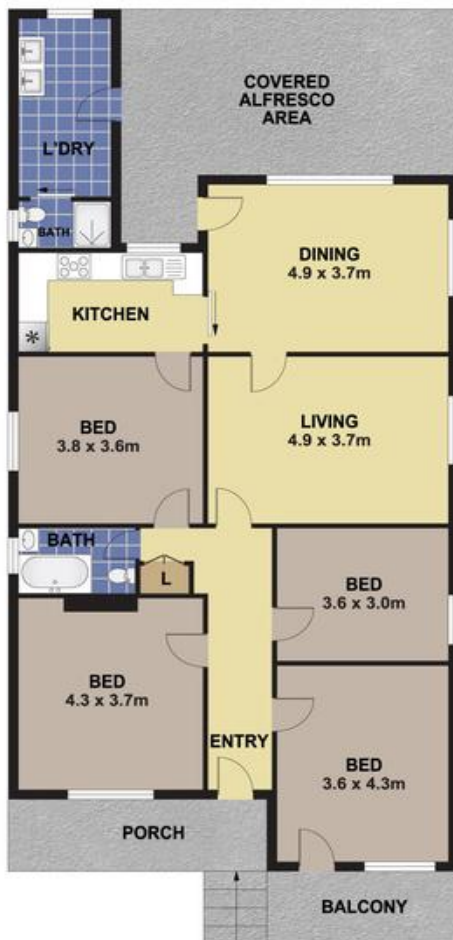
Domenic Bucciarelli 0411 199 466
Principal-Licensee in Charge | domenic@ljha.com.au
Mo Yassih 0473 172 464
Sales Associate | mo@ljha.com.au

LJ Hooker Ashfield (02) 9797 6044
216 Liverpool Road, ASHFIELD NSW 2131
ashfield.ljhooker.com.au | ashfield@ljha.com.au



Disclaimer: All information contained therein is gathered from relevant third parties sources. We cannot guarantee or give any warranty about the information provided. Interested parties must rely solely on their own enquiries.

LJ Hooker Ashfield
(02) 9797 6044



190 HOLDEN STREET, ASHFIELD

DISCLAIMER

PLANS SHOWN ARE FOR MARKETING PURPOSES ONLY. ALL DIMENSIONS ARE APPROXIMATE AND NOT TO SCALE. THEY ARE SUBJECT TO ERRORS AND INACCURACIES AND NO LIABILITY WILL BE ACCEPTED. INTERESTED PARTIES SHOULD MAKE THEIR OWN ENQUIRIES.



LJ Hooker Ashfield
(02) 9797 6044

Disclaimer: All information contained therein is gathered from relevant third parties sources. We cannot guarantee or give any warranty about the information provided. Interested parties must rely solely on their own enquiries.