



Sold



7/12 Julia Street, Ashfield

2 🏠 1 🚗 1 🚗

Oversized Top Floor Living in a Prime, Well-Maintained Setting

Positioned within a well-maintained building, this oversized top floor apartment offers a lifestyle of comfort and convenience in a highly sought-after location.

Enjoy easy access to local cafés, schools, shops, public transport and parklands, all while being tucked away in a quiet, established street. The combination of space, natural light and a prime setting makes this an ideal opportunity for both homeowners and investors alike.

Features include:

- Combined living and dining setting
- Recently updated with brand new flooring throughout
- Freshly painted interiors for a modern, move-in ready feel
- Two well-proportioned bedrooms, both with built-in robes
- Internal laundry for added convenience
- Lock-up garage providing secure parking and storage

DISCLAIMER: This advertisement contains information provided by third parties. While all care is taken to ensure otherwise, LJ Hooker Ashfield does not make any representation as to the accuracy of the information contained in the advertisement, does not accept and responsibility or liability and recommends that any client make their

FOR SALE
Auction

AGENTS

Domenic Bucciarelli
0411 199 466
domenic@ljha.com.au

Dylan Bozicevic
0449 787 123
dylan@ljha.com.au

AGENCY

LJ Hooker Ashfield
(02) 9797 6044

All information contained therein is gathered from relevant third parties sources. We cannot guarantee or give any warranty about the information provided. Interested parties must rely solely on their own enquiries.

 **LJ Hooker**

own investigations and enquiries. All images are indicative of the property only.

MORE DETAILS

Property ID 1AP9F8B
Property Type Apartment

Domenic Bucciarelli 0411 199 466

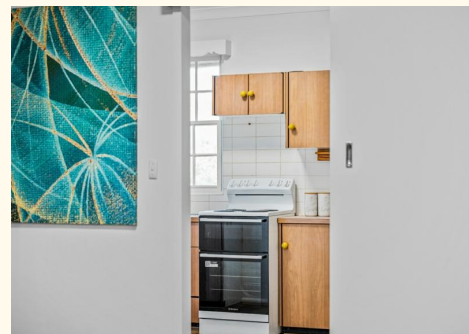
Principal-Licensee in Charge | domenic@ljha.com.au

Dylan Bozicevic 0449 787 123

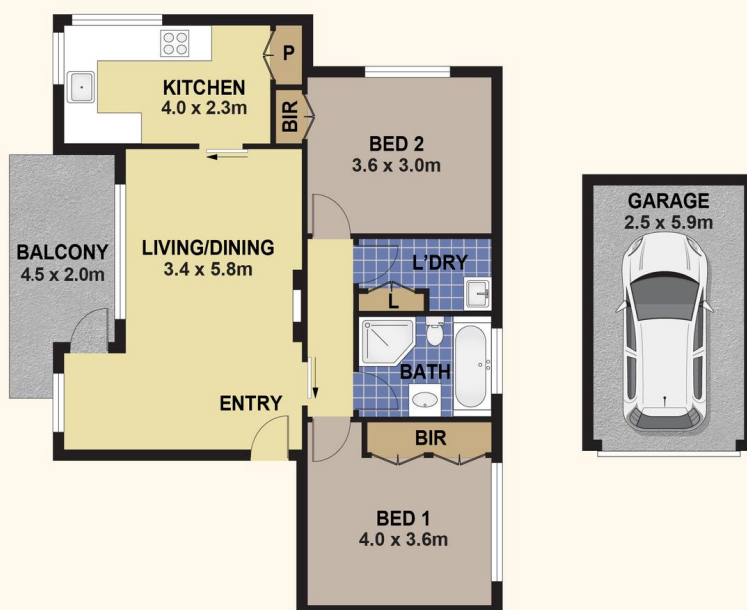
Sales Associate | dylan@ljha.com.au

LJ Hooker Ashfield (02) 9797 6044

216 Liverpool Road, ASHFIELD NSW 2131
ashfield.ljhooker.com.au | ashfield@ljha.com.au



All information contained therein is gathered from relevant third parties sources.
We cannot guarantee or give any warranty about the information provided.
Interested parties must rely solely on their own enquiries.



7/12 JULIA STREET, ASHFIELD

DISCLAIMER

PLANS SHOWN ARE FOR MARKETING PURPOSES ONLY. ALL DIMENSIONS ARE APPROXIMATE AND NOT TO SCALE. THEY ARE SUBJECT TO ERRORS AND INACCURACIES AND NO LIABILITY WILL BE ACCEPTED. INTERESTED PARTIES SHOULD MAKE THEIR OWN ENQUIRIES.