



26/58 Orpington Street, Ashfield

Sold by LJ Hooker Ashfield | Inner West

Tucked away in a peaceful parkside pocket of Ashfield, this top-floor apartment offers the perfect blend of convenience and tranquillity. Surrounded by lush greenery and just moments from Ashfield Mall, the station, and a vibrant dining scene, it delivers a lifestyle of comfort and ease in one of the Inner West's most connected locations.

Features:

- Two well-sized bedrooms
- Updated kitchen with modern finishes
- Light-filled open living and dining area
- Top-floor position in a well-maintained block
- Car port
- Internal laundry space

DISCLAIMER: This advertisement contains information provided by third parties. While all care is taken to ensure otherwise, LJ Hooker Ashfield does not make any representation as to the accuracy of the information contained in the advertisement, does not accept and responsibility or liability and recommends that any client make their own investigations and enquiries. All images are indicative of the property only.

All information contained therein is gathered from relevant third parties sources. We cannot guarantee or give any warranty about the information provided. Interested parties must rely solely on their own enquiries.

2 🏠 1 🚗 1 🚗

FOR SALE

Sold by LJ Hooker Ashfield | Inner West

AGENTS

Domenic Bucciarelli
0411 199 466
domenic@ljha.com.au

Dylan Bozicevic
0449 787 123
dylan@ljha.com.au

AGENCY

LJ Hooker Ashfield
(02) 9797 6044

 LJ Hooker

MORE DETAILS

Property ID 1AEKF8B
Property Type Apartment

Domenic Bucciarelli 0411 199 466

Principal-Licensee in Charge | domenic@ljha.com.au

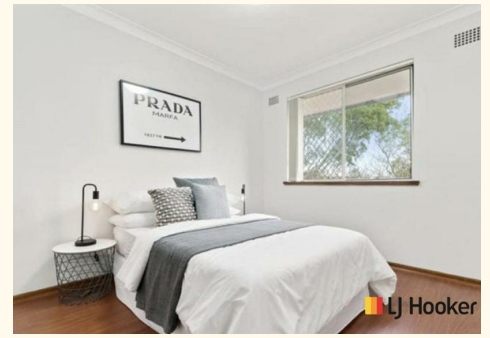
Dylan Bozicevic 0449 787 123

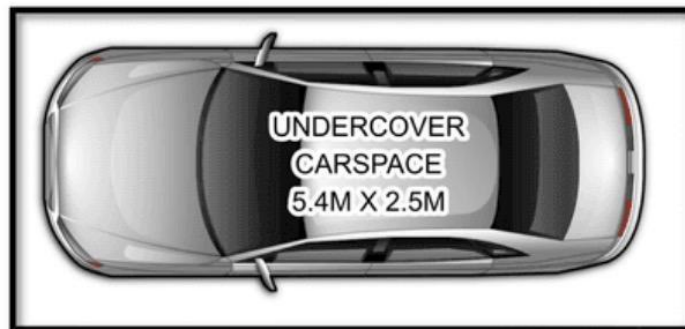
Sales Associate | dylan@ljha.com.au

LJ Hooker Ashfield (02) 9797 6044

216 Liverpool Road, ASHFIELD NSW 2131

ashfield.ljhooker.com.au | ashfield@ljha.com.au





26/58 Orpington Street, Ashfield



All information contained therein is gathered from relevant third parties sources.
We cannot guarantee or give any warranty about the information provided.
Interested parties must rely solely on their own enquiries.

