



Armadale, 11 Townsend Street

1ST TIME TO THE MARKET - POTENTIAL RETAIN AND BUILD WITH STREET FRONT BLOCK

Original 1972 built 3 x1 home on magnificent block of land "852m2' with '29.17 m' frontage zoned for retain and build option with appropriate council approval.

The home is a much loved and well maintained brick and tile building. Extensive gardens, opposite parklands and very secure.

A workshop shed out the back, electric storage HWS and carport patio complete a potential bonanza for the enterprising homebuyer, retirement investment or renovator/building capitalize.

For further information contact John Rechichi – 0418 948 714.

DISCLAIMER: The information contained herein has been supplied to us and we have no

3 1 1

For Sale
FROM \$579,000

View
By Appointment

Contact
John Rechichi
0418 948 714
john.rechichi@ljhooker.com.au



LJ Hooker Harrisdale
(08) 9398 4000

Disclaimer: All information contained therein is gathered from relevant third parties sources. We cannot guarantee or give any warranty about the information provided. Interested parties must rely solely on their own enquiries.

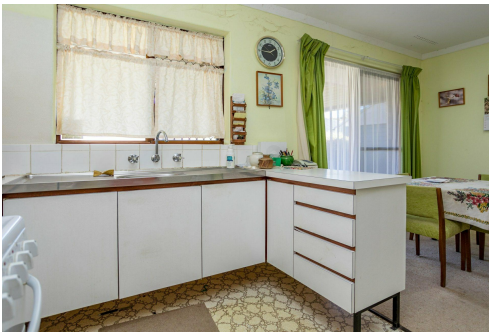
reason to doubt its accuracy, however we cannot guarantee it. Accordingly, all interested parties should make their own enquires to verify the information.

More About this Property

Property ID	28VJ00
Property Type	House
Land Area	852 m2

John Rechichi 0418 948 714
Director | john.rechichi@ljhooker.com.au

LJ Hooker Harrisdale (08) 9398 4000
21 Wright Road, HARRISDALE WA 6112
harrisdale.ljhooker.com.au | harrisdale@ljhooker.com.au



Disclaimer: All information contained therein is gathered from relevant third parties sources. We cannot guarantee or give any warranty about the information provided. Interested parties must rely solely on their own enquiries.

LJ Hooker Harrisdale
(08) 9398 4000