



36 Tmara Mara Circuit, Araluen

Exclusive Position

Surrounded by a beautiful bush on one side and a recreational park on the other life will take on a fresh new meaning.


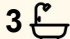
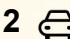
With three generous-sized bedrooms, a separate study and a fully self-contained one-bedroom studio there will be room for all plus more.

The studio is at the front of the home and has its own entrance. The studio bedroom has lovely views over the park, modern window fixtures, a walk-in robe and an en-suite bathroom. Both the kitchenette and living space are combined.

All other bedrooms have built-in robes except the main that has a walk-through robe and an en-suite bathroom.

Expansive glass windows and doors surround the open plan living areas that overlook the expansive outdoor deck, architecturally designed verandah and in-ground plunge pool. The well-equipped gas kitchen is adjacent to the dining and living areas.

Reverse cycle air conditioning is ducted throughout and the extra lockup storage under the home will come in handy.

5  3  2 

FOR SALE

Offers Over \$675,000

VIEW

By Appointment

AGENTS

Gail Tuxworth

0418 897 009

gtuxworth@ljhalicesprings.com.au

AGENCY

LJ Hooker Alice Springs

(08) 8950 6333

All information contained therein is gathered from relevant third parties sources. We cannot guarantee or give any warranty about the information provided. Interested parties must rely solely on their own enquiries.



Venture outside and explore the bush following the many tracks that traverse the surrounding hills.

Council Rates: \$2,136.56 p.a.

Rental Return: \$725 p.w.

- Backing onto the bush and recreational park
- Generous family home + self/cont studio
- Modern gas kitchen, open plan living
- Architecturally designed verandah and deck
- Under home storage, in-ground pool

MORE DETAILS

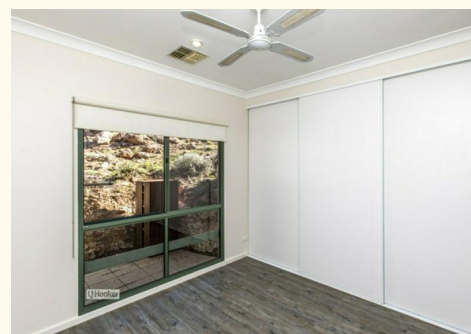
Property ID	1W3DFD5
Property Type	House
Land Area	811 m2
Including	Ensuite
	Air Conditioning
	Ducted Cooling
	Ducted Heating
	Toilets (3)
	Pool
	Spa
	Balcony
	Deck
	Dishwasher
	Outdoor Entertaining
	Floorboards
	Built-in-Robes
	Fully Fenced
	Internal laundry and walk in robe

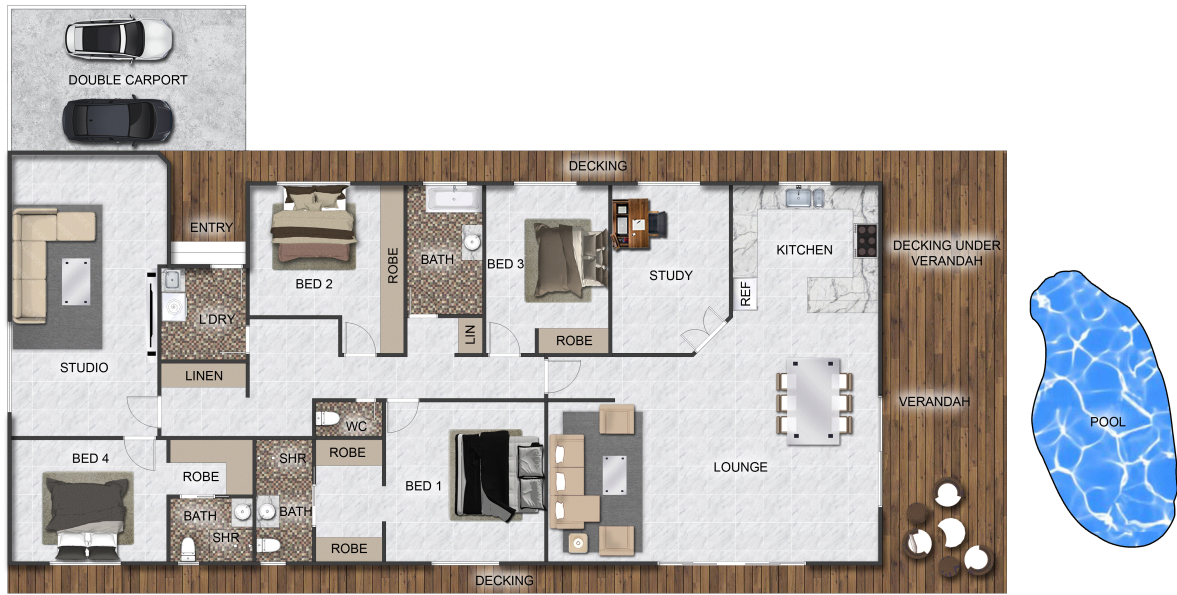
Gail Tuxworth 0418 897 009

Sales Representative | gtuxworth@ljhalicesprings.com.au

LJ Hooker Alice Springs (08) 8950 6333

Suite 2 52 Hartley Street, ALICE SPRINGS NT 0870
alicesprings.ljhooker.com.au | office@ljhalicesprings.com.au





FLOOR PLAN

This floor plan including furniture, fixture measurements and dimensions are approximate and for illustrative purposes only. Boxbrownie.com gives no guarantee, warranty or representation as to the accuracy and layout. All enquiries must be directed to the agent, vendor or party representing this floor plan.

36 Tmara Mara Circuit, ARALUEN