

19 Fardon Street, Annandale

STUNNING HOME IN SOUGHT AFTER ANNANDALE

Positioned in a quiet pocket of Annandale, 19 Fardon Street presents an exceptional opportunity to secure a beautifully maintained family home with all the hard work already done. Immaculately presented and thoughtfully updated, this property offers relaxed living with a focus on comfort and functionality.

Features include:

- Three well-sized bedrooms
- Stylish, updated bathroom
- Two-bay carport providing ample covered parking
- Modern, near-new kitchen with quality finishes
- Light-filled open-plan kitchen and dining area
- Sparkling in-ground pool, perfect for entertaining
- Generous backyard with plenty of lawn for kids and pets
- Large shed at the rear, ideal for storage or a workshop
- Exceptionally neat and tidy throughout - simply move in and enjoy

Whether you're a first home buyer, downsizer or investor, this home delivers easy living in a highly sought-after location. With nothing left to do, all that's missing is your personal touch to make it your own.

All information contained therein is gathered from relevant third parties sources. We cannot guarantee or give any warranty about the information provided. Interested parties must rely solely on their own enquiries.

3 1 2

FOR SALE
High \$600,000's

VIEW
By Appointment

AGENTS
Suzanne Coverlid
0439 032 210
suzanne.coverlid@ljhooker.com.au

AGENCY
LJ Hooker Townsville
07 44262125

LJ Hooker

MORE DETAILS

Property ID 2M4HWK
Property Type House
Land Area 607 m²

Suzanne Coverlid 0439 032 210

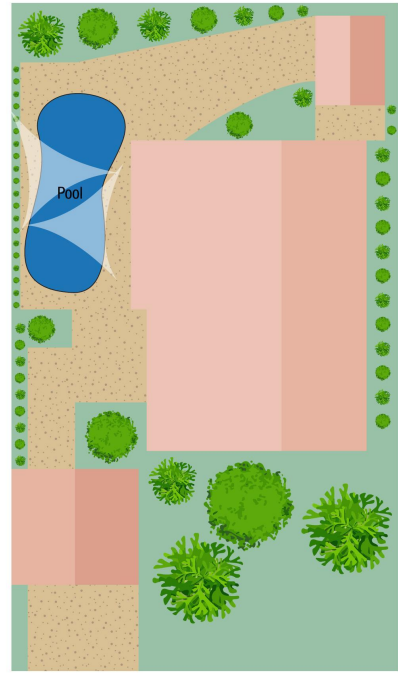
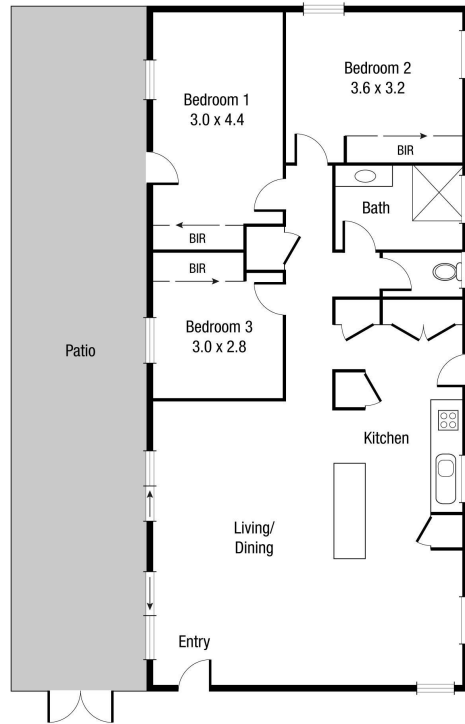
Sales & Marketing Consultant | suzanne.coverlid@ljhooker.com.au

LJ Hooker Townsville 07 44262125

Shop 18/39 Eyre Street, NORTH WARD QLD 4810
townsville.ljhooker.com.au | townsville@ljhooker.com.au



All information contained therein is gathered from relevant third parties sources.
We cannot guarantee or give any warranty about the information provided.
Interested parties must rely solely on their own enquiries.



Scale in metres. Indicative only. Dimensions are approximate. All information contained herein is gathered from sources we believe to be reliable. However we cannot guarantee its accuracy and interested persons should rely on their own enquiries.

TOTAL AREA : 144.4 sq.m

19 Fardon St, Annandale