



5 Teakle Court, Angle Vale

Your Forever Home Is Here

Tucked away in a quiet and private family-friendly cul-de-sac with no through traffic, this beautifully presented home offers the perfect combination of modern comfort, generous living and room for the whole family to grow.

Positioned on an impressive 1,927m² allotment in one of Angle Vale's most sought-after pockets, 5 Teakle Court has been thoughtfully designed for family living, offering spacious interiors, multiple living zones and an outdoor setting that invites you to slow down and enjoy the lifestyle on offer.

Whether it's children playing safely in the backyard, weekend gatherings with family and friends, or simply enjoying the peace and privacy that comes with a court location, this is a home where lasting memories are made.

From the moment you arrive, you'll appreciate the sense of space, modern finishes and quality throughout. Enjoy the lifestyle that Angle Vale is renowned for, with local favourites including Virgara Wines and Sneaky's Restaurant just moments away. Families will also appreciate the convenience of nearby schooling options including Trinity College (Gawler River Campus), Angle Vale Primary School, childcare centres, sporting clubs and recreational facilities.

4  2  2 

FOR SALE

Best Offers by 22/06/2026 at 10.00am

VIEW

By Appointment

AGENTS

Maigen Norman
0418 557 597
maigenn@ljhsales.com.au

Matthew Nudo
0497 804 034
matthewn@ljhsales.com.au

AGENCY

LJ Hooker Property Specialists Gawler |
Barossa
(08) 8522 3311

All information contained therein is gathered from relevant third parties sources.
We cannot guarantee or give any warranty about the information provided.
Interested parties must rely solely on their own enquiries.

 **LJ Hooker**

Features:

- Master suite with walk-in robe and ensuite.
- Bedrooms 2 & 3 with built-in robes.
- Study nook.
- Spacious open plan living and dining area.
- Kitchen with window splashback, stainless steel appliances and butler's pantry.
- Undercover alfresco entertaining area.
- Evaporative cooling.
- Split System in main bedroom and living area.
- Roller shutters for added privacy and security.
- Solar system.
- Instant gas hot water system.
- 2x rainwater tanks.
- Large shed.
- Double garage with drive-through rear access.
- 2.5m ceilings throughout.

CT / 6161/19
Year Built / 2016
Land size / 1927m2 (approx.)
Internal Living / 202m2 (approx.)

For any further information, or to make a time to inspect, please contact Maigen Norman on 0418 557 597.

All information provided has been obtained from sources we believe to be accurate, however, we cannot guarantee the information is accurate and we accept no liability for any errors or omissions (including but not limited to a property's land size, floor plans and size, building age and condition). Interested parties should make their own enquiries and obtain their own legal and financial advice. Should this property be scheduled for auction, the Vendor's Statement may be inspected at our LJ Hooker Property Specialists Real Estate office for 3 consecutive business days immediately preceding the auction and at the auction for 30 minutes before it starts. RLA 343733

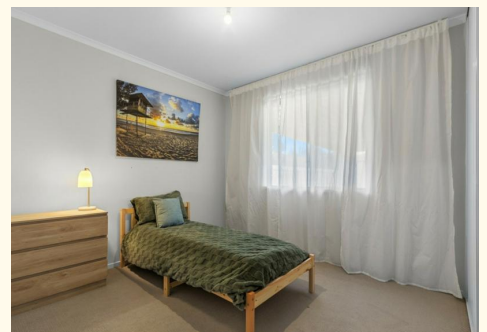
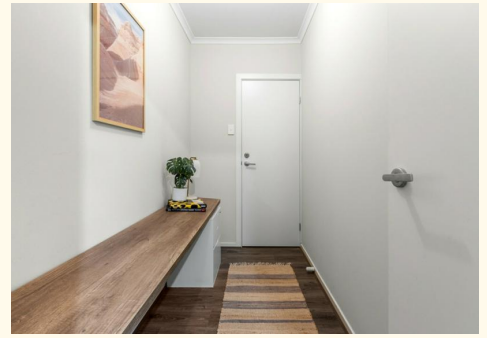
MORE DETAILS

Property ID	1W3WG54
Property Type	House
House Size	202 m2
Land Area	1927 m2
Including	Ensuite Air Conditioning Dishwasher Outdoor Entertaining Floorboards Built-in-Robes Secure Parking Remote Garage Solar Panels Water Tank

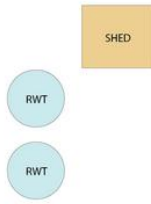
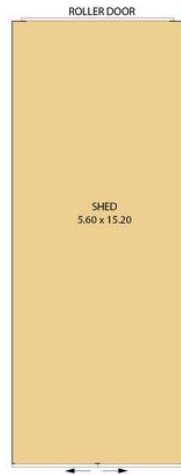
Maigen Norman 0418 557 597
Sales Specialist | maigenn@ljhsales.com.au
Matthew Nudo 0497 804 034
Sales Specialist | matthewn@ljhsales.com.au

LJ Hooker Property Specialists Gawler | Barossa (08) 8522 3311
26 Adelaide Road, GAWLER SA 5118
gawlerbarossa.ljhooker.com.au | gawler@ljhsupport.com.au

All information contained therein is gathered from relevant third parties sources. We cannot guarantee or give any warranty about the information provided. Interested parties must rely solely on their own enquiries.



5 Teakle Court,
ANGLE VALE



Living:	178.13SQM
Verandah:	61.04SQM
Garage/Shed:	119.34SQM
TOTAL:	358.51SQM

This Drawing is for illustration purposes only. All measurements are internal and approximate. Details intended to be relied upon should be independently verified.

All information contained therein is gathered from relevant third parties sources. We cannot guarantee or give any warranty about the information provided. Interested parties must rely solely on their own enquiries.