



Angle Vale, 29 Woodbridge Drive

Modern Family Home in Prime Location Opposite Scenic Reserve

Situated directly opposite a picturesque reserve featuring a tranquil pond and a multipurpose sports area, this beautifully presented four-bedroom home offers the perfect blend of comfort, style, and convenience. Built in 2018 and set on approximately 666 square metres (apprx.), it's nestled among other high-quality residences in a desirable neighbourhood.

Simply move in and enjoy —there's nothing left to do. This thoughtfully designed home includes a range of impressive features:

- Soaring high ceilings throughout, enhancing the sense of space and light
- A wide entryway leading to a formal lounge, perfect for entertaining
- Generously sized master bedroom complete with a walk-in robe and private ensuite
- Expansive open-plan living area featuring a stunning kitchen with modern appliances,



Disclaimer: All information contained therein is gathered from relevant third parties sources. We cannot guarantee or give any warranty about the information provided. Interested parties must rely solely on their own enquiries.



For Sale
Please Call

View
ljhooker.com.au/6787FDC

Contact
Gareth Dickins
0417883329
gareth.dickins@ljhces.com.au

LJ Hooker Craigmore | Elizabeth | Salisbury
(08) 8255 9555

ample cabinetry, a huge walk-in pantry, and a clear view of the spacious family and dining zones

- Well-equipped laundry, ideal for a busy family lifestyle
- Bedroom 2 includes a walk-through robe and its own private ensuite
- Bedroom 3 boasts a walk-in robe, located near Bedroom 4, and is serviced by a third well-appointed bathroom
- Underfloor heating in the main living areas and ducted reverse-cycle heating and cooling ensure year-round comfort
- Quality finishes throughout, including elegant floor tiles, downlights, and stylish window furnishings
- Large solar system for energy efficiency
- Double garage under the main roof with auto tilt-door and direct internal access for added security
- Expansive outdoor entertaining area with a large verandah and adjoining alfresco space
- Manicured backyard with a 4m x 6m workshop featuring a roller door, perfect for additional storage or a home project space

Ideally located close to local shops, schools, parks, and public transport, this stunning home offers an exceptional lifestyle opportunity in a welcoming, family-friendly community. Don't miss your chance to make this beautiful property your forever home.

Disclaimer:

We have in preparing this document used our best endeavours to ensure the information contained is true and accurate, but accept no responsibility and disclaim all liability in respect to any errors, omissions, inaccuracies or misstatements contained. Prospective purchasers should make their own enquiries to verify the information contained in this document.

RLA155355

More About this Property

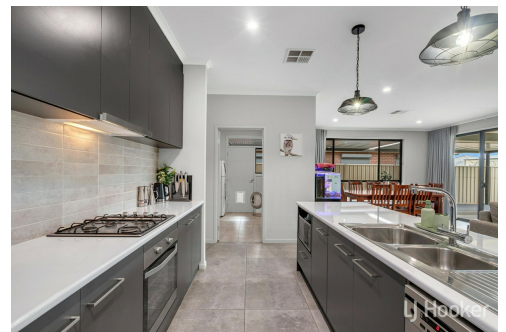
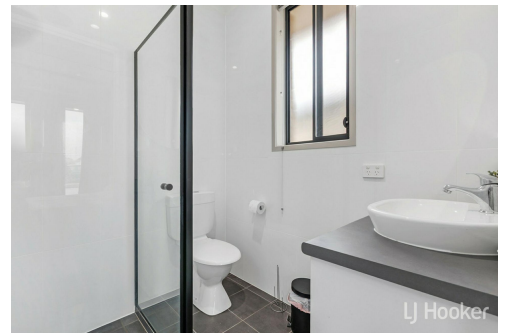
Property ID	6787FDC
Property Type	House
Land Area	666 m2

Gareth Dickins 0417883329

Sales Representative | gareth.dickins@ljhces.com.au

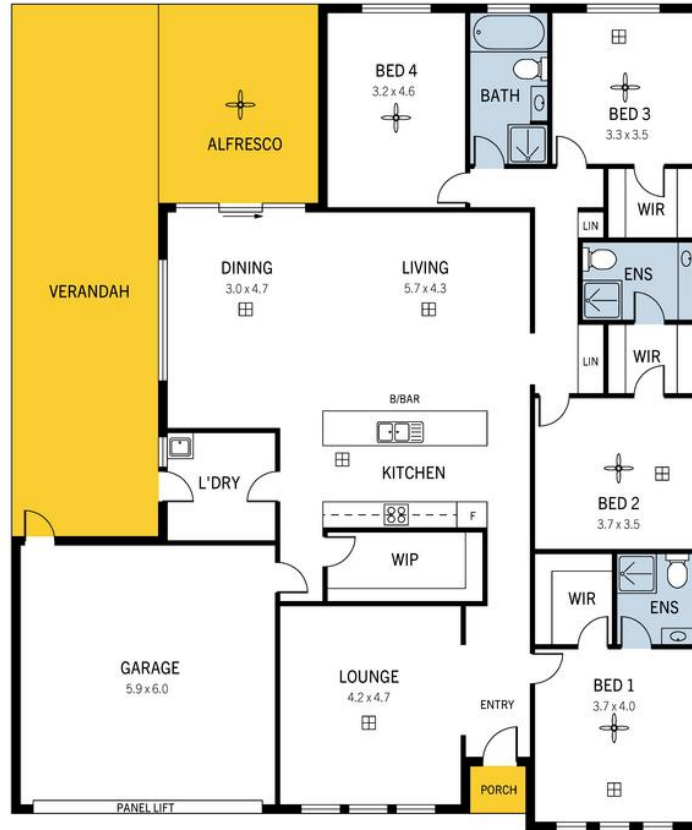
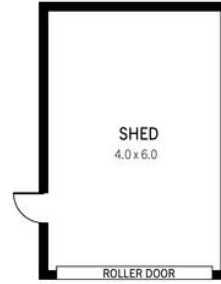
LJ Hooker Craigmore | Elizabeth | Salisbury (08) 8255 9555

Shop 17, Craigmore Village, Yorktown Road, CRAIGMORE SA 5114
craigmoreelizabeth.ljhooker.com.au | Office@ljhces.com.au



Disclaimer: All information contained therein is gathered from relevant third parties sources. We cannot guarantee or give any warranty about the information provided. Interested parties must rely solely on their own enquiries.

**LJ Hooker Craigmore | Elizabeth |
Salisbury
(08) 8255 9555**



29 Woodbridge Drive, Angle Vale

DISCLAIMER: Floorplan and area calculation are approximate and for illustration purposes only.
Produced by **Property Portraits**

Interior	197m ²	317m² TOTAL
Garage	35m ²	
Exterior	61m ²	
Shed	24m ²	



LJ Hooker Craigmore | Elizabeth |
Salisbury
(08) 8255 9555

Disclaimer: All information contained therein is gathered from relevant third parties sources.
We cannot guarantee or give any warranty about the information provided. Interested parties must rely solely on their own enquiries.