

Andrews Farm, 34 Everest Avenue

Your Perfect Hideaway!



This beautifully presented four-bedroom residence, located in a highly sought-after area, offers the perfect blend of comfort, style, and convenience. Previously leased to Defence Housing, the home is now ready to welcome its next family.

Freshly painted and featuring new carpets in the lounge and bedrooms, along with tiled flooring in high-traffic areas and the rear living spaces, this home is move-in ready. It boasts a spacious layout designed for family living, including a large lounge with a vaulted ceiling at the front and an open-plan meals and family area at the rear.

The well-appointed kitchen is a chef's delight, offering ample storage, generous bench space with a raised breakfast bar, a stainless steel wall oven, gas cooktop, and rangehood-perfect for preparing meals and entertaining.

The master bedroom, situated at the front of the home, features a bay window, an ensuite,

For Sale
UNDER CONTRACT BY COREY VOSS

View
ljhooker.com.au/66G6FDC

Contact
Corey Voss
0412 262 180
corey.voss@ljhces.com.au



**LJ Hooker Craigmore | Elizabeth |
Salisbury
(08) 8255 9555**

Disclaimer: All information contained therein is gathered from relevant third parties sources. We cannot guarantee or give any warranty about the information provided. Interested parties must rely solely on their own enquiries.

and a walk-in robe. Bedroom two also includes a walk-in robe, while bedrooms three and four are fitted with built-in robes, ensuring plenty of storage for the entire family. Year-round comfort is assured with ducted heating and cooling, and the home is equipped with security doors and window screens for added peace of mind.

The exterior of the property is equally impressive, offering ample parking with a drive-through double garage (featuring two roller doors and a manual rear roller door). An alfresco area under the main roof provides the perfect space for outdoor entertaining, all set on a generous 575m² (approx.) allotment surrounded by well-maintained gardens.

Conveniently located near St Columba College, public transport options, and just a short drive to Elizabeth City Shopping Centre, this property is ideally situated for families.

Don't miss out - homes of this calibre in such a prime location are in high demand. Act quickly to make this property yours!

Disclaimer:

We have in preparing this document used our best endeavours to ensure the information contained is true and accurate, but accept no responsibility and disclaim all liability in respect to any errors, omissions, inaccuracies or misstatements contained. Prospective purchasers should make their own enquiries to verify the information contained in this document.

RLA155355

More About this Property

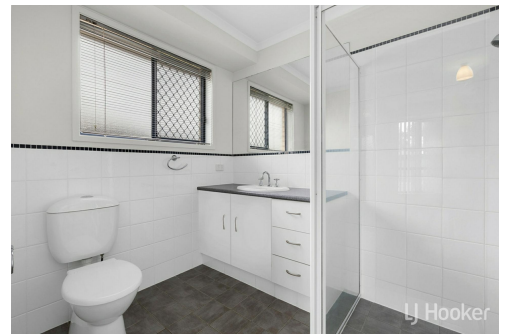
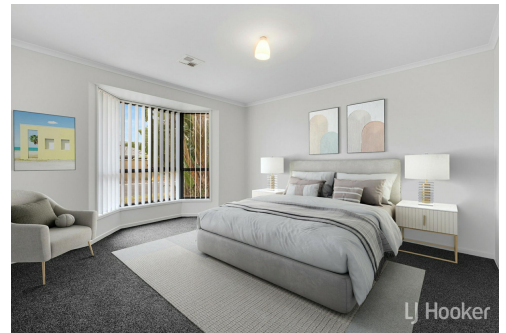
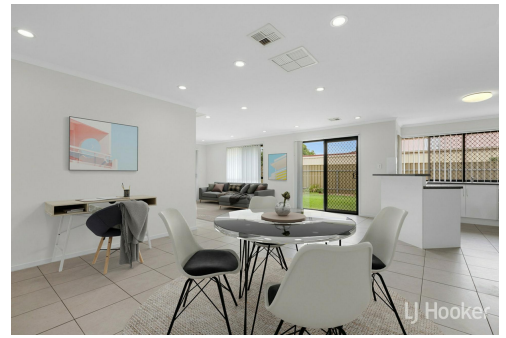
Property ID	66G6FDC
Property Type	House
House Size	228 m ²
Land Area	575 m ²

Corey Voss 0412 262 180

Licensee & Senior Sales Representative | corey.voss@ljhces.com.au

LJ Hooker Craigmore | Elizabeth | Salisbury (08) 8255 9555

Shop 17, Craigmore Village, Yorktown Road, CRAIGMORE SA 5114
craigmoreelizabeth.ljhooker.com.au | Office@ljhces.com.au



Disclaimer: All information contained therein is gathered from relevant third parties sources. We cannot guarantee or give any warranty about the information provided. Interested parties must rely solely on their own enquiries.

**LJ Hooker Craigmore | Elizabeth |
Salisbury
(08) 8255 9555**



34 Everest Avenue, Andrews Farm

DISCLAIMER: Floorplan and area calculation are approximate and for illustration purposes only.
Produced by Property Portraits

Interior	185m ²	245m² TOTAL
Garage	34m ²	
Alfresco	17m ²	
Porch	09m ²	