

Andrews Farm, 214 President Avenue

Stylish Family Home with Modern Touches

Introducing this stylish four-bedroom home, proudly presented by Andrew Rose from LJ Hooker. This property, built in 2019, offers a blend of contemporary design and family-friendly features, nestled within a flourishing community of modern homes.

Upon entry, you'll find a master suite featuring a private ensuite and a generous walk-in robe, providing a perfect sanctuary. Each of the additional bedrooms includes built-in robes, ensuring ample storage and space for everyone.

The open-plan layout creates a welcoming space that effortlessly combines the kitchen, dining, and living areas. The kitchen is equipped with abundant cabinetry, a sleek gas cooktop, electric oven, dishwasher, and a practical breakfast bar that seamlessly integrates with the dining and living spaces, making it ideal for gatherings and everyday meals.

4 2 2

For Sale
UNDER CONTRACT BY ANDREW ROSE

View
ljhooker.com.au/66D7FDC

Contact
Andrew Rose
0421 988 597
andrew.rose@ljhcs.com.au



Disclaimer: All information contained therein is gathered from relevant third parties sources. We cannot guarantee or give any warranty about the information provided. Interested parties must rely solely on their own enquiries.

LJ Hooker Craigmore | Elizabeth | Salisbury
(08) 8255 9555

Outside, an alfresco area under the main roof invites you to relax and enjoy a low-maintenance yard, ready to be transformed into your personal retreat.

Key Features:

- Ducted Heating and Cooling
- Secure double garage
- Built-in robes across all bedrooms
- Modern 2019 build
- Alfresco area
- Stone Bench Tops

Property Details:

- CT/ 6215/797
- Council / Playford
- Year Built / 2021
- Land Size / 375sqm (approx.)
- Easements / NIL
- Current rental assessment / \$520-\$580 per week

This home is currently tenanted until October 2025 at \$520 per week

Situated in a great neighborhood, residents can enjoy the convenience of a nearby dog park and proximity to the Eyre Shopping Centre, making daily errands a breeze. For those with a city commute in mind, quick access to the Northern Expressway ensures a seamless journey.

Contact Andrew Rose Today!

Disclaimer:

We have in preparing this document used our best endeavours to ensure the information contained is true and accurate, but accept no responsibility and disclaim all liability in respect to any errors, omissions, inaccuracies or misstatements contained. Prospective purchasers should make their own enquiries to verify the information contained in this document.

RLA155355

More About this Property

Property ID	66D7FDC
Property Type	House
Land Area	375 m²

Andrew Rose 0421 988 597

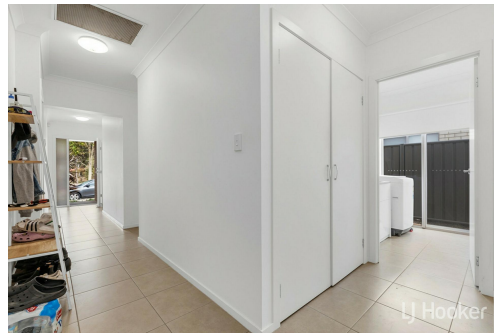
Senior Sales Representative | andrew.rose@ljhces.com.au

LJ Hooker Craigmore | Elizabeth | Salisbury (08) 8255 9555

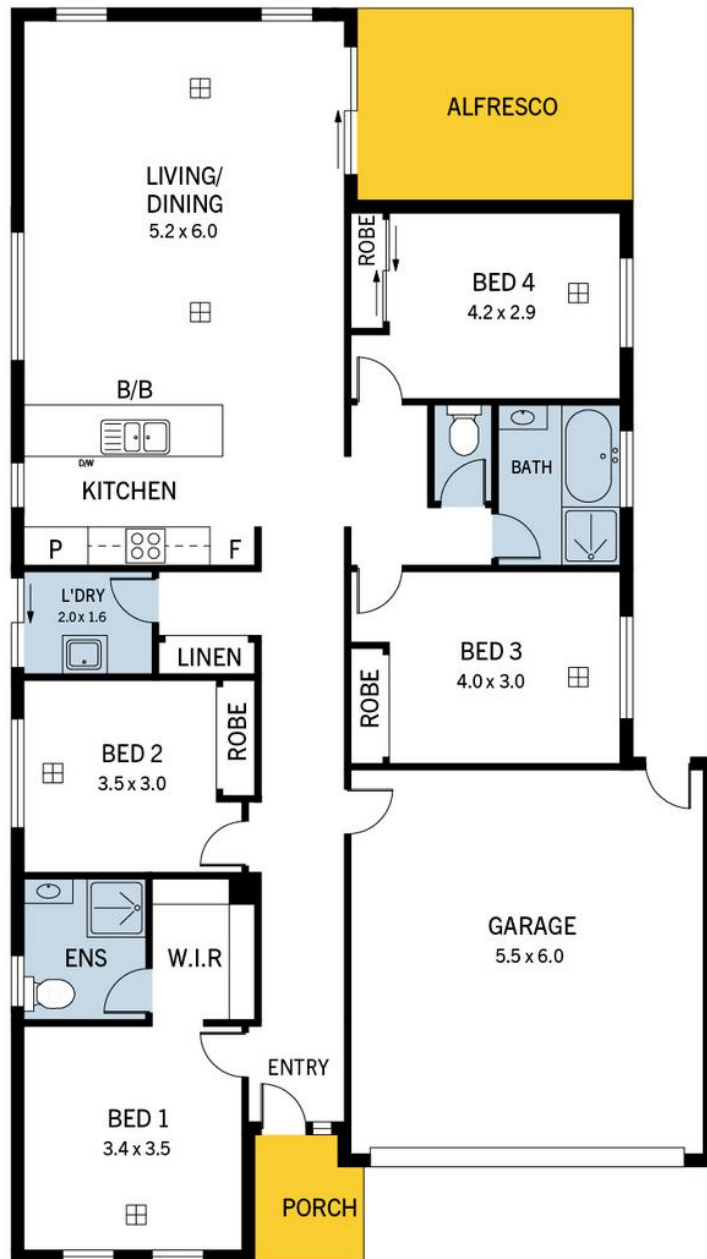
Shop 17, Craigmore Village, Yorktown Road, CRAIGMORE SA 5114
craigmoreelizabeth.ljhooker.com.au | Office@ljhces.com.au



Disclaimer: All information contained therein is gathered from relevant third parties sources. We cannot guarantee or give any warranty about the information provided. Interested parties must rely solely on their own enquiries.



LJ Hooker Craigmore | Elizabeth | Salisbury (08) 8255 9555



214 President Avenue, Andrews Farm

DISCLAIMER: Floorplan and area calculation are approximate and for illustration purposes only.
Produced by Property Portraits

Interior	130m ²	173m²
Exterior	13m ²	
Studio	33m ²	
		TOTAL