

Andrews Farm, 15 Bracken Avenue

A Quality 2019 Built 5 Bedroom Family Home with so many Extras!

*** EXTRAS INCLUDE ***

5 Bedrooms + 2 Bathrooms + 2 Living Areas + Outdoor Alfresco + Ducted Reverse Cycle Air Con + SOLAR PANELS + 13.5kW TESLA BATTERY + Security Shutters + Artificial Lawns

Built in 2019, this stunning 5-bedroom family home offers an abundance of space for the largest of families while also delivering a low-maintenance lifestyle for all. Boasting two living spaces, the first being an open plan family and meals area along with a modern large family kitchen which also extends outdoors to the underroof tiled alfresco entertaining and a second lounge or possible home theatre room. Set amongst other quality homes in this stylish new estate with easy access to the Northern Expressway making commuting to Adelaide CBD a breeze!



For Sale
UNDER CONTRACT BY SHAUN ROBERTS

View
ljhooker.com.au/2AUUGJU

Contact
Shaun Roberts
0435 367 534
shaunr@ljhsales.com.au



Disclaimer: All information contained therein is gathered from relevant third parties sources. We cannot guarantee or give any warranty about the information provided. Interested parties must rely solely on their own enquiries.

**LJ Hooker Greenwith | Golden Grove
| Mawson Lakes | Modbury
(08) 8289 6660**

Features include:

- 5 Bedrooms, master with a walk-in robe to ensuite bathroom with floor-to-ceiling tiles
- Bedroom 2 with walk-in robe, bedroom 3 and 4 with built-in robes
- Open-plan family and meals
- Modern family kitchen with gas cooktop, oven and dishwasher, walk-in pantry
- Formal lounge or possible home theatre room
- Ducted reverse cycle air conditioning with app control
- Tiled floors with LED lighting
- 2.7m ceilings
- Electric security roller shutters, security screen doors and x7 security cameras via app
- Tiled alfresco entertaining perfect for a BBQ with friends
- Artificial lawn front and rear yards make the home super low-maintenance
- Double auto garage with internal access
- Three points of control for instant gas hot water
- 6.6kW Solar and 13.5kW Tesla battery to save you \$\$ on your electricity bills

What a way to finish the year and see your family move in and enjoy this wonderful home in 2025. With lengthy home build times still occurring why wait when this home is turnkey ready for the entire family!

Enquire today to avoid disappointment.

All information provided has been obtained from sources we believe to be accurate, however, we cannot guarantee the information is accurate and we accept no liability for any errors or omissions (including but not limited to a property's land size, floor plans and size, building age and condition). Interested parties should make their own enquiries and obtain their own legal and financial advice. Should this property be scheduled for auction, the Vendor's Statement may be inspected at either of our two LJ Hooker Property Specialists Real Estate offices for 3 consecutive business days immediately preceding the auction and at the auction for 30 minutes before it starts.

RLA 208516



Disclaimer: All information contained therein is gathered from relevant third parties sources. We cannot guarantee or give any warranty about the information provided. Interested parties must rely solely on their own enquiries.

**LJ Hooker Greenwith | Golden Grove
| Mawson Lakes | Modbury
(08) 8289 6660**

More About this Property

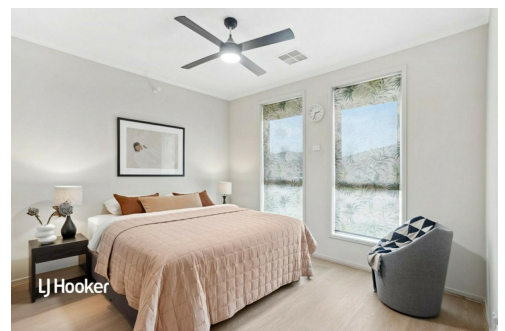
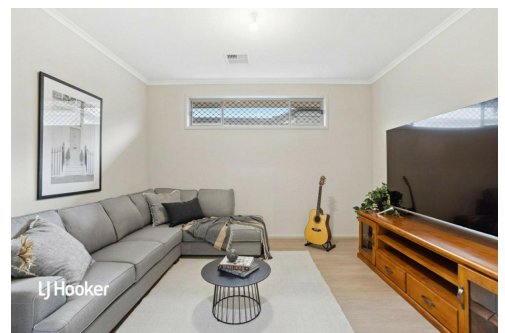
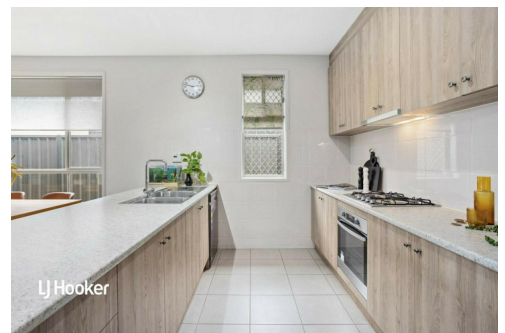
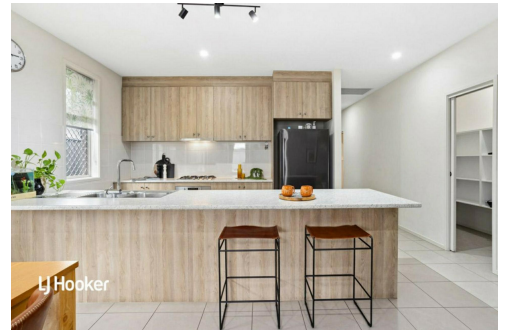
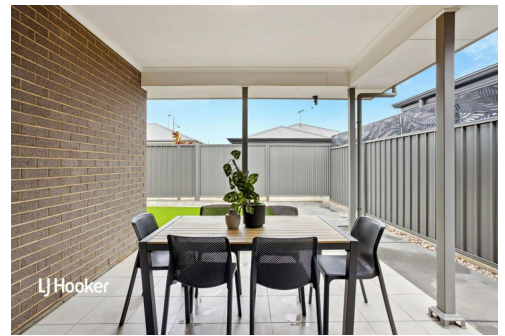
Property ID	2AUUGJU
Property Type	House
House Size	202 m ²
Land Area	395 m ²
Including	Air Conditioning Ducted Cooling Ducted Heating Dishwasher Outdoor Entertaining Built-in-Robes Secure Parking Fully Fenced Remote Garage Solar Panels

Shaun Roberts 0435 367 534

Managing Partner | Sales Specialist | shaunr@ljhsales.com.au

LJ Hooker Greenwith | Golden Grove | Mawson Lakes | Modbury (08) 8289 6660

North East, Shop 2, 1007 North East Road, RIDGEHAVEN SA 5097
greenwithgoldengrove.ljhooker.com.au | info@ljhsupport.com.au



Disclaimer: All information contained therein is gathered from relevant third parties sources. We cannot guarantee or give any warranty about the information provided. Interested parties must rely solely on their own enquiries.

**LJ Hooker Greenwith | Golden Grove
| Mawson Lakes | Modbury
(08) 8289 6660**



Scale in metres. This drawing is for illustration purposes only. All measurements are approximate and details intended to be relied upon should be independently verified. Produced by The Fotobase Group