

## Andrews Farm, 14 Harvest Court

### Exceptional Four-Bedroom Family Home with Modern Charm

Introducing this wonderful four-bedroom family home, brought to you by Hayden More of LJ Hooker. This residence presents a contemporary living experience that's bound to captivate a diverse array of potential buyers. Whether you're stepping into the world of homeownership for the first time or seeking a great investment opportunity, this property holds a universal appeal. Established in 1990 and resting on a spacious 652sqm approx. piece of land, it offers an abundance of room for a growing family.

The house boasts four generously designed bedrooms, providing ample space for a family's needs or hosting guests. The modern layout incorporates multiple living areas that ensure comfort and convenience. Inside, the décor showcases modern touches that create a stylish and inviting atmosphere.

The kitchen stands out as a focal point, boasting substantial storage capacity. It's designed



**For Sale**  
UNDER CONTRACT BY HAYDEN MORE

**View**  
[ljhooker.com.au/63GUFDC](http://ljhooker.com.au/63GUFDC)

**Contact**  
**Hayden More**  
0448 762 846  
[hayden.more@ljhces.com.au](mailto:hayden.more@ljhces.com.au)

**Corey Voss**  
0412 262 180  
[corey.voss@ljhces.com.au](mailto:corey.voss@ljhces.com.au)



**Disclaimer:** All information contained therein is gathered from relevant third parties sources. We cannot guarantee or give any warranty about the information provided. Interested parties must rely solely on their own enquiries.

**LJ Hooker Craigmore | Elizabeth | Salisbury**  
**(08) 8255 9555**

to cater to the demands of a bustling family or someone who delights in cooking and hosting. The open-plan design of the living and dining spaces fosters an airy environment, perfect for family get-togethers or spending quality time with friends.

Features to cherish:

- Expansive master bedroom with an adjoining two-way bathroom and a built-in robe
- Roomy bedrooms suitable for even the largest of families
- Multiple inviting living areas
- Well-proportioned kitchen abundant in cupboard space
- Versatile open floor plan
- Extensive outdoor entertaining area featuring wooden decking and a pitched roof verandah
- Double carport with convenient drive-through access to a shed or garage
- An impressive presence that stands out on the street

One of the standout features is the outdoor area, an ideal space for hosting gatherings in any season. The expansive pitched roof verandah, combined with the carport, offers flexibility and creates a welcoming setting for socializing and unwinding. Moreover, it provides ample room for kids and pets to play freely.

Nestled in a sought-after neighbourhood, this location is only a short distance away from the shopping and entertainment hubs of Munno Para Shopping City and Elizabeth City Centre. It's also conveniently close to the Playford Lakes golf course and a range of reputable schools, including Mark Oliphant College and St Columba College.

If you're eager to explore this exceptional property in person, don't hesitate to express your interest to Hayden More.

Disclaimer:

We have in preparing this document used our best endeavours to ensure the information contained is true and accurate, but accept no responsibility and disclaim all liability in respect to any errors, omissions, inaccuracies or misstatements contained. Prospective purchasers should make their own enquiries to verify the information contained in this document.

RLA155355



**LJ Hooker Craigmore | Elizabeth |  
Salisbury  
(08) 8255 9555**

**Disclaimer:** All information contained therein is gathered from relevant third parties sources. We cannot guarantee or give any warranty about the information provided. Interested parties must rely solely on their own enquiries.



## More About this Property

Property ID	63GUFDC
Property Type	House
House Size	178 m <sup>2</sup>
Land Area	653 m <sup>2</sup>

### Hayden More 0448 762 846

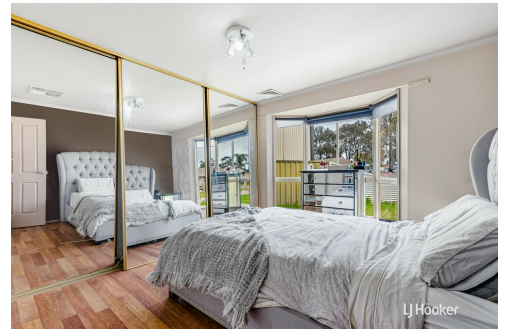
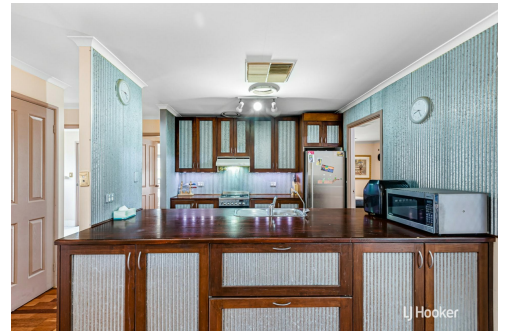
Sales Representative | [hayden.more@ljhces.com.au](mailto:hayden.more@ljhces.com.au)

### Corey Voss 0412 262 180

Licensee & Senior Sales Representative | [corey.voss@ljhces.com.au](mailto:corey.voss@ljhces.com.au)

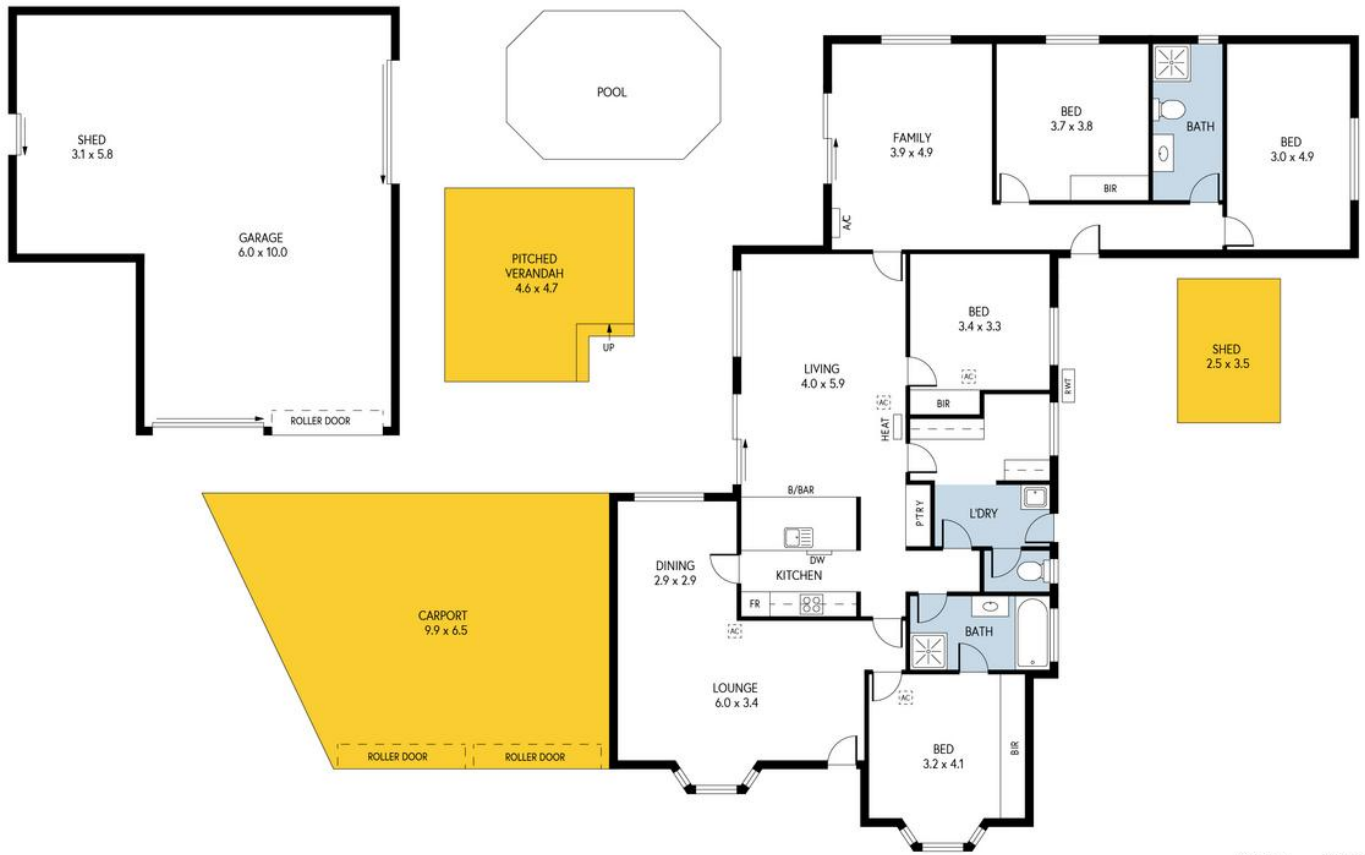
### LJ Hooker Craigmore | Elizabeth | Salisbury (08) 8255 9555

Shop 17, Craigmore Village, Yorktown Road, CRAIGMORE SA 5114  
[craigmoreelizabeth.ljhooker.com.au](http://craigmoreelizabeth.ljhooker.com.au) | [Office@ljhces.com.au](mailto:Office@ljhces.com.au)



**Disclaimer:** All information contained therein is gathered from relevant third parties sources. We cannot guarantee or give any warranty about the information provided. Interested parties must rely solely on their own enquiries.

**LJ Hooker Craigmore | Elizabeth |  
Salisbury  
(08) 8255 9555**



14 HARVEST COURT, ANDREWS FARM

INTERNAL - 195.7 SQM  
 EXTERNAL - 162.8 SQM  
 TOTAL - 358.5 SQM

Please Note: Every care has been taken to verify the correctness of the areas and details used in this leaflet. No warranty or representation is given or made as to the correctness of the information supplied and neither the owners, illustrator nor the Agent accept responsibility for errors or omissions. The sketch is for illustration purposes only and intending purchasers should satisfy themselves independently regarding sizes, layout and location of the property. Please check with local council that all structures are approved by council.

PRODUCED BY CLIQUECREATIVE



LJ Hooker Craigmore | Elizabeth |  
 Salisbury  
 (08) 8255 9555

**Disclaimer:** All information contained therein is gathered from relevant third parties sources. We cannot guarantee or give any warranty about the information provided. Interested parties must rely solely on their own enquiries.