



Sold



16 Phelp Court, Amaroo

Hang on, Phelp is on its way...

Please note: 16 Phelp Ct is still for sale but is now leased until August 2026. Inspections are by appointment.
Exceptional entry level home into Amaroo, immaculately presented three-bedroom home located in a quiet closed street.

The home features a formal living room, separate dining room, spacious kitchen, a covered outdoor entertaining area and front deck.

The kitchen is quite spacious and includes a gas cooktop electric oven, plenty of cupboards and easy-clean benches.

There's also a single lock-up garage with remote

For more information, please call me:
Jeff Shortland, 0417 483 627, or email
Jeff.shortland@ljhooker.com.au

In brief:

- outstanding brick veneer home
- three bedrooms
- one bathroom
- formal living
- separate dining

3 1 1

FOR SALE
\$730,000+

AGENTS

Jeff Shortland
0417 483 627
jeff.shortland@ljhooker.com.au

Julian Parmeter
0415 377 225
jparmeter@ljhgungahlin.com.au

AGENCY

LJ Hooker Gungahlin
(02) 6213 3999

All information contained therein is gathered from relevant third parties sources.
We cannot guarantee or give any warranty about the information provided.
Interested parties must rely solely on their own enquiries.

LJ Hooker

- single garage
- gas heating
- air conditioner
- approximately 122sq/m under roof
- 431sq/m block
- covered pergola
- enclosed backyard
- quiet location
- Amaroo Schools and shopping center 800m
- Gungahlin CBD 3.5km

General:

- Rates approximately \$2600pa
- Land tax approximately \$4050pa
- UV \$514,000
- EER 3.5

MORE DETAILS

Property ID	3580GCY
Property Type	House
House Size	101 m2
Land Area	431 m2
EER	3.5
Including	Air Conditioning

Jeff Shortland 0417 483 627

Licensed Agent | jeff.shortland@ljhooker.com.au

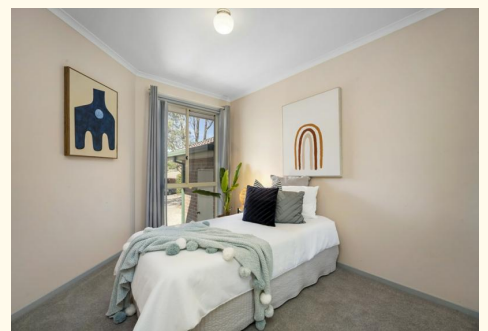
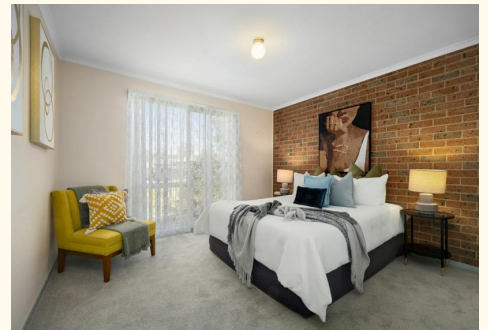
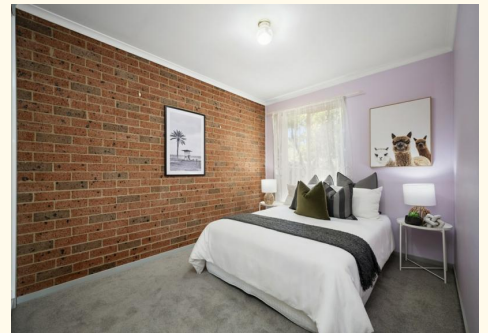
Julian Parmeter 0415 377 225

| jparmeter@ljhgungahlin.com.au

LJ Hooker Gungahlin (02) 6213 3999

Suite 2C, Level 1, Gungahlin Village, 46-50 Hibberson Street,
GUNGAHLIN ACT 2912

gungahlin.ljhooker.com.au | gungahlin@ljhooker.com.au





The floor plan is not to scale, measurements are indicative and in metres. All features included in this 3D plan are for inspiration purposes only. This is not an exact replica of the property or the position of exterior elements. Plans should not be relied on. Interested parties should make and rely on their own enquiries.

16 Phelp Court, Amaroo

Produced by DIAKRIT