



Altona Meadows, 67 Rosebery Street

Stylish Family Living in a Sought-After Location!

Expressions of Interest closing Tuesday 20th May 12:00pm (Unless Sold Prior).

LJ Hooker Altona North is proud to present this feature-packed family gem in the heart of Altona Meadows - an exciting and affordable opportunity to secure your place in one of the area's most convenient and family-friendly pockets.

Blending indoor comfort with versatile outdoor spaces, this much-loved residence is ideal for first home buyers, growing families, builders, or savvy investors seeking lifestyle, location, and future potential.

Perfectly positioned just moments from Altona Meadows Primary School, Central Square Shopping Centre, Alma Avenue Playground, and Little Rosebery Café, this home offers the perfect balance of convenience and community.

3

2

4

For Sale

EOI: \$750,000 - \$800,000

View

Sat 3rd May @ 1:30PM - 2:00PM

Contact

Karl El-Hassan

0401 191 613

karl.elhassan@ljhooker.com.au

Tassie El-Hassan

0425 847 731

tassie.elhassan@ljhooker.com.au



LJ Hooker Altona North
(03) 9392 7888

Disclaimer: All information contained therein is gathered from relevant third parties sources. We cannot guarantee or give any warranty about the information provided. Interested parties must rely solely on their own enquiries.

Property Features Include:

- Three well-appointed bedrooms, including a master suite with ensuite and built-in robes
- Remaining two bedrooms also with built-in robes, all featuring ceiling fans and easy access to a central bathroom
- Spacious open-plan living area, ideal for family relaxation and entertaining
- Spacious land size of 501m2 (approx)
- Modern kitchen equipped with stainless steel appliances and ample storage
- Expansive dining area that can comfortably host family meals or dinner parties
- Recently installed wall-mounted heating plus ceiling fans for year-round comfort
- Central family bathroom complete with a full-sized bathtub and separate toilet
- Wide driveway with a carport and convenient side access - perfect for extra vehicles or trailers
- Healthy rental return of \$2,260 per month with the lease ending in 2/8/2025

Additional highlights:

- Generous backyard perfect for kids and pets
- Low-maintenance allotment with potential to add value
- Quiet, family-focused street
- Double carport
- Timber floorboards throughout

Lifestyle amenities right at your doorstep:

- Altona Meadows Primary School
- Central Square Shopping Centre
- Laverton and Aircraft Train Stations
- Multiple parks, reserves, and walking trails
- Local cafés and eateries

Whether you're stepping into the market, expanding your portfolio, or looking for your next project - this home delivers unbeatable value and potential in a high-growth location.

Don't miss this opportunity!

Contact Karl El-Hassan on 0401 191 613 or Tassie El-Hassan on 0425 847 731 to arrange an inspection today.

More About this Property

Property ID	2E6HXN
Property Type	House
Land Area	501 m ²

Karl El-Hassan 0401 191 613

BDM | Sales Executive | karl.elhassan@ljhooker.com.au

Tassie El-Hassan 0425 847 731

Licensee | tassie.elhassan@ljhooker.com.au

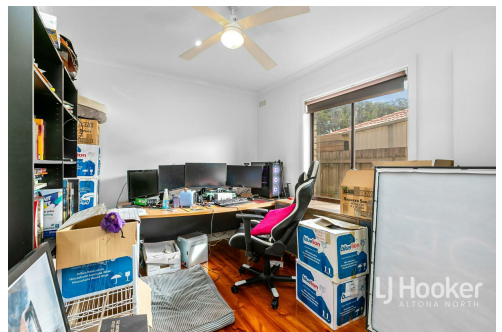
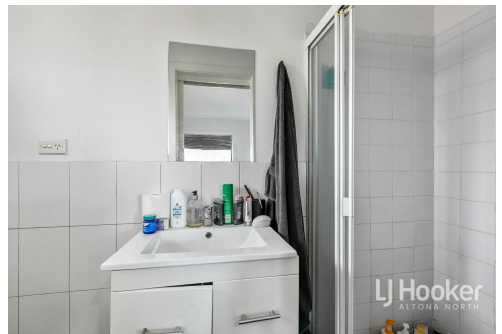
LJ Hooker Altona North (03) 9392 7888

21 Borrack Square, ALTONA NORTH VIC 3025

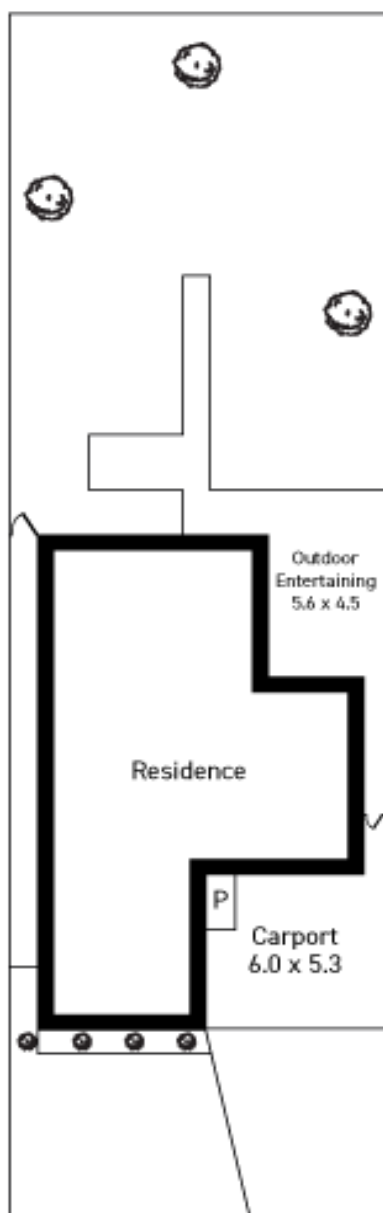
altonanorth.ljhooker.com.au | altonanorth@ljhooker.com.au



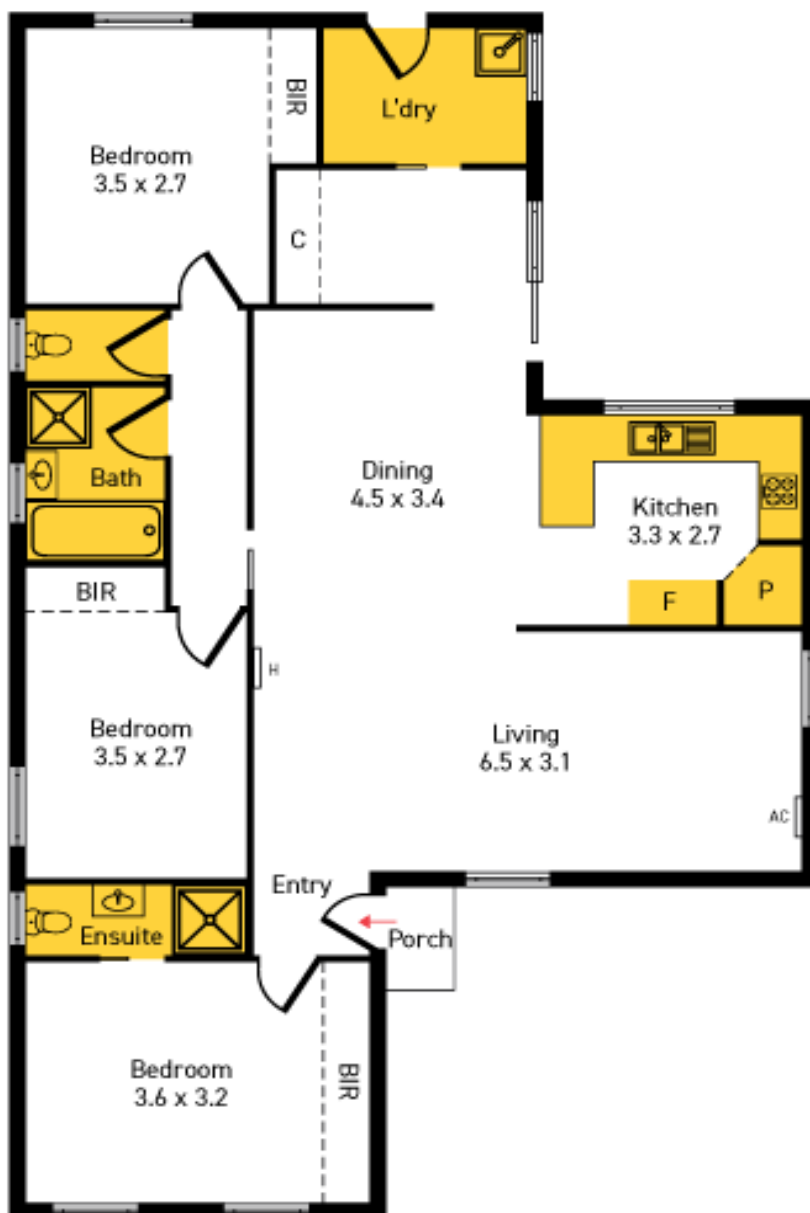
Disclaimer: All information contained therein is gathered from relevant third parties sources. We cannot guarantee or give any warranty about the information provided. Interested parties must rely solely on their own enquiries.



LJ Hooker Altona North
(03) 9392 7888



SITE PLAN



FLOOR PLAN



Whilst every attempt has been made to ensure the accuracy of this floorplan, measurements of doors, windows, rooms and any other items are approximates only. The producer or agent cannot be held responsible for any errors, omissions or misstatements. This plan is for illustrative purposes only and should be used as such.