



203 Victoria Street, Altona Meadows

## Timeless Character in a Prime Parkside Setting

### The Property

Welcome to 203 Victoria Street, Altona Meadows. Traditional features and classic style epitomize this single-storey family home, ideal for first home buyers and astute investors. High ceilings and oversized windows allow light and air to travel throughout the flexible floor plan comprising three living zones, four bedrooms and two bathrooms. Nestled within the family-friendly neighbourhood of Altona Meadows, some simple modernization will breathe new life into this charming brick home enjoying access to all amenities and surrounded by abundant parklands and green space.

### The Point of Difference

- Three separate living zones begin with a sunken formal lounge and step-up dining room upon entry while entertainers will relish in the family/meals area adjacent the kitchen which is a spacious and multi-functional zone with glass sliding doors seamlessly transitioning to the outdoor patio.
- The functional kitchen includes loads of preparation and storage space and is fitted with quality cooking appliances including wall oven and grill, gas cooktop and range hood. With a pleasant outlook to the garden, the home chef will enjoy spending time here

4 2 2

### AUCTION

Sat 14th Mar @ 11:30AM

### VIEW

Sat 21st Feb @ 1:30PM - 2:00PM

### AGENTS

Natalie Newdick  
0451 992 994  
natalie.newdick@ljhooker.com.au

Paul Caine  
0421 551 051  
paul.caine@ljhooker.com.au

### AGENCY

LJ Hooker Point Cook  
(03) 9975 7080

All information contained therein is gathered from relevant third parties sources.  
We cannot guarantee or give any warranty about the information provided.  
Interested parties must rely solely on their own enquiries.



- creating delicious dishes for family and friends.
- Four bedrooms include the generous master suite with walk-in-robe and updated en suite, while bedrooms two and three include built-in robes.
- Both bathrooms have been tastefully renovated and include contemporary tiling, rainforest showerheads and black vanities including the central bathroom which boasts a freestanding bath.
- Low-maintenance and lifestyle focused, the 597m2 (approx.) grounds include simple hedges and shrubs and lush green lawn space for children and pets to play.
- Additional highlights include a tandem lock up garage with additional off-street parking, 6.6kw solar panels, upgraded electrical box, wooden floorboards, renovated laundry, ducted heating, three split systems, neutral colour scheme and quality window furnishings throughout.

#### The Point of Interest

This family friendly neighbourhood is surrounded by recreational spaces including the walking tracks of Skeleton Creek and the Cheetham Wetlands. Local amenities include an array of dining and specialty stores, Central Square Shopping Centre and Altona Meadows Library, while several schools including Altona Meadows Primary School and Altona Green Primary School are also nearby. Commuters will enjoy easy access to public transport and direct access to the Princes Freeway.

Note. All stated dimensions are approximate only. Particulars given are for general information only and do not constitute any representation on the part of the vendor or agent. Any school zoning stated based is on [www.findmyschool.vic.gov.au](http://www.findmyschool.vic.gov.au) as of 12/02/26.

#### MORE DETAILS

Property ID	2J0THGH
Property Type	House
Land Area	597 m2

#### Natalie Newdick 0451 992 994

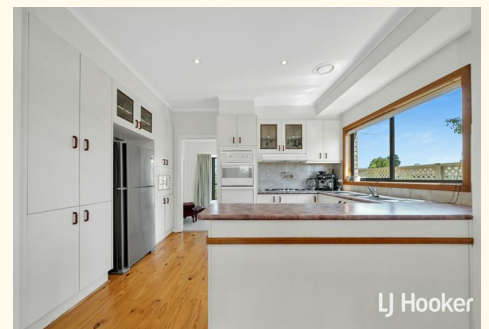
Sales Executive | [natalie.newdick@ljhooker.com.au](mailto:natalie.newdick@ljhooker.com.au)

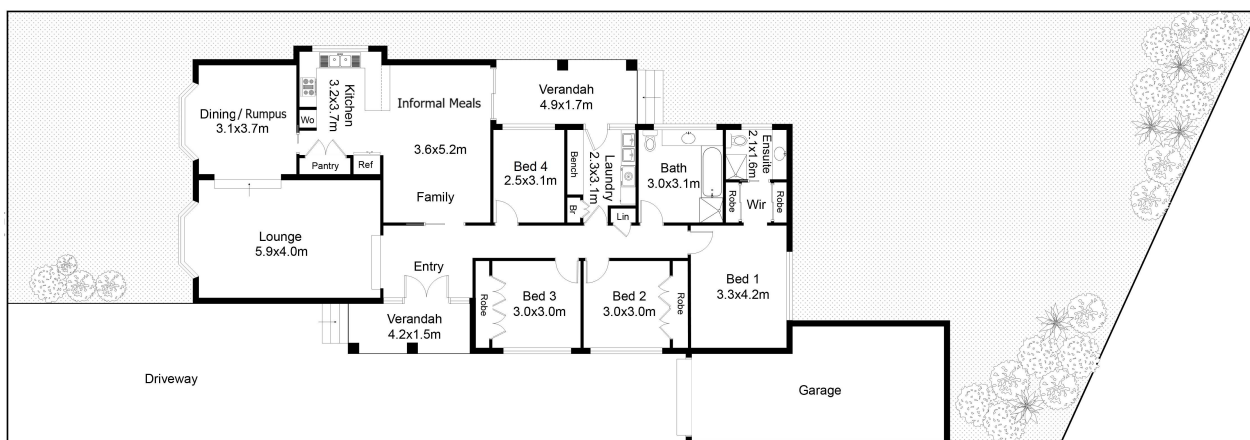
#### Paul Caine 0421 551 051

Director | Licensed Estate Agent | Auctioneer |  
[paul.caine@ljhooker.com.au](mailto:paul.caine@ljhooker.com.au)

#### LJ Hooker Point Cook (03) 9975 7080

Shop 211, 4 Main Street, POINT COOK VIC 3030  
[pointcook@ljhooker.com.au](mailto:pointcook@ljhooker.com.au) | [pointcook@ljhooker.com.au](mailto:pointcook@ljhooker.com.au)





FLOOR PLAN ON SITE

This floor plan including furniture, fixture measurements and dimensions are approximate and for illustrative purposes only.  
Boxbrownie.com gives no guarantee, warranty or representation as to the accuracy and layout.  
All enquiries must be directed to the agent, vendor or party representing this floor plan.

