



Unit 1/106 Tanamera Drive, Alstonville

## Duplex .... Immaculate and ready for a new owner


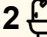

This immaculate duplex is only a short walk to the town centre, schools, bowling club and sporting fields, and is located a short distance to the Ballina/Byron airport and local beaches.

On entering you'll find an open plan kitchen, dining & living area plus a covered outdoor courtyard ideal for entertaining or just relaxing with complete privacy.

### Features

- 3 bedrooms with built-in-robos & fans, main with en-suite.
- Well designed kitchen with dishwasher, pantry and generous cupboard space.
- Open plan living & dining with fully ducted multi zoned air-conditioning
- Covered alfresco area with northerly aspect and features the Vergola (open close roof system)
- Main bathroom with separate toilet plus laundry with storage
- Single remote garage
- Solar hot water / Timber look flooring/ Ducted air-conditioning / Vergola roof system

This home is fresh, spacious, immaculate and handy to the

3  2  1 

**FOR SALE**  
\$770,000 to \$790,000

### AGENTS

Vicki Heathwood  
0432 247 264  
vheathwood.alstonville@ljhooker.com.au

### AGENCY

LJ Hooker Alstonville  
(02) 6628 1163

All information contained therein is gathered from relevant third parties sources.  
We cannot guarantee or give any warranty about the information provided.  
Interested parties must rely solely on their own enquiries.

 **LJ Hooker**

Alstonville village centre, school and sporting fields.

Inspections are invited with Exclusive Agent: Vicki Heathwood.

### **MORE DETAILS**

Property ID	16MKF55
Property Type	House
Including	Ensuite
	Ducted Cooling
	Ducted Heating
	Courtyard
	Dishwasher
	Outdoor Entertaining
	Built-in-Robes
	Fully Fenced
	Remote Garage
	Solar Hot Water

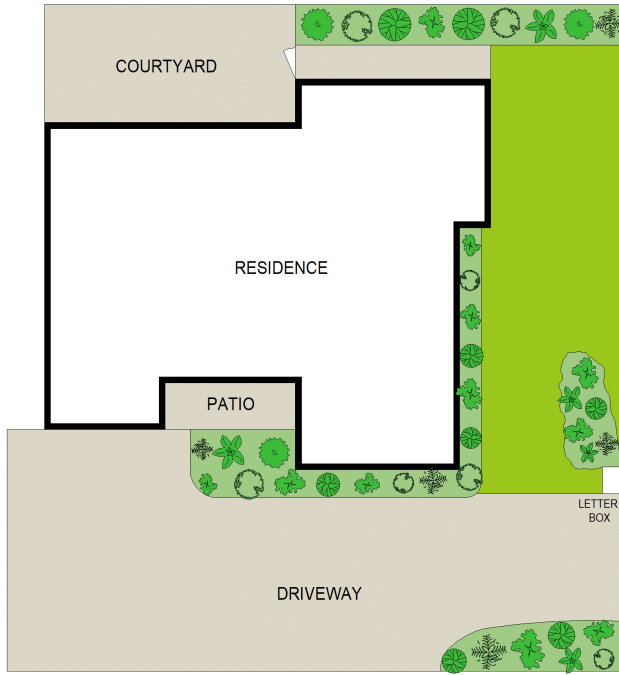
**Vicki Heathwood 0432 247 264**

Sales Consultant/Licensed Real Estate Agent |  
vheathwood.alstonville@ljhooker.com.au

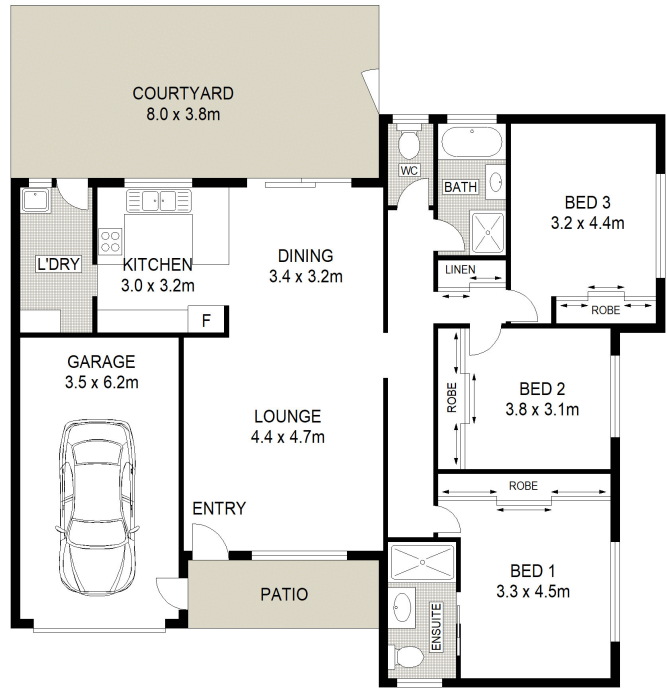
**LJ Hooker Alstonville (02) 6628 1163**

Shop 16 The Plaza, ALSTONVILLE NSW 2477  
alstonville.ljhooker.com.au | alstonville@ljhooker.com.au





SITE PLAN (NOT TO SCALE)



ADDRESS :

1/106 TANAMERA DRIVE, ALSTONVILLE

DISCLAIMER: THIS IS FOR ILLUSTRATIVE PURPOSES ONLY. ALL DIMENSIONS ARE APPROXIMATE AND IT DOES NOT CONSTITUTE PART OF ANY LEGAL DOCUMENTS.

All information contained therein is gathered from relevant third parties sources. We cannot guarantee or give any warranty about the information provided. Interested parties must rely solely on their own enquiries.