



3 Mantula Place, Alstonville

Quality with location on the Plateau

This quality built home with space, privacy and position, will be a delight to inspect. Located in one of the best pockets of the Alstonville village in a quiet cul-de-sac. From the moment you walk inside, this classic home showcases endless features and quality.

With only a short distance to the Alstonville Village Centre, school & sporting fields plus a short drive to the Ballina/Byron Gateway airport and local beaches this property will appeal to families & retirees.

Set on a level 713 sqm block with side access to yard bring the van, boat plus room for a pool & shed.

Features

- Spacious 3 bedrooms with built-ins
- Master bedroom with en-suite, walk-in-robe & air-conditioning
- Spacious formal lounge with neutral colour tones throughout plus additional study
- Beautifully designed kitchen, with pantry, dishwasher, loads of cupboards & bench space ... a chef's delight
- Open plan family room & dining with solid timber flooring and air-conditioning

3 2 2

FOR SALE
\$1,295,000 - \$1,395,000

AGENTS

Vicki Heathwood
0432 247 264
vheathwood.alstonville@ljhooker.com.au

AGENCY

LJ Hooker Alstonville
(02) 6628 1163

All information contained therein is gathered from relevant third parties sources. We cannot guarantee or give any warranty about the information provided. Interested parties must rely solely on their own enquiries.

LJ Hooker

- Plantation shutters throughout
- Covered alfresco entertaining area with complete privacy plus cabana
- Double remote extra large garage with internal access and workshop area
- Generous main three way bathroom
- Laundry with ample storage
- Beautiful easy care gardens enhance the yard with water tank , raised vege gardens and privacy

A timeless, quality home with "class" and inspections are invited with exclusive agent Vicki Heathwood.

MORE DETAILS

Property ID	16PWF55
Property Type	House
Land Area	713 m2
Including	Ensuite Study Air Conditioning Dishwasher Outdoor Entertaining Floorboards Workshop Built-in-Robes Fully Fenced Remote Garage Water Tank

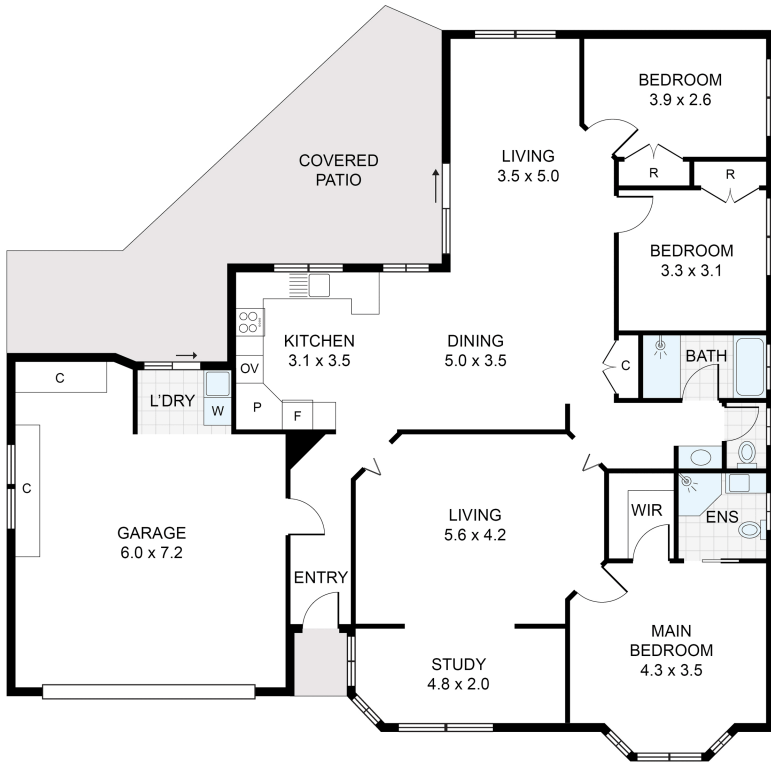
Vicki Heathwood 0432 247 264

Sales Consultant/Licensed Real Estate Agent |
vheathwood.alstonville@ljhooker.com.au

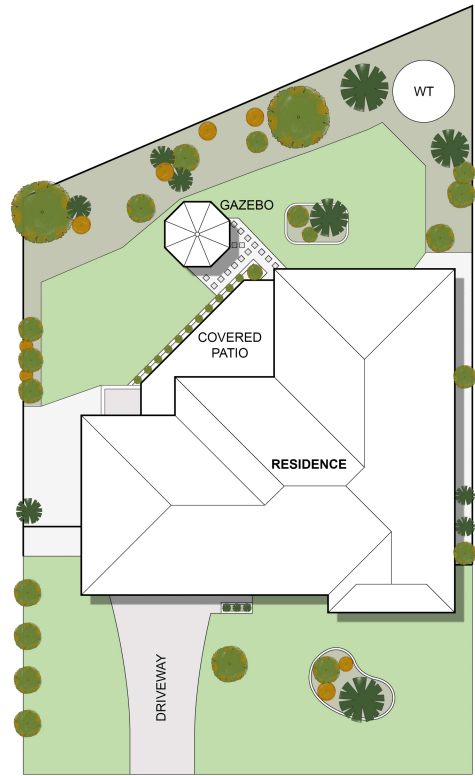
LJ Hooker Alstonville (02) 6628 1163

Shop 16 The Plaza, ALSTONVILLE NSW 2477
alstonville.ljhooker.com.au | alstonville@ljhooker.com.au





RESIDENCE : 185m²



MANTULA PLACE
SITE PLAN

APPROXIMATE AREAS
INTERNAL FLOOR SPACE - 150m ²
EXTERNAL FLOOR SPACE - 36m ²
GARAGE - 35m ²

3 Mantula Place, Alstonville

Floor Plan Disclaimer: Media Drive (MD) floor plans / site plans are intended as an approximate guide only. No representations or warranties of any nature are given or intended and any person using this information other than as a guide should always rely on their own enquiries. Media Drive property marketing services: 141 9379054 / Photography, Floor plans, Video, Aerial photography / www.mediadrive.com.au



All information contained therein is gathered from relevant third parties sources. We cannot guarantee or give any warranty about the information provided. Interested parties must rely solely on their own enquiries.

