



15 Valley Drive, Alstonville

## Perfectly renovated in Ocean View Estate

This "Eggins" masterbuilt quality home set on a 1,074 sqm block in the sought after Ocean View Estate will impress. Easy care gardens enhance this immaculately renovated property with a family friendly large yard ideal for play or the keen gardener.

Finished to perfection, this home showcases superb style & quality and only a short distance to the Alstonville Village Centre, school & sporting fields plus a short drive to the Ballina/Byron Gateway airport and local beaches.

### Features

- 4 generous sized bedrooms with built-in-robies + fans
- Master bedroom with en-suite
- Sleek designer kitchen, walk-in pantry, stone bench tops, dishwasher, soft-close drawers, 'A true chef's delight'
- The open plan kitchen, dining, family & lounge areas flow seamlessly between the indoors and outdoors
- Generous lounge room / Air-Conditioning
- Modern main bathroom and generous laundry with storage plus third toilet

All information contained therein is gathered from relevant third parties sources. We cannot guarantee or give any warranty about the information provided. Interested parties must rely solely on their own enquiries.

4  2  2 

**FOR SALE**  
\$1,250,000 - \$1,320,000

### AGENTS

Vicki Heathwood  
0432 247 264  
vheathwood.alstonville@ljhooker.com.au

### AGENCY

LJ Hooker Alstonville  
(02) 6628 1163

 **LJ Hooker**

- Front verandah with elevated northerly views and back veranda for easy entertaining
- Double remote garage with internal access & workshop/ storage area ... with drive through feature

This will impress ... don't miss this unique opportunity to purchase designer style living with space, privacy, and location. Inspections are invited with Exclusive Agent, Vicki Heathwood.

## MORE DETAILS

Property ID	16PSF55
Property Type	House
Land Area	1074 m2
Including	<ul style="list-style-type: none"> <li>Ensuite</li> <li>Air Conditioning</li> <li>Toilets (3)</li> <li>Dishwasher</li> <li>Outdoor Entertaining</li> <li>Floorboards</li> <li>Workshop</li> <li>Built-in-Robes</li> <li>Fully Fenced</li> <li>Remote Garage</li> </ul>

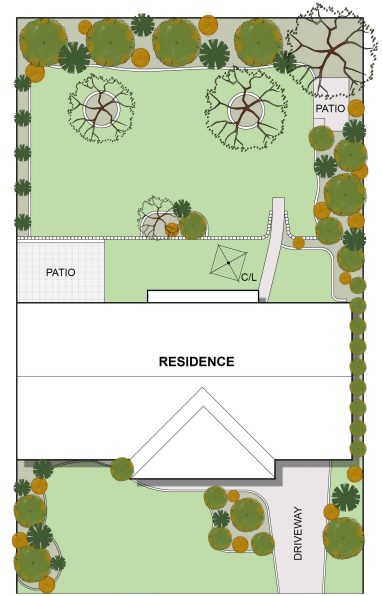
**Vicki Heathwood 0432 247 264**  
 Sales Consultant/Licensed Real Estate Agent |  
 vheathwood.alstonville@ljhooker.com.au

**LJ Hooker Alstonville (02) 6628 1163**  
 Shop 16 The Plaza, ALSTONVILLE NSW 2477  
 alstonville.ljhooker.com.au | alstonville@ljhooker.com.au





RESIDENCE : 213m<sup>2</sup>



VALLEY DRIVE  
SITE PLAN

## 15 Valley Drive, Alstonville

Floor Plan Disclaimer: Media Drive (MD) floor plans / site plans are intended as an approximate guide only. No representations or warranties of any nature are given or intended and any person using this information other than as a guide should always rely on their own enquiries. Media Drive property marketing services / 0413979054 / Photography, Floor plans, Video, Aerial photography / www.mediadrive.com.au



### APPROXIMATE AREAS

INTERNAL FLOOR SPACE - 173m<sup>2</sup>

EXTERNAL FLOOR SPACE - 34m<sup>2</sup>

GARAGE - 40m<sup>2</sup>

All information contained therein is gathered from relevant third parties sources.  
We cannot guarantee or give any warranty about the information provided.  
Interested parties must rely solely on their own enquiries.

