



15 Maple Drive, Alstonville

Walk to Town

Positioned on a 640sqm block and conveniently located just moments from the heart of Alstonville Village, this well-presented home offers comfortable family living with practical features throughout.

Inside, you'll find three carpeted bedrooms, each complete with built-in robes. The renovated main bathroom is complemented by a separate toilet, adding convenience for busy households.


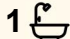
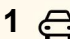
The light-filled open-plan living area flows seamlessly through the informal dining space and kitchen, creating an inviting hub for everyday living and entertaining. Step outside to a spacious rear deck overlooking the fully fenced backyard, providing the perfect setting for family gatherings, children's play, or simply relaxing outdoors. A garden shed adds valuable storage space.

The former single garage has been converted into a versatile additional room with sliding door access, offering flexibility as a home office, rumpus room, studio, or extra living space. An internal laundry features excellent storage and direct access to the backyard.

Set in a family-friendly location with easy access to schools, shops, cafes, and essential services in Alstonville Village, this property presents an outstanding opportunity for first-home buyers, downsizers, or investors alike.

Property Features:

- Three carpeted bedrooms with built-in robes
- Renovated bathroom with separate toilet

3  1  1 

FOR SALE
AUCTION : TBC

VIEW
Sat 13th Jun @ 12:00PM - 12:30PM

AGENTS
Gabrielle Thompson
0421 029 162
gthompson.alstonville@ljhooker.com.au

AGENCY
LJ Hooker Alstonville
(02) 6628 1163

All information contained therein is gathered from relevant third parties sources.
We cannot guarantee or give any warranty about the information provided.
Interested parties must rely solely on their own enquiries.

 **LJ Hooker**

- Open-plan living, informal dining and kitchen area
- Converted single garage offering flexible additional space
- Internal laundry with excellent storage
- Garden shed - 640sqm fully fenced block
- Generous rear deck - Solar panels
- Convenient location close to Alstonville Village amenities

A comfortable and practical home in a sought-after location, ready to be enjoyed. Please feel welcome to inspect with Exclusive Agent Gabrielle Thompson.

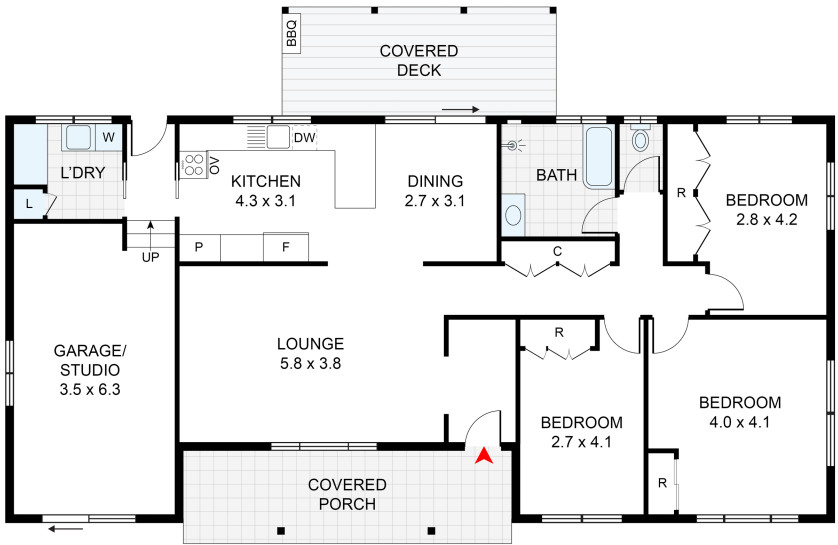
MORE DETAILS

Property ID	16SJF55
Property Type	House
Land Area	640 m2
Including	Air Conditioning Deck Fully Fenced Solar Panels

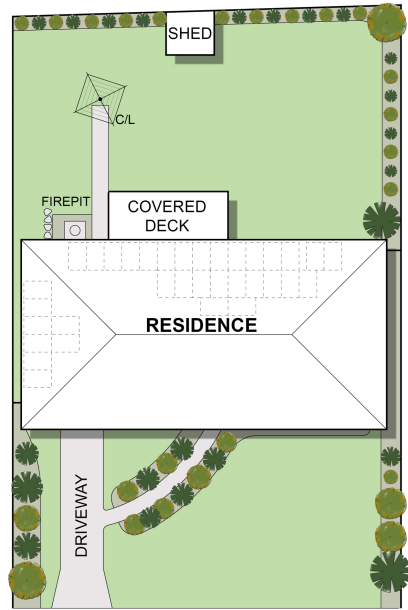
Gabrielle Thompson 0421 029 162
Sales Consultant/Licensed Real Estate Agent |
gthompson.alstonville@ljhooker.com.au

LJ Hooker Alstonville (02) 6628 1163
Shop 16 The Plaza, ALSTONVILLE NSW 2477
alstonville.ljhooker.com.au | alstonville@ljhooker.com.au





RESIDENCE : 147m²
(INCLUDES GARAGE)



MAPLE DRIVE
SITE PLAN
(NOT TO SCALE)

15 Maple Drive, Alstonville

Floor Plan Disclaimer: Media Drive (MD) floor plans / site plans are intended as an approximate guide only. No representations or warranties of any nature are given or intended and any person using this information other than as a guide should always rely on their own enquiries. Media Drive property marketing services / 041979054 / Photography, Floor plans, Video, Aerial photography / www.mediadrive.com.au



APPROXIMATE AREAS	
INTERNAL FLOOR SPACE	- 126m ²
EXTERNAL FLOOR SPACE	- 31m ²
GARAGE/ STUDIO	- 21m ²

All information contained therein is gathered from relevant third parties sources. We cannot guarantee or give any warranty about the information provided. Interested parties must rely solely on their own enquiries.

