

11 Elliott Avenue, Alstonville

## One of the villages best little pockets

This immaculate stylish home situated on a level 670 sqm block offers easy comfortable living. Situated in a quiet area with the convenience of a quick stroll to the village services this family friendly home and yard also offers side access ..... ideal for the shed.

The home features

- 3 bedrooms with built-in-robos / Generous main bedroom
- Open plan kitchen with pantry
- Lounge/dining with air-conditioning showcasing timber floors
- Sunny north facing second living / Sun Room
- Renovated main bathroom/ Generous laundry with storage
- Single garage with internal access

This property will be a delight to inspect and buyers will be impressed with the quality, space and presentation the home provides. .

Inspections are invited with exclusive agent Vicki Heathwood.

3  1  1 

**FOR SALE**  
\$900,000 - \$950,000

**VIEW**  
By Appointment

**AGENTS**  
Vicki Heathwood  
0432 247 264  
vheathwood.alstonville@ljhooker.com.au

**AGENCY**  
LJ Hooker Alstonville  
(02) 6628 1163

All information contained therein is gathered from relevant third parties sources.  
We cannot guarantee or give any warranty about the information provided.  
Interested parties must rely solely on their own enquiries.

 **LJ Hooker**

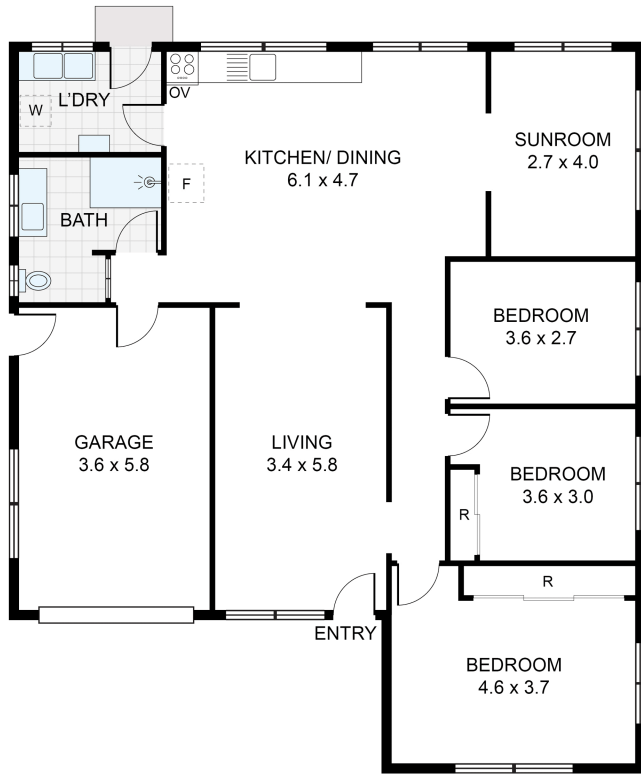
## MORE DETAILS

Property ID T24F55  
Property Type House  
Land Area 670 m2  
Including Air Conditioning  
Floorboards  
Built-in-Robes  
Fully Fenced

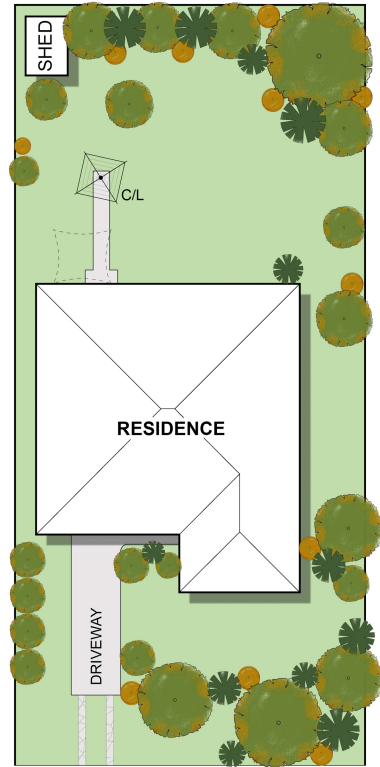
**Vicki Heathwood 0432 247 264**  
Sales Consultant/Licensed Real Estate Agent |  
vheathwood.alstonville@ljhooker.com.au

**LJ Hooker Alstonville (02) 6628 1163**  
Shop 16 The Plaza, ALSTONVILLE NSW 2477  
alstonville.ljhooker.com.au | alstonville@ljhooker.com.au





**RESIDENCE : 141m<sup>2</sup>**  
(INCLUDES GARAGE)



**ELLIOTT AVENUE**  
**SITE PLAN**  
(NOT TO SCALE)

**APPROXIMATE AREAS**

INTERNAL FLOOR SPACE - 121m <sup>2</sup>
EXTERNAL FLOOR SPACE - 4m <sup>2</sup>
GARAGE - 20m <sup>2</sup>

**11 Elliott Avenue, Alstonville**

Floor Plan Disclaimer: Media Drive (MD) floor plans / site plans are intended as an approximate guide only. No representations or warranties of any nature are given or intended and any person using this information other than as a guide should always rely on their own expertise. Media Drive property marketing services / 0413979054 / Photography, Floor plans, Video, Aerial photography / www.mediadrive.com.au



All information contained therein is gathered from relevant third parties sources.  
We cannot guarantee or give any warranty about the information provided.  
Interested parties must rely solely on their own enquiries.

