



Alexandra, 58 Hawley Road

PRICED TO SELL

Offering a true lifestyle experience this property is well worth your inspection.

Located a short distance to Clyde and Alexandra.

Click here for virtual tour https://youriguide.com/58_hawley_rd_blackmans_ota_nz/

- *Three bedrooms
- *Two bathrooms. One with dual access and including spa bath
- *Open-plan kitchen, dining, living
- *Separate lounge
- *Office
- *Heating options with log burner, 2x Heat pumps, Heat transfer unit, Wall heaters
- *Indoor - Outdoor flow via French doors to Queenslander-type veranda
- *Numerous sheds for storage
- *Double garage with Workshop
- *Glasshouse and raised garden beds
- *Assorted fruit trees



Disclaimer: All information contained therein is gathered from relevant third parties sources. We cannot guarantee or give any warranty about the information provided. Interested parties must rely solely on their own enquiries.

3

2

3

For Sale

Enquiries Over \$1,065,000

View

[ljhooker.co.nz/1595GME](https://l.jhooker.co.nz/1595GME)

Contact

Mick Enright

021 043 5272

menright.alexandra@ljhooker.co.nz

LJ Hooker Alexandra

(03) 448 8888

Central and Lakes Realty 2008 Ltd

Comfortable and quiet living environment. Being there is everything. Contact for more information.

More About this Property

Property ID	1595GME
Property Type	Lifestyle
House Size	153 m ²
Land Area	4860 m ²
Including	Ensuite Dishwasher

Licensed Real Estate Agents (REAA2008)

Mick Enright 021 043 5272

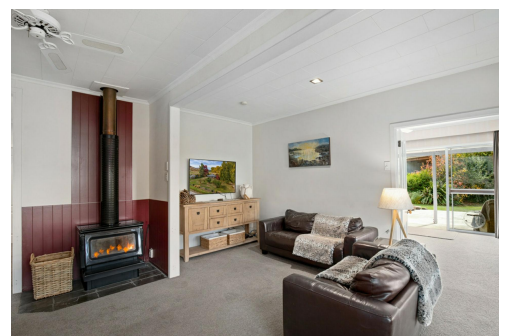
Licensed Salesperson | menright.alexandra@ljhooker.co.nz

LJ Hooker Alexandra (03) 448 8888

Central and Lakes Realty 2008 Ltd

10 Centennial Ave, ALEXANDRA 9320

alexandra.ljhooker.co.nz | alexandra@ljhooker.co.nz



Disclaimer: All information contained therein is gathered from relevant third parties sources.

We cannot guarantee or give any warranty about the information provided. Interested parties must rely solely on their own enquiries.

LJ Hooker Alexandra

(03) 448 8888

Central and Lakes Realty 2008 Ltd

58 Hawley Rd, Blackmans, OTA

Main Floor Exterior Area 157.97 m²
Interior Area 148.56 m²



0 2 4 m

PREPARED: 2024/09/21



White regions are excluded from total floor area in iGUIDE floor plans. All room dimensions and floor areas must be considered approximate and are subject to independent verification.

iGUIDE