

Alexandra, 202 Blackman Road

LIFESTYLE & LUXURY IN EARNSCLEUGH

Set privately on 5.1 hectares in a sought after elevated position this expansive, high quality home has been thoughtfully designed to maximise sun, privacy and views. Generous living spaces throughout create an inviting atmosphere, with fabulous indoor/outdoor flow to a sheltered, landscaped entertaining area.

The heart of the home is a country-style kitchen with large bench space, a walk-in pantry, and views that will take your breath away. The formal lounge, complete with a gas fire, opens to a north-facing patio, while a separate family room is ideal for casual gatherings. A sophisticated, moody wine cellar adds a touch of luxury, designed for fine wine tasting and food pairings, it's a perfect place to indulge.

Accommodation includes four generous double bedrooms. The master suite features a spacious walk-in robe and grand ensuite with a double shower and bath. The fourth bedroom, complete with its own lounge and ensuite, offers a perfect setup for guests, extended family, or potential income.

Comfort is ensured with full double glazing, diesel-fired radiator heating, underfloor

4

3

3

For Sale
Set Sale

View
By Appointment

Contact
Brenda Griffin
022 154 6023
bgriffin.alexandra@ljhooker.co.nz



Disclaimer: All information contained therein is gathered from relevant third parties sources. We cannot guarantee or give any warranty about the information provided. Interested parties must rely solely on their own enquiries.

LJ Hooker Alexandra
(03) 448 8888
Central and Lakes Realty 2008 Ltd

heating, and a gas fire for added ambience.

Outside, you'll find a 3 car garage next to the home, plus a large 4-bay shed with workshop, stables, a lean-to, and two sets of cattle yards ideal for those seeking a true lifestyle block.

An excellent irrigation quota, pump system, and K-line ensure your land remains productive year-round.

This is country living at its best - elegant, private, and practical. A truly special property that must be seen to be appreciated.

Set Sale Friday 13 June 2025, 4 pm (unless sold prior) <https://youtu.be/P3s35yHBZss>

More About this Property

Property ID	15S1GME
Property Type	Lifestyle
House Size	277 m2
Land Area	5.19 hectare
Licensed Real Estate Agents (REAA2008)	

Brenda Griffin 022 154 6023

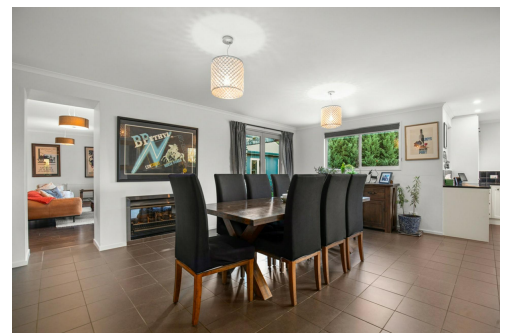
Licensed Salesperson | bgriffin.alexandra@ljhooker.co.nz

LJ Hooker Alexandra (03) 448 8888

Central and Lakes Realty 2008 Ltd

10 Centennial Ave, ALEXANDRA 9320

alexandra.ljhooker.co.nz | alexandra@ljhooker.co.nz



Disclaimer: All information contained therein is gathered from relevant third parties sources.

We cannot guarantee or give any warranty about the information provided. Interested parties must rely solely on their own enquiries.

LJ Hooker Alexandra

(03) 448 8888

Central and Lakes Realty 2008 Ltd



Floor Plan Created By Cubicasa App. Measurements Deemed Highly Reliable But Not Guaranteed.



LJ Hooker Alexandra
(03) 448 8888

Central and Lakes Realty 2008 Ltd

Disclaimer: All information contained therein is gathered from relevant third parties sources.
We cannot guarantee or give any warranty about the information provided. Interested parties must rely solely on their own enquiries.