



Alexandra, 75 Royal Terrace

CHARACTER & CHARM ROLLED INTO ONE

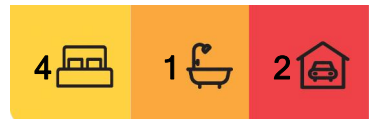
This style of home is seldom found in Alexandra, it's a real beauty that exudes a cosy, charming cottage like feel the moment you enter.

Open plan kitchen, dining, living, two bedrooms, laundry, toilet and bathroom are all downstairs with a further two bedrooms upstairs. A large portion of the home is double glazed, and heating and cooling is provided by a 10kW heat pump ensuring year round comfort.

The kitchen, dining space and back door open out onto a lovely north facing covered porch area that then steps down onto the generous lawn and established gardens.

There is a detached double garage with an extra bay that is lined and insulated, ideal as a workshop, storage area or you could close off as an additional rumpus or the like, plus the additional off-street parking.

Located in a prime position handy to the town's schools and other amenities.



For Sale
\$639,000

View
ljhooker.co.nz/14DAGME

Contact
Donna Bain
0275 815 353
dbain.alexandra@ljhooker.co.nz



Disclaimer: All information contained therein is gathered from relevant third parties sources. We cannot guarantee or give any warranty about the information provided. Interested parties must rely solely on their own enquiries.

LJ Hooker Alexandra
(03) 448 8888
Central and Lakes Realty 2008 Ltd

More About this Property

Property ID	14DAGME
Property Type	House
House Size	181 m ²
Land Area	972 m ²
Including	Toilets (1) Dishwasher Remote Garage

Licensed Real Estate Agents (REAA2008)

Donna Bain 0275 815 353

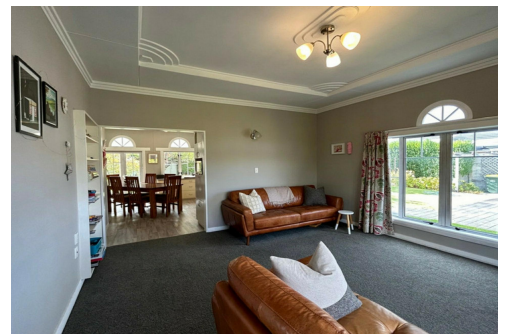
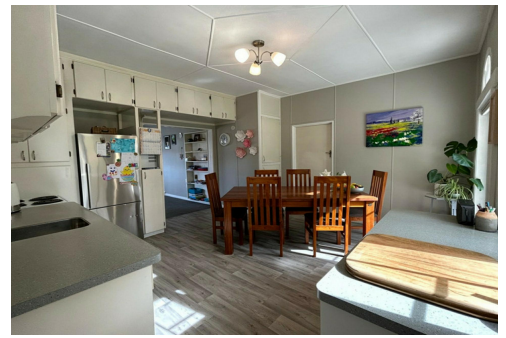
Principal/Licensed Salesperson | dbain.alexandra@ljhooker.co.nz

LJ Hooker Alexandra (03) 448 8888

Central and Lakes Realty 2008 Ltd

10 Centennial Ave, ALEXANDRA 9320

alexandra.ljhooker.co.nz | alexandra@ljhooker.co.nz



**LJ Hooker Alexandra
(03) 448 8888**

Central and Lakes Realty 2008 Ltd

Disclaimer: All information contained therein is gathered from relevant third parties sources.

We cannot guarantee or give any warranty about the information provided. Interested parties must rely solely on their own enquiries.