



## Alexandra, 7 Hawkdun Place

### COMMANDING VIEWS & EXCEPTIONAL FAMILY LIVING

Perched high on the hillside, this beautifully designed home captures expansive views stretching across Alexandra to Leaning Rock and Dunstan Range offering a peaceful, private retreat with room for the whole family.

Cleverly laid out over two levels, the heart of the home is on the main floor, where the sun-filled open plan kitchen, dining and living space invites relaxed everyday living. The spacious kitchen boasts generous bench space, excellent storage and a warm, sunny aspect. A few steps up, the formal lounge provides a more refined space to unwind, with French doors that open to stunning views.

Three bedrooms, a separate study, a full family bathroom with spa bath and a dedicated laundry complete this level. Upstairs, the master suite is a true sanctuary featuring a walk-in robe, ensuite and private deck where you can start or end your day gazing out over the Central Otago landscape.

Outdoors, enjoy beautifully landscaped gardens with schist detailing, sheltered entertaining

4

2

3

**For Sale**  
Set Sale

**View**  
By Appointment

**Contact**  
**Jo Tickle**  
0274 855 701  
jtickle.alexandra@ljhooker.co.nz

**Brenda Griffin**  
022 154 6023  
bgriffin.alexandra@ljhooker.co.nz



**Disclaimer:** All information contained therein is gathered from relevant third parties sources. We cannot guarantee or give any warranty about the information provided. Interested parties must rely solely on their own enquiries.

**LJ Hooker Alexandra**  
**(03) 448 8888**  
Central and Lakes Realty 2008 Ltd

zones and multiple spots to soak in the sun or scenery. A spacious double garage adds to the ease and functionality of the home.

Offering style, comfort, and a setting that's second to none this is a home where every day feels just a little more special.

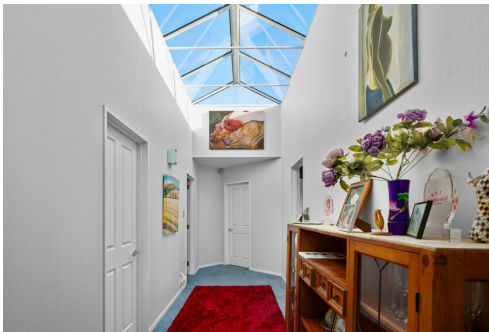
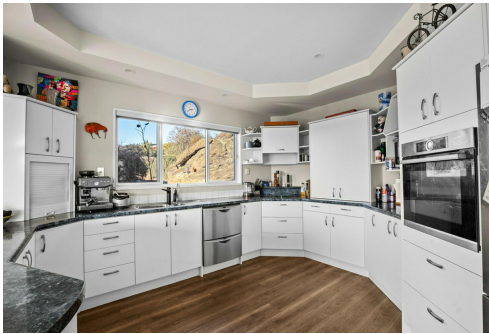
Set Sale Thursday 31 July 2025, 4 pm (unless sold prior)

## More About this Property

Property ID	15TJGME
Property Type	House
House Size	380 m2
Land Area	1782 m2
Including	Dishwasher
Licensed Real Estate Agents (REAA2008)	

**Jo Tickle 0274 855 701**  
Licensed Salesperson | [jtickle.alexandra@ljhooker.co.nz](mailto:jtickle.alexandra@ljhooker.co.nz)  
**Brenda Griffin 022 154 6023**  
Licensed Salesperson | [bgriffin.alexandra@ljhooker.co.nz](mailto:bgriffin.alexandra@ljhooker.co.nz)

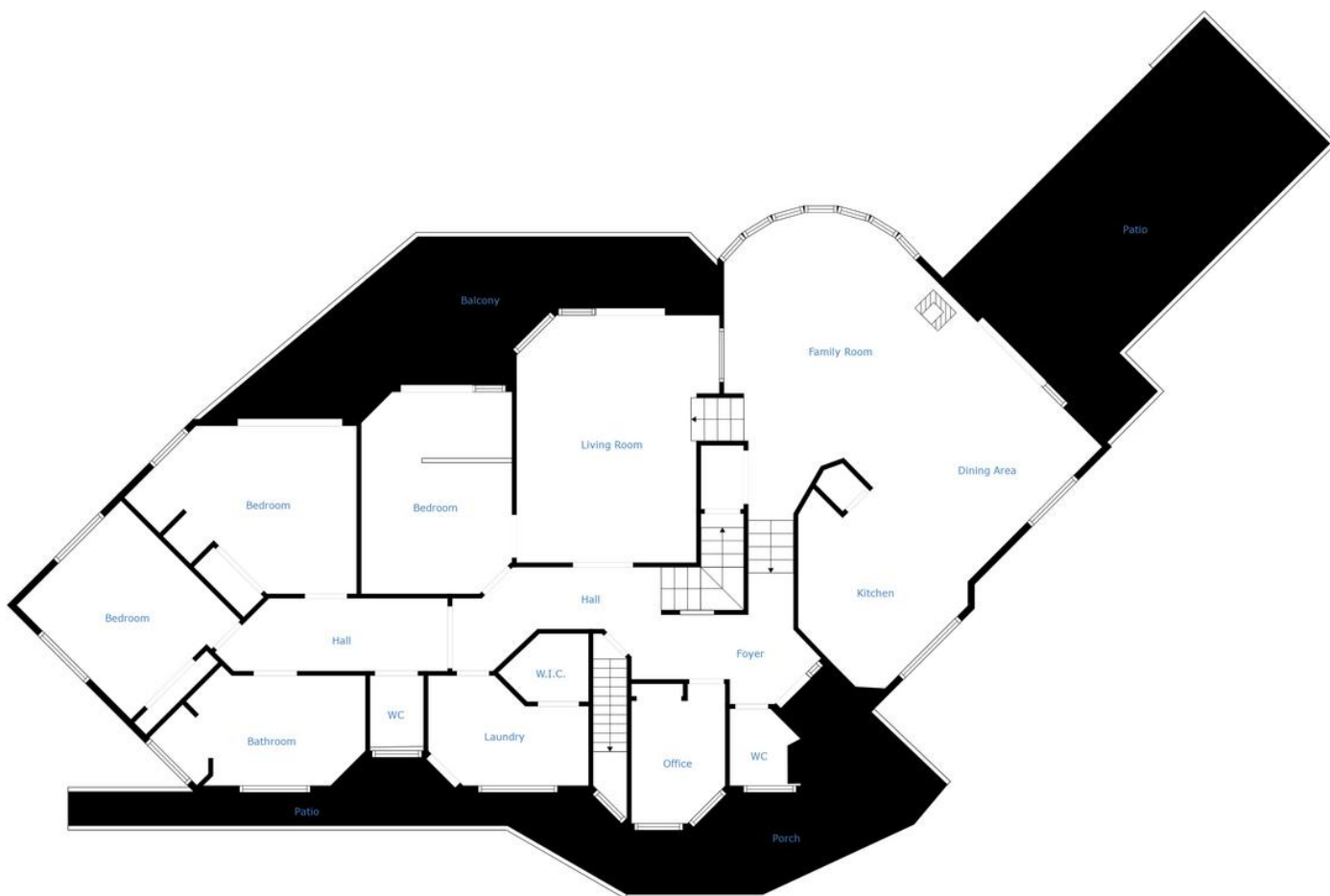
**LJ Hooker Alexandra (03) 448 8888**  
Central and Lakes Realty 2008 Ltd  
10 Centennial Ave, ALEXANDRA 9320  
[alexandra.ljhooker.co.nz](mailto:alexandra.ljhooker.co.nz) | [alexandra@ljhooker.co.nz](mailto:alexandra@ljhooker.co.nz)



**Disclaimer:** All information contained therein is gathered from relevant third parties sources. We cannot guarantee or give any warranty about the information provided. Interested parties must rely solely on their own enquiries.

**LJ Hooker Alexandra**  
**(03) 448 8888**  
Central and Lakes Realty 2008 Ltd





Floor Plan Created By Cubicasa App. Measurements Deemed Highly Reliable But Not Guaranteed.



**Disclaimer:** All information contained therein is gathered from relevant third parties sources.  
We cannot guarantee or give any warranty about the information provided. Interested parties must rely solely on their own enquiries.

**LJ Hooker Alexandra**  
**(03) 448 8888**  
Central and Lakes Realty 2008 Ltd