

Alexandra, 104A Ventry Street

PLENTY TO PLEASE HERE

If you are considering downsizing, then this property is a must view.

The moment the property comes into view up the driveway you can see the double garage and ample off-street parking available within this freehold title.

The Village Stone and plaster cladding is not only attractive but low maintenance too.

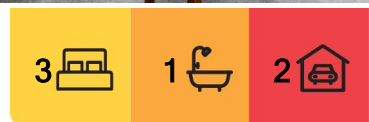
Open plan living greets you as you enter this modern home built in 2007.

It boasts three bedrooms, a dual accessed bathroom, an extra separate toilet plus a formal entranceway.

A very private small lawn and garden space opens off both the living and dining area plus the master bedroom. Ideal in the warmer months.

Located in relatively close proximity to the town's amenities.

Set Sale Tuesday 4 February 2025, 4 pm (unless sold prior)



For Sale
Set Sale

View
l.jhooker.co.nz/15K1GME

Contact
Donna Bain
0275 815 353
dbain.alexandra@l.jhooker.co.nz



Disclaimer: All information contained therein is gathered from relevant third parties sources. We cannot guarantee or give any warranty about the information provided. Interested parties must rely solely on their own enquiries.

LJ Hooker Alexandra
(03) 448 8888
Central and Lakes Realty 2008 Ltd

More About this Property

Property ID	15K1GME
Property Type	House
House Size	160 m2
Land Area	639 m2
Including	Dishwasher

Licensed Real Estate Agents (REAA2008)

Donna Bain 0275 815 353

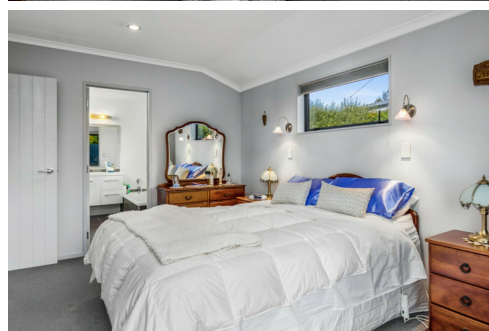
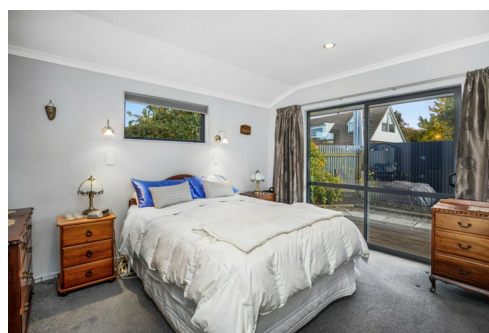
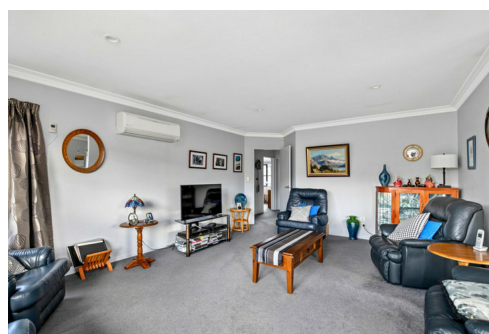
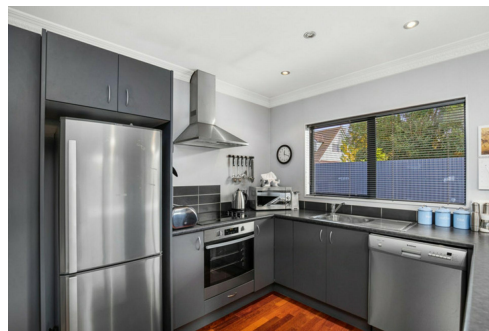
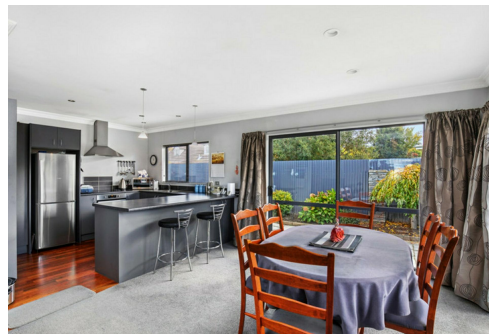
Principal/Licensed Salesperson | dbain.alexandra@ljhooker.co.nz

LJ Hooker Alexandra (03) 448 8888

Central and Lakes Realty 2008 Ltd

10 Centennial Ave, ALEXANDRA 9320

alexandra.ljhooker.co.nz | alexandra@ljhooker.co.nz



Disclaimer: All information contained therein is gathered from relevant third parties sources.

We cannot guarantee or give any warranty about the information provided. Interested parties must rely solely on their own enquiries.

**LJ Hooker Alexandra
(03) 448 8888**

Central and Lakes Realty 2008 Ltd