



25 Seaview Street, Aldinga Beach

## Coastal Charm on a Prime Corner Block - Price Guide \$850,000

Auction Location: on-site

PLEASE NOTE NEW AUCTION DATE: SUNDAY 3RD MAY AT 11.30AM

Just a short walk to cafes, restaurants, and beach access, this original 90s home at 25 Seaview Street, Aldinga Beach, offers a fantastic opportunity to add your personal touches and make it your dream coastal retreat. Set on a large corner block, there's plenty of space for outdoor entertaining, gardening, or future extensions.

### Property Features:

- Separate lounge - perfect for relaxing or entertaining
- 3 generous bedrooms, including master with ensuite
- Ducted cooling and gas heating for year-round comfort
- Excellent shedding - ideal for cars, boats, or a workshop
- Prime location - just moments from beach access, cafes and restaurants

This is your chance to renovate and personalise, this 90s home in

3 2 1

### FOR SALE

Please Call

### AGENTS

John McGarry  
0438 563 588  
jmcgarry.aldinga@ljhooker.com.au

### AGENCY

LJ Hooker Aldinga | Seaford  
(08) 8556 5249

All information contained therein is gathered from relevant third parties sources. We cannot guarantee or give any warranty about the information provided. Interested parties must rely solely on their own enquiries.



one of Aldinga Beach's most sought-after locations. Embrace the coastal lifestyle and make it your own!  
Price guide - \$850,000

## MORE DETAILS

Property ID                    6JJ24  
Property Type                House

**John McGarry 0438 563 588**

Principal | Licencee | [jmcgarry.aldinga@ljhooker.com.au](mailto:jmcgarry.aldinga@ljhooker.com.au)

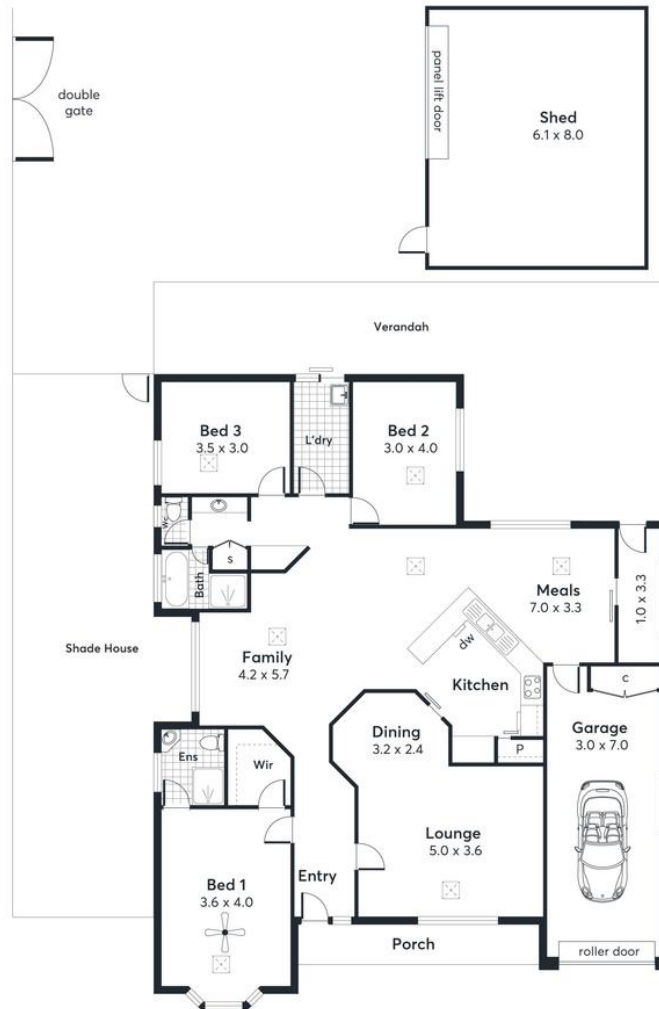
**LJ Hooker Aldinga | Seaford (08) 8556 5249**

80 Aldinga Beach Road, ALDINGA BEACH SA 5173  
[aldinga.ljhooker.com.au](mailto:aldinga.ljhooker.com.au) | [accounts.aldinga@ljhooker.com.au](mailto:accounts.aldinga@ljhooker.com.au)



All information contained therein is gathered from relevant third parties sources.  
We cannot guarantee or give any warranty about the information provided.  
Interested parties must rely solely on their own enquiries.

AREA ( Estimate Only)	
Living:	162.21 m <sup>2</sup>
Garage:	21.00 m <sup>2</sup>
Verandah:	55.45 m <sup>2</sup>
Porch:	6.60 m <sup>2</sup>
Shed/Shade House:	106.49 m <sup>2</sup>
<b>TOTAL:</b>	<b>351.75 m<sup>2</sup></b>



This Drawing is for illustration purposes only.  
 Not To Scale. All measurements are internal and approximate.  
 Details intended to be relied upon should be independently verified.  
 Produced by [Open2view.com](http://Open2view.com)