

Albany Creek, 14 Shearwater Close

CHIC, SHARP & SURE TO IMPRESS

Majestically positioned at the end of a quiet cul-de-sac in an elevated position this beautiful large family home can only be described, inside and out, as "STUNNING". Meticulously cared for and immaculately presented there is no doubt that you will be truly 'wowed' by what is on offer here.

Inside, the home is of generous proportion with multiple living areas catering for all modern-day family needs. The open plan/ family meals area is perfect for everyday living and flows seamlessly inside to out, the central gourmet kitchen with stainless steel appliances & stone benches making this perfect for any budding master chef.

Step outside and be greeted by a soothing ambience under the alfresco dining where privacy is key, entertain family and friends or simply sit back, relax and watch the children splash around in the breathtaking in ground swimming pool.

5

3

2

For Sale
Contact Agent

View
ljhooker.com.au/1TQCF1H

Contact
Wayne Cornell
0410 405 031
wcornell.albanycreek@ljhooker.com.au



Disclaimer: All information contained therein is gathered from relevant third parties sources. We cannot guarantee or give any warranty about the information provided. Interested parties must rely solely on their own enquiries.

LJ Hooker Albany Creek | Warner
(07) 3264 9000

The property is located within a stone's throw to the city bus & park and just a short stroll will take you into the heart of Albany Creek and all it has to offer with White Horse Ranch, Portabella Restaurant, Coles/ local shops, Child Care Centre, Albany Creek State School, Good Shepherd school and the list goes on.

Property Features:

- * 5 bedrooms with built-ins, master bedroom offers walk-in robe and renovated ensuite
- * Rear verandah - shared between 3 bedrooms upstairs
- * Plantation shutters
- * Ducted air conditioning
- * Beautifully renovated chefs' kitchen with a butler's pantry
- * Separate media room
- * Open plan living/ dining
- * Modern Family bathroom with another bathroom downstairs
- * Study nook
- * Internal laundry
- * Inground swimming pool
- * Solar power system
- * Fully fenced backyard
- * Double lockup garage
- * 730m2 block

Disclaimer:

"Information contained on any marketing material, website or other portal should not be relied upon. You should make your own enquiries and seek your own independent advice with respect to any property advertised or the information about the property."

"LJ Hooker Property Connections also offer a property management service. If you're considering renting your property, are looking to buy or would like a free review of your current portfolio, please call our main office on (07) 3264 9000."

More About this Property

Property ID	1TQCF1H
Property Type	House
Land Area	730 m2
Including	Ensuite Study Ducted Cooling Toilets (3) Dishwasher Built-in-Robes Water Tank

Wayne Cornell 0410 405 031

Sales Consultant | wcornell.albanycreek@ljhooker.com.au

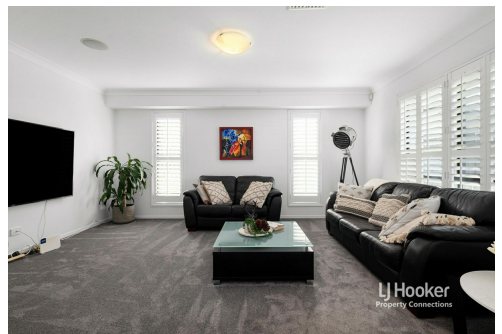
LJ Hooker Albany Creek | Warner (07) 3264 9000

699 Albany Creek Road, ALBANY CREEK QLD 4035

albanycreek.ljhooker.com.au | albanycreek@ljhooker.com.au



Disclaimer: All information contained therein is gathered from relevant third parties sources. We cannot guarantee or give any warranty about the information provided. Interested parties must rely solely on their own enquiries.



LJ Hooker Albany Creek | Warner
(07) 3264 9000



0 1 2 3 4 5 SCALE (METRES)

PLANS SHOWN ONLY INDICATIVE OF LAYOUT. DIMENSIONS ARE APPROXIMATE.

All information contained herein is gathered from sources we believe to be reliable. However we cannot guarantee its accuracy and interested persons should rely on their own enquiries.

internal	297sqm
external	41sqm
total	338sqm



14 SHEARWATER CLOSE

Created by RealScope®
www.realscope.com.au