

24 McLaren Street, Adelaide

A Storybook 1880 Stone Cottage - Rich in History, Warmth & Charm

Auction Location: onsite

McLaren Street stands among Adelaide's most enchanting and tightly held residential streets, admired for its collection of late-19th-century cottages and terraces that showcase the city's early architectural character. Homes dating from the 1880s and 1890s line this intimate streetscape, creating a village-like atmosphere rich in heritage and community spirit within the sought-after East End.

Behind a storybook facade, this beautiful circa 1880 stone cottage with rendered quoins at 24 McLaren Street captures the warmth and romance of a bygone era. A classic verandah with white picket fence frames the entrance, offering a welcoming place to enjoy a quiet morning coffee or relaxed evening retreat. The original stonework and charming street presence blend effortlessly into the leafy, character-filled surroundings.

Inside, classic character blends with modern updates. Key improvements are already in place, making the home immediately

2 🏠 1 🚿 1 🚗

FOR SALE

Sold by Janine Bergin LJ Hooker Kensington|Unley

AGENTS

Janine Bergin
0417 893 453
jbergin@ljhkensingtonunley.com.au

AGENCY

LJ Hooker Kensington | Unley
(08) 8431 6088

All information contained therein is gathered from relevant third parties sources. We cannot guarantee or give any warranty about the information provided. Interested parties must rely solely on their own enquiries.



liveable, with further scope to personalise while retaining its heritage features.

Features you will love:

- A light-filled lounge room for comfortable living
- An updated white gloss kitchen with Miele appliances, dishwasher and pull-out pantry, flowing into the adjoining dining area featuring a shaker-style panelled feature wall and a character laden fireplace with mantel.
- Two generous bedrooms, with the main featuring a clever false wall divider that creates a walk-in robe behind the bed.
- An updated bathroom with scope to further enhance and personalise
- Soaring ceilings, some with decorative ceiling roses, that enhance space and character
- Ducted reverse cycle air conditioning throughout for year-round comfort, complemented by a kitchen split system and remote controlled ceiling fans in every room.
- Stylish plantation shutters on all windows
- Polished boards in the hallway, bedroom 2 and the kitchen/dining area
- Convenient laundry off the kitchen with easy access to the clothesline.

The north facing rear garden is private and drought tolerant, offering both versatility and security. It can be converted to off-street parking for one vehicle via automatic sliding gates, with convenient side-lane pedestrian access. A dedicated rear storeroom provides practical storage, while a screened utility area discreetly conceals the clothesline, water tank with drip filter line, and air conditioning unit.

Modern sustainability features include solar panels with battery storage generating surplus energy in three out of four quarters, an EV charging station, draft excluders on all main doors and windows, Level 6 ceiling insulation, and an insulated rear verandah with wind-down blinds. Energy usage and systems can be monitored via the iSolar cloud and Airtouch5 apps.

This cottage perfectly balances period charm with contemporary comfort. Ideally positioned moments from Hutt Street's vibrant cafes, nearby parklands and the CBD, McLaren Street remains highly prized for its rare combination of historic beauty and inner-city convenience. A captivating opportunity to secure a piece of Adelaide's past - and make it uniquely yours.

AUCTION: Friday 13 March at 12:30pm, on site

(\$1,150,000)

CT: Volume 5876 Folio 366
Council: Adelaide City Council
Council Rates: \$2,512.90 per annum (approx.)
Water Rates: \$228.33 per quarter (approx.)
Land Size: 177 square metres (approx.)
Year Built: 1880 (approx.)

To register interest, copy and paste the below link into your browser:

<https://prop.ps//Dq3wx1RKreK5>

The Vendor's Statement (Form 1) will be available for perusal by members of the public:-

(A) at the office of the agent for at least 3 consecutive business days immediately preceding the auction; and

(B) at the place at which the auction is to be conducted for at least 30 minutes immediately before the auction commences.

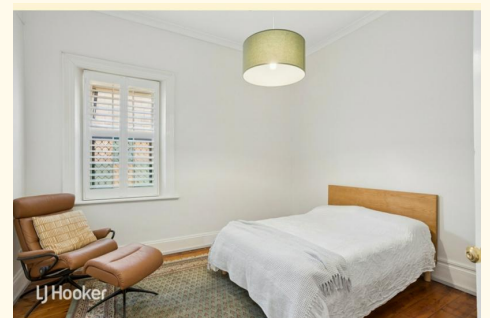
RLA 275279

MORE DETAILS

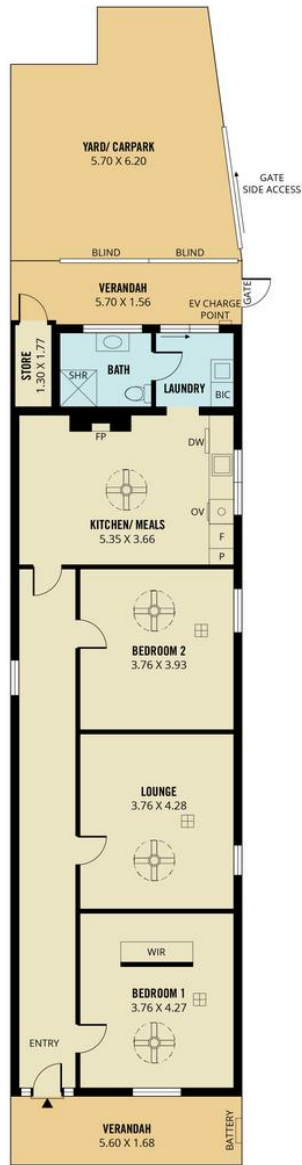
Property ID 61NEFDJ
Property Type House
House Size 155 m2
Land Area 177 m2
Including Air Conditioning
Dishwasher
Floorboards
Solar Panels

Janine Bergin 0417 893 453
Sales Consultant | jbergin@ljhkensingtonunley.com.au

LJ Hooker Kensington | Unley (08) 8431 6088
295 Kensington Road, KENSINGTON PARK SA 5068
kensingtonunley.ljhooker.com.au |
reception@ljhkensingtonunley.com.au



All information contained therein is gathered from relevant third parties sources.
We cannot guarantee or give any warranty about the information provided.
Interested parties must rely solely on their own enquiries.



155m²
TOTAL

107m²
Living

18m²
Verandah

30m²
Yard/
Carpark



Scale in metres. This drawing is for illustration purposes only. All measurements are approximate and details intended to be relied upon should be independently verified.

Produced by The Fotobase Group

All information contained therein is gathered from relevant third parties sources. We cannot guarantee or give any warranty about the information provided. Interested parties must rely solely on their own enquiries.