

## Adelaide, 603/17 Penny Place

Sold by Justin Li



Proudly sitting in the sought-after Penny Place complex, this majestic two-bedroom apartment incorporates thoughtful design and a commitment to high-end fixtures and fittings. If stylish living, combined with an enviably convenient location, are what you're after, this contemporary gem is a solid investment choice.

The impeccable design and unfaltering commitment to excellence are evident as you enter. 2.6-metre-high ceilings give an instant impression of spaciousness, compounded by the masses of natural light infiltrating the glass doors.

The apartment is centred around an open-plan design, with the gourmet kitchen, dining and family areas seamlessly melding into one another. Weather-proof sliding glass doors led out to one of the two balconies, where the stunning Adelaide Hill views provide a pleasant backdrop to your day-to-day life.

**For Sale**

\$630,000 - \$670,000

**View**

[ljhooker.com.au/2AMTFDZ](http://ljhooker.com.au/2AMTFDZ)

**Contact**

**Justin Li**

0422 221 162

[Justin.Li@ljhadelaidemetro.com.au](mailto:Justin.Li@ljhadelaidemetro.com.au)

**Doris He**

0423 707 585

[Doris.He@ljhadelaidemetro.com.au](mailto:Doris.He@ljhadelaidemetro.com.au)



**LJ Hooker St Peters**  
**(08) 8362 8008**

**Disclaimer:** All information contained therein is gathered from relevant third parties sources.

We cannot guarantee or give any warranty about the information provided. Interested parties must rely solely on their own enquiries.

The gourmet kitchen has Caesarstone benchtops, a glass splashback, a stainless-steel Bosch four-burner gas cooktop, Bosch multifunction oven and a Fisher & Paykel integrated dishwasher. There's also ample cabinetry and bench space for your culinary adventures. Characterised by a neutral colour palette and a generous atmosphere, the entertainer in you will fall in love with this space.



The two bedrooms are both substantial in size, each featuring lush carpeting, built-in-robos and air-conditioning. Each one has sliding door access to the balcony, allowing for maximum enjoyment of the views. One of the bedrooms is serviced by a modern ensuite with shower, toilet, vanity and a massive overhang shelf. There is another fully equipped bathroom. A European laundry is a handy touch too.



The unit enjoys the communal use of an indoor lounge and a gourmet chef kitchen. Its location is impeccable. Consider the following advantages:

- Allocated car space on level 4 at city centre.
- Just a two-minute walk from the tram line and Central Market.
- Incredible facilities are within easy reach, such as Calvary Adelaide Hospital and Rundle Mall.
- The electric vibe of the cafes and restaurants on Hutt Street are nearby.
- It's zoned for Zoned for Adelaide Botanic High School and Adelaide High School, and Pulteney Grammar School is close too.



A savvy investment or a comfortable, convenient place to live, this special apartment won't be on the market long. Get in touch today.

\*\* All information provided has been obtained from sources we believe to be accurate, however, we cannot guarantee the information is accurate and we accept no liability for any errors or omissions (including but not limited to a property's land size, floor plans and size, building age and condition). Interested parties should make their own enquiries and obtain their own legal advice.



RLA 61345 RLA 282965 RLA 231015

## More About this Property

Property ID	2AMTFDZ
Property Type	Apartment

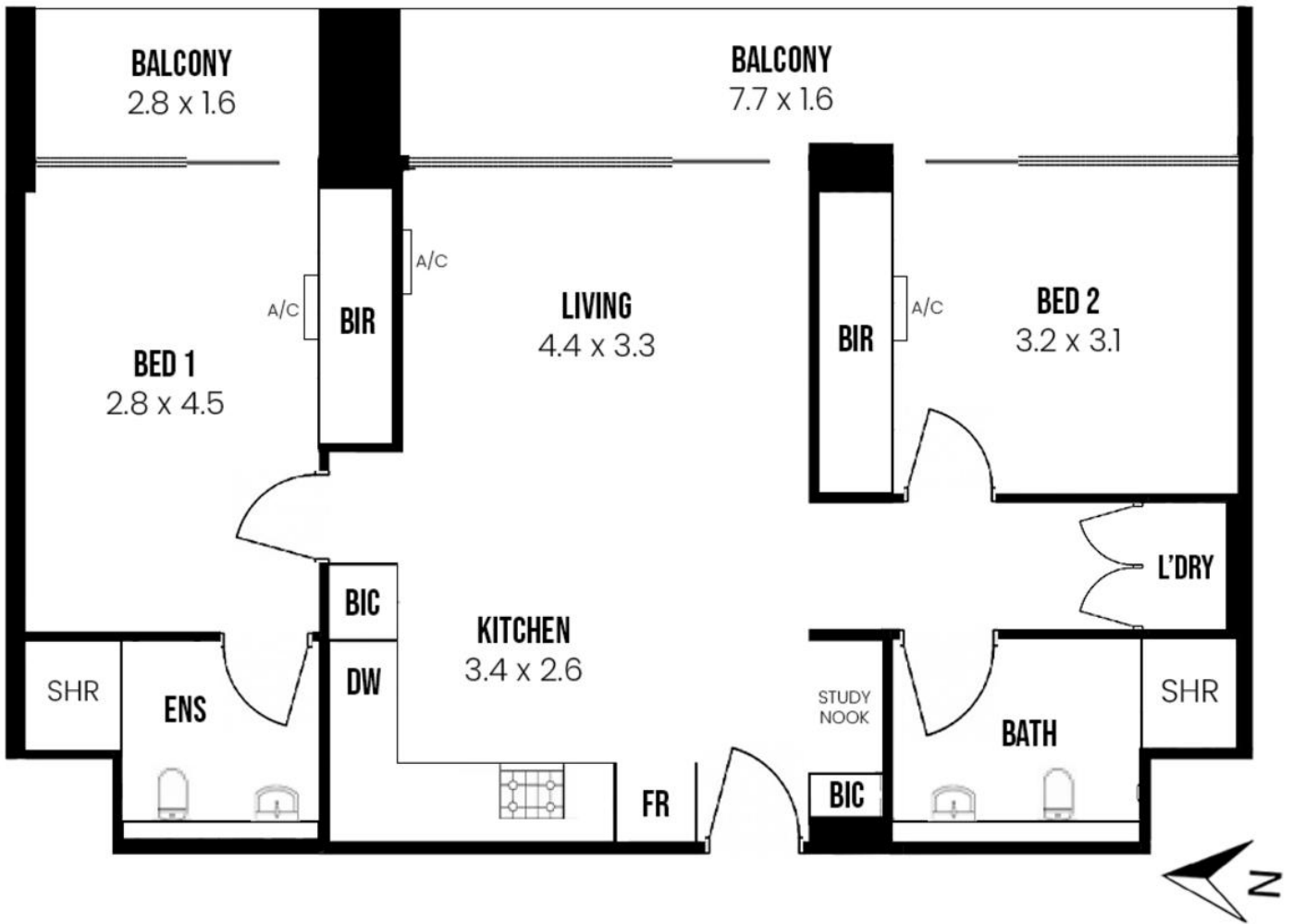
**Justin Li**  
Sales Manager | Justin.Li@ljhadelaidemetro.com.au  
**Doris He**  
Sales Consultant | Doris.He@ljhadelaidemetro.com.au

**LJ Hooker St Peters (08) 8362 8008**  
2a Portrush Road, PAYNEHAM SA 5070  
stpeters.ljhooker.com.au | stpeters@ljhadelaidemetro.com.au



**LJ Hooker St Peters**  
**(08) 8362 8008**

**Disclaimer:** All information contained therein is gathered from relevant third parties sources. We cannot guarantee or give any warranty about the information provided. Interested parties must rely solely on their own enquiries.



**603/17 Penny Place, Adelaide, SA 5000**

**Disclaimer:** The information & figures obtained within this document has been compiled from information provided by vendor & sources that we believe are reliable. No warranty is given to their accuracy & all figures are subject to change without notice.