


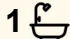
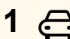


29 Madden Street, Acton

## Acton This Quick

Positioned close to schools, sports ground, shops and transport this three bedroom home will suit investors, first home buyers or even downsizers. Featuring three bedrooms, two with built-in robes, a functional bathroom and separate toilet. There is a separate dining area and lounge room. The choice of heating to keep the home comfortable includes two reverse cycle air-conditioners and a gas heater. The back yard is quite flat for an elevated position and there is a large deck on the back of the property for entertaining, it even has water glimpses. A car port off the side and under house storage are extra bonuses. There are Hardwood timber floors in one of the bedrooms and there would be throughout the house under the floor coverings.

- The information contained herein has been supplied to us by sources which are considered reliable and we have no reason to doubt its accuracy. However, all interested parties should make their own enquiries to verify this information to be correct. All measurements are approximate and are for illustrative purposes only.

3  1  1 

### FOR SALE

Offers Over \$470,000

### VIEW

By Appointment

### AGENTS

Michael Ziegler  
0409 764 219  
michael.ziegler@ljhooker.com.au

Tyla Pyke  
0439 228 888  
tyla.pyke@ljhooker.com.au

### AGENCY

LJ Hooker Devonport  
0473 104 200

## MORE DETAILS

Property ID 8TJHVM  
Property Type House  
Land Area 696 m2

**Michael Ziegler 0409 764 219**

Licensee | michael.ziegler@ljhooker.com.au

**Tyla Pyke 0439 228 888**

Property Representative | tyla.pyke@ljhooker.com.au

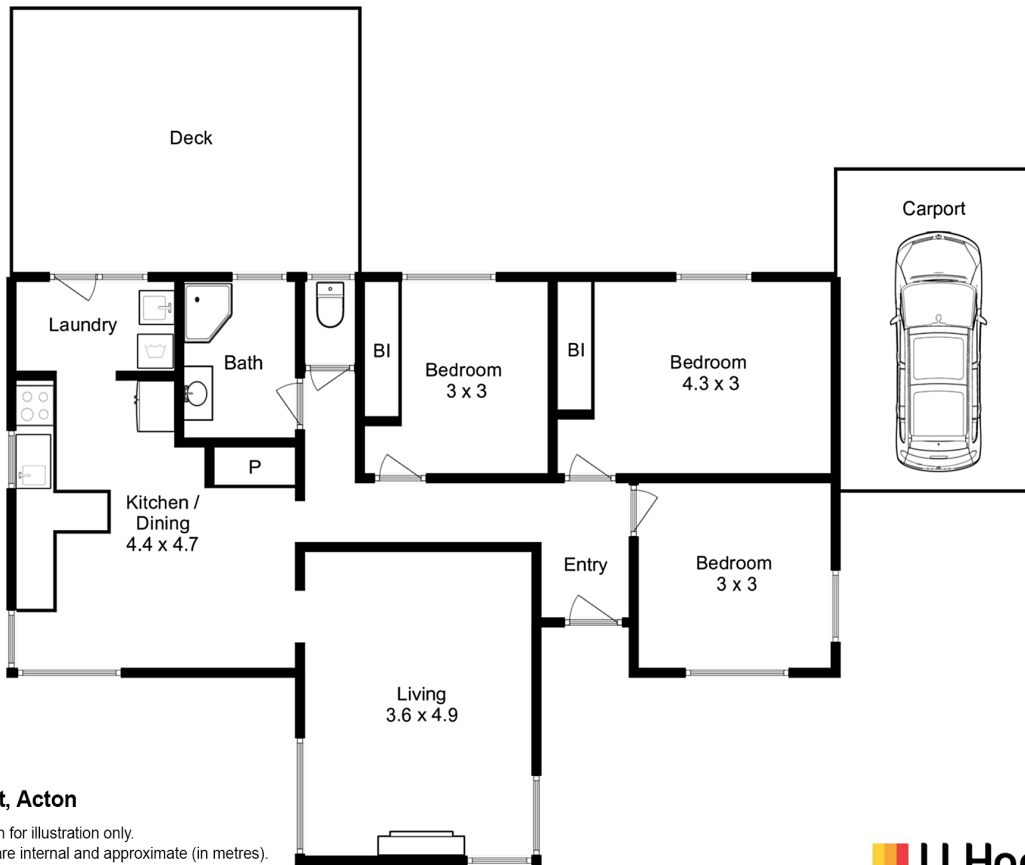
**LJ Hooker Devonport 0473 104 200**

16 Don Road, DEVONPORT TAS 7310

devonport.ljhooker.com.au | devonport@ljhooker.com.au



All information contained therein is gathered from relevant third parties sources.  
We cannot guarantee or give any warranty about the information provided.  
Interested parties must rely solely on their own enquiries.



**29 Madden St, Acton**

This plan is a sketch for illustration only.  
 All measurements are internal and approximate (in metres).  
 Outbuildings / exterior elements not in actual position.

