



Aberglasslyn, 6A Honeysuckle Drive

COMPLETE YOUR NEXT STEP FORWARD!

Welcome to your next best investment in the heart of Maitland's sought-after McKeachies Run Estate! Kane Bradley at LJ Hooker Maitland proudly presents this 3-bedroom freestanding solid brick home, tailor-made for contemporary living. Whether for the owner occupier or investor this property will meet your needs for your future growth.

Step into spacious living as you explore the expansive open-plan layout, seamlessly integrating meals and living areas for effortless entertaining. The focal point? A sleek laminate kitchen boasting ample bench and cupboard space, ideal for culinary adventures.

Experience the epitome of relaxation in generously proportioned bedrooms, each adorned with built-in robes and ceiling fans for ultimate comfort. The master bedroom reigns supreme with its own ensuite.

No detail overlooked, as this home embraces modern upgrades including plantation

3

2

2

For Sale
\$645,000

View
ljhooker.com.au/1D68F6H

Contact
Kane Bradley
0423 525 335
kbradley.maitland@ljhooker.com.au



Disclaimer: All information contained therein is gathered from relevant third parties sources. We cannot guarantee or give any warranty about the information provided. Interested parties must rely solely on their own enquiries.

LJ Hooker Maitland
(02) 4933 5511

shutters and downlights, elevating the ambiance to new heights. Stay cool year-round with ducted air conditioning, ensuring comfort in every corner.

Nestled on a tranquil corner allotment, this property showcases meticulous landscaping, complete with lush shade trees and shrubs, creating an idyllic outdoor oasis. Enjoy the convenience of easy access to the double garage, providing all-weather entry to your abode.

Don't miss the opportunity to make this stunning residence your own! For further details or to arrange a viewing, contact Kane Bradley directly at 0423525335 or email kbradley.maitland@ljhooker.com.au.

Your dream home awaits in McKeachies Run Estate - seize the chance to turn your real estate aspirations into reality today!

All information contained herein is gathered from sources we deem to be reliable. However, we cannot guarantee its accuracy and interested persons should rely on their own enquiries.

More About this Property

Property ID	1D68F6H
Property Type	House
Including	Ensuite Air Conditioning Built-in-Robes Close to Schools Close to Shops Close to Transport Window Treatments

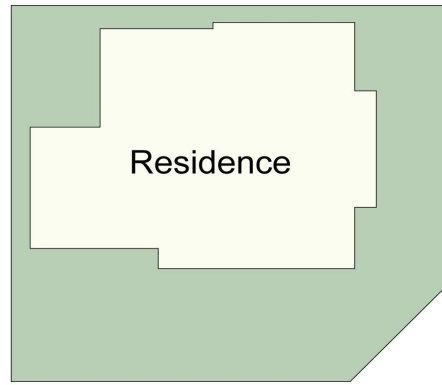
Kane Bradley 0423 525 335
Director | kbradley.maitland@ljhooker.com.au

LJ Hooker Maitland (02) 4933 5511
24 Ken Tubman Drive, MAITLAND NSW 2320
maitland.ljhooker.com.au | maitland@ljhooker.com.au

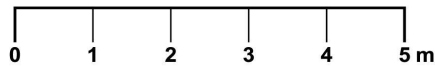
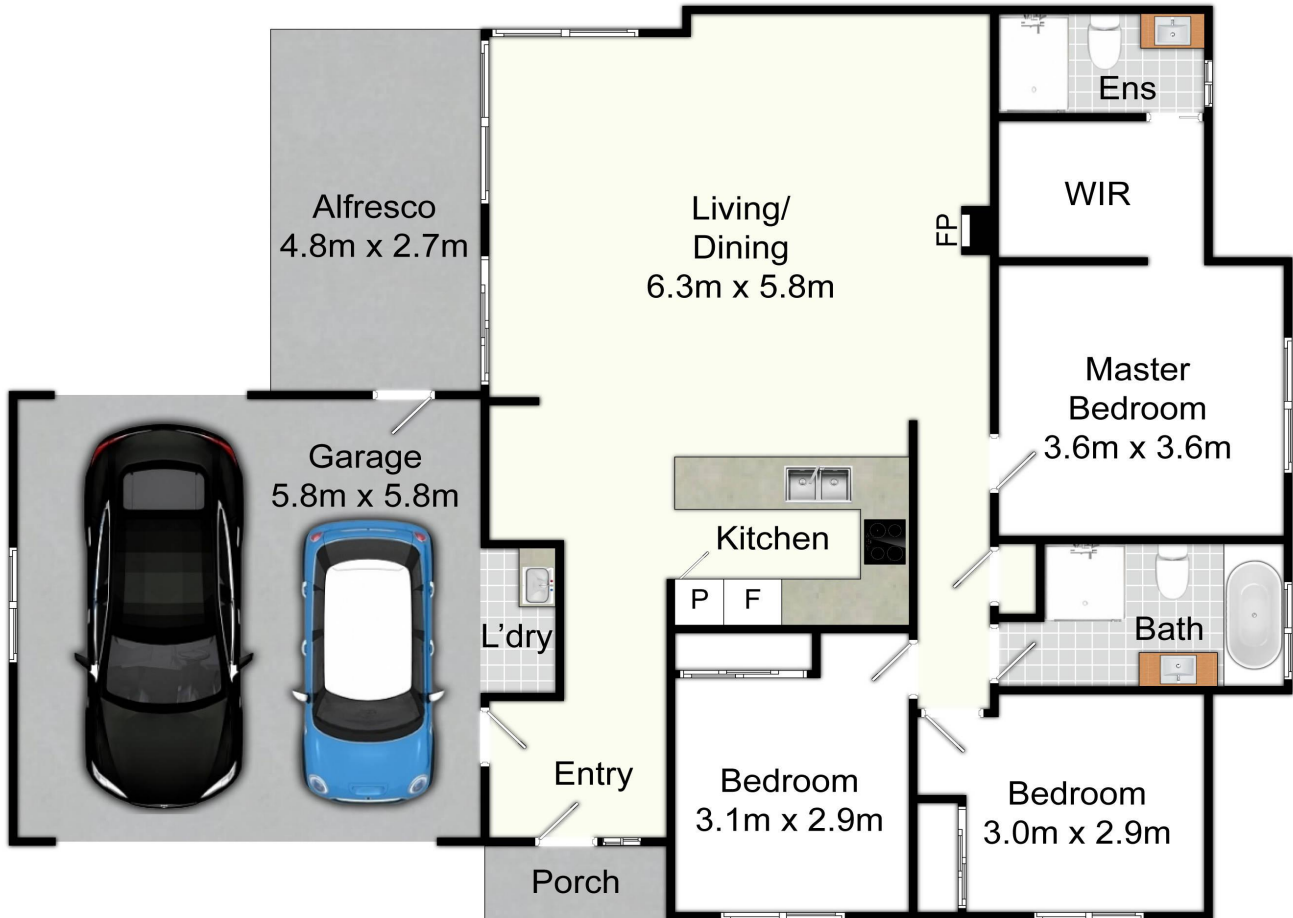


Disclaimer: All information contained therein is gathered from relevant third parties sources. We cannot guarantee or give any warranty about the information provided. Interested parties must rely solely on their own enquiries.

LJ Hooker Maitland
(02) 4933 5511



Site Plan
Not To Scale



6A Honeysuckle Dr, Aberglasslyn

All information contained herein is gathered from sources we deem reliable. However, we cannot guarantee its accuracy and act as a messenger only in passing on the details. Interested parties should rely on their own inquiries and the contract for sale. The floor plans are artist's impressions only. The site plan is not to scale.

LJ Hooker
Maitland

LJ Hooker

LJ Hooker Maitland
(02) 4933 5511

Disclaimer: All information contained therein is gathered from relevant third parties sources. We cannot guarantee or give any warranty about the information provided. Interested parties must rely solely on their own enquiries.