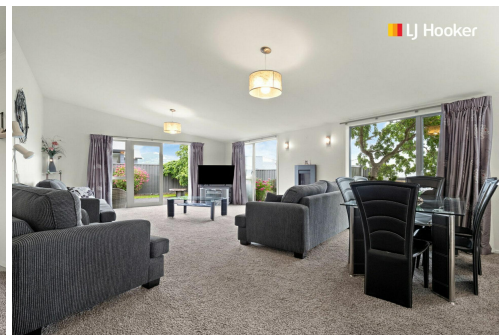
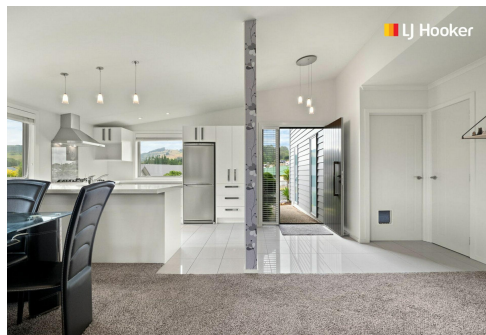


SOLD



Abbotsford, 38 Severn Street

Looking to Downsize in Style?

A rare find situated in Grandvista subdivision, this modern and spacious two-bedroom home offers the ideal chance to downsize or secure an easy-care town base. Built in 2012, on what is now a nicely established 492m² section, the property offers a beautifully elevated position, all-day sunshine, and epitomises a low-maintenance lifestyle.

With approximately 140m² of floor space, both double bedrooms have built-in wardrobes and the living area opens out onto the fully fenced courtyard which has just enough section for those not ready to sacrifice a garden with their next purchase. Astute buyers will recognise how hard it is to locate a modern, stand-alone property in this location that offers contemporary features, great storage and a double garage with internal access. Sure to be popular so don't delay, get in touch today!

2 

1 

2 

For Sale
Negotiation

View
ljhooker.co.nz/3PHEGDS

Contact
Jason Hynes
021 225 5527
Jason@ljhdunedin.co.nz
Lawrence Schaumann
027 418 6204
lawrence@ljhdunedin.co.nz

More About this Property

Property ID	3PHEGDS
Property Type	House
Land Area	492 m2
Licensed Real Estate Agents (REAA2008)	

Jason Hynes 021 225 5527

Managing Director / Licensee / Auctioneer | Jason@ljhdunedin.co.nz

Lawrence Schaumann 027 418 6204

Licensee | lawrence@ljhdunedin.co.nz

LJ Hooker Dunedin (03) 470 1370

Wayne Graham Realty Ltd

63 Musselburgh Rise, DUNEDIN 9013

dunedin.ljhooker.co.nz | dunedin@ljhdunedin.co.nz



Disclaimer: All information contained therein is gathered from relevant third parties sources.

We cannot guarantee or give any warranty about the information provided. Interested parties must rely solely on their own enquiries.

LJ Hooker Dunedin

(03) 470 1370

Wayne Graham Realty Ltd