

Zillmere, 6 Daffodil Close

MORE THAN MEETS THE EYE IN ZILLMERE!

Ideally located and beautifully presented in a family friendly area just a stones throw from schools, parks and transport, this house is ready for you to make home!

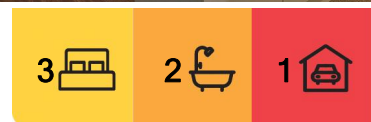
****Rent for this property will begin at \$600 per week until the 20/05/2025 and will then increase to \$650 per week as advertised****

Features include:

- * Master bedroom with built-in robes and ensuite
- * Second and third bedrooms both with fans and built-in robes
- * Separate lounge room with ceiling fan
- * Dining room with accessibility to rear outdoor patio
- * Open plan casual family room with sliding door access to rear patio
- * Practical kitchen with plenty of cupboard and bench space
- * Main bathroom with separate bath and shower



Disclaimer: All information contained therein is gathered from relevant third parties sources. We cannot guarantee or give any warranty about the information provided. Interested parties must rely solely on their own enquiries.



For Lease
\$650 per week

View
Sat 11th Jan @ 11:30AM - 11:45AM

Contact
Bella Garside
office.aspley@ljhooker.com.au

LJ Hooker Aspley | Chermide
(07) 3263 6022

- * Private undercover entertainment area
- * Secure lock-up garage
- * Laundry in garage
- * NBN Connected
- * Fully fenced private back yard

Would you like to view this property?

Go directly to <https://aspley.ljhooker.com.au> to register to inspect.

PLEASE NOTE, if you do not register online, we cannot notify you of any time changes or cancellations to inspections.

To apply please submit an online application form by copying and pasting the following link into your internet browser.

https://app.inspect***/External/ROL/QuickWeb.aspx?AgentAccountName=LJHASpley&HidePrice=&UsePriceView=&HideAppOffer=&Sort=&HideLogo=

Alternatively you can download and print our application by visiting our website - <https://aspley.ljhooker.com.au/getattachment/renting/tenant-forms/Application.pdf.aspx?lang=en-AU>

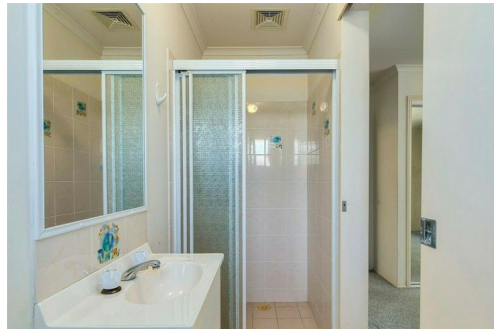
All information contained herein is gathered from sources we consider to be reliable. However, we cannot guarantee or give any warranty about the information provided. Interested parties must solely rely on their own enquiries.

More About this Property

Property ID	397VF1R
Property Type	House
Including	Toilets (2) Courtyard Built-in-Robes Fully Fenced

Bella Garside
Receptionist | office.aspley@ljhooker.com.au

LJ Hooker Aspley | Chermside (07) 3263 6022
1359 Gympie Road, ASPLEY QLD 4034
aspley.ljhooker.com.au | aspley@ljhooker.com.au



Disclaimer: All information contained therein is gathered from relevant third parties sources. We cannot guarantee or give any warranty about the information provided. Interested parties must rely solely on their own enquiries.

LJ Hooker Aspley | Chermside
(07) 3263 6022



6 Daffodil Close, Zillmere



FLOOR AREA SIZES

Internal 112m² | External 18m² | Garage 27m²

TOTAL 157m²

Whilst every attempt has been made to ensure the accuracy of the floor plans contained here, measurements of doors, windows, rooms and any other items are approximate and no responsibility is taken for any error, omission or misstatement.

These plans are for representation purposes only. Provided by primegw.com.au