

## Wollongong, 3/27 Mercury Street

The size with surprise!

Conveniently located on the city fringe and only moments to CBD, Hospital, public transport and much more is this large 2 bedroom unit. Without a doubt, its biggest feature is the huge outdoor terrace style courtyard which is shrouded by trees for privacy and is perfect for entertaining.

- Good size bedrooms both with BIW's
- Large open plan living/dining
- Huge kitchen with ample cupboard space & breakfast bar
- Big bathroom with separate shower & bath
- Single car space
- Secure building
- Small quiet complex
- An inspection is sure to impress. Hesitate and miss out!



**For Lease**  
Please Call

**View**  
[ljhooker.com.au/QPCHQZ](http://ljhooker.com.au/QPCHQZ)



**Disclaimer:** All information contained therein is gathered from relevant third parties sources. We cannot guarantee or give any warranty about the information provided. Interested parties must rely solely on their own enquiries.

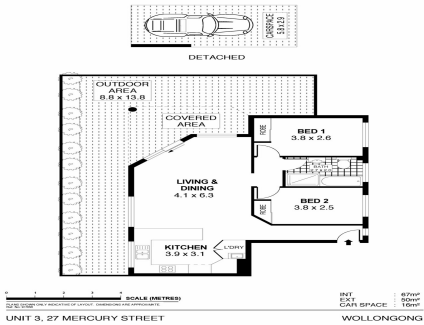
**LJ Hooker Wollongong | Corrimal | Shellharbour**  
**(02) 4229 8600**

**\*\* Applications submitted prior to physically viewing the property will NOT be processed until a physical inspection has been conducted.**

## More About this Property

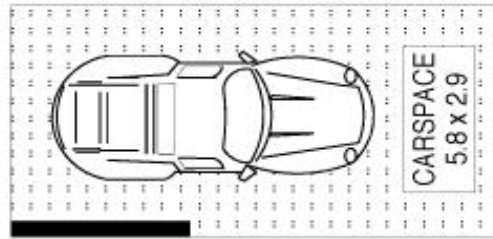
Property ID	QPCHQZ
Property Type	Unit

**LJ Hooker Wollongong | Corrimal | Shellharbour (02) 4229 8600**  
69 Kembla Street, WOLLONGONG NSW 2500  
wollongong.ljhooker.com.au | wollongong@ljhooker.com.au

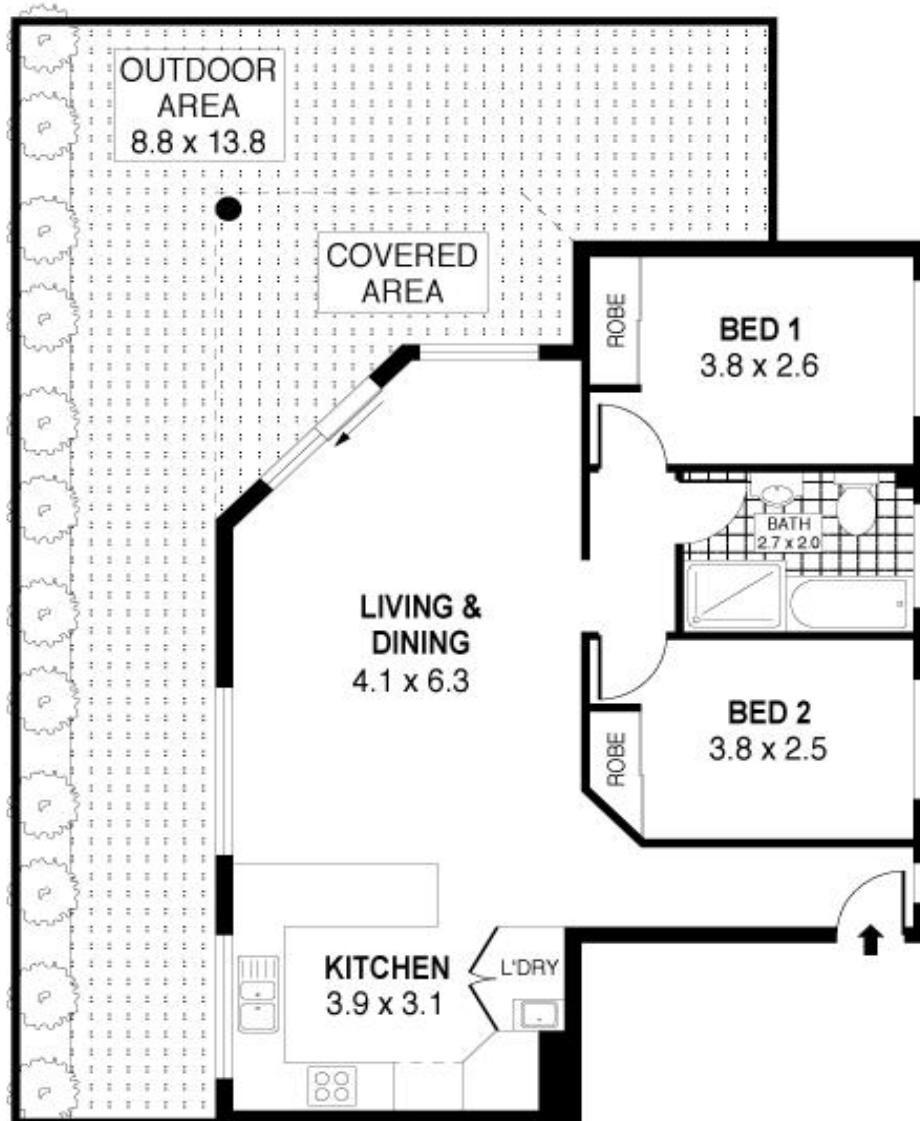


**Disclaimer:** All information contained therein is gathered from relevant third parties sources. We cannot guarantee or give any warranty about the information provided. Interested parties must rely solely on their own enquiries.

**LJ Hooker Wollongong | Corrimal | Shellharbour (02) 4229 8600**



DETACHED



0 1 2 3 4  
SCALE (METRES)

PLANS SHOWN ONLY INDICATIVE OF LAYOUT. DIMENSIONS ARE APPROXIMATE.  
Ref. No. 91556

INT : 67m<sup>2</sup>  
EXT : 50m<sup>2</sup>  
CAR SPACE : 16m<sup>2</sup>

UNIT 3, 27 MERCURY STREET

WOLLONGONG



LJ Hooker Wollongong | Corrimal |  
Shellharbour  
(02) 4229 8600

**Disclaimer:** All information contained therein is gathered from relevant third parties sources.  
We cannot guarantee or give any warranty about the information provided. Interested parties must rely solely on their own enquiries.