

Wolli Creek, 504/10-12 Allen Street

Conveniently Located 3 Bedroom Penthouse Apartment

This property offers an open plan living and dining area which leads onto an expansive East, South and Westerly facing balcony, stretching the length of the apartment and accessible from the living room, this outdoor zone is spacious and is perfect for accommodating guests with fantastic views of the city skyline.

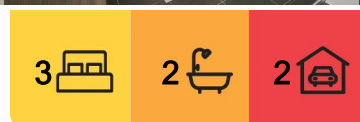
This property brings a fresh new dynamic to Wolli Creek. Being in such an ideal location this property is in the heart of all amenities being a short stroll to Wolli Creek and Arncliffe train stations, food outlets, schools and parks.

Features include:

- Top floor penthouse apartment
- 3 large bedrooms with built-in robes, main with en suite and air conditioning in each room
- Spacious open plan lounge and dining area with air-conditioning
- Modern kitchen with breakfast bar, stone bench tops



Disclaimer: All information contained therein is gathered from relevant third parties sources. We cannot guarantee or give any warranty about the information provided. Interested parties must rely solely on their own enquiries.



For Lease

\$1,125 Per Week

View

Thu 24th Jul @ 5:15PM - 5:30PM

Contact

Alexandra McPartland

0449 022 720

alex@ljha.com.au

LJ Hooker Ashfield
(02) 9797 6044

- 270 Degree Wrap around balcony with city views
- Concrete tiled floors throughout
- Sparkling tiled, modern bathrooms
- Boutique and secure building
- LED down lights throughout
- 2 Secure Car spaces
- Close to Arncliffe Station and Wolli Creek Station
- Close to Woolworth shopping and nearby cafes
- Close to Sydney Airport, only 1 stop away on the train
- Close to Sydney CBD, only 3 stops away on the train

This 3 bedroom penthouse apartment is one you can't miss out on

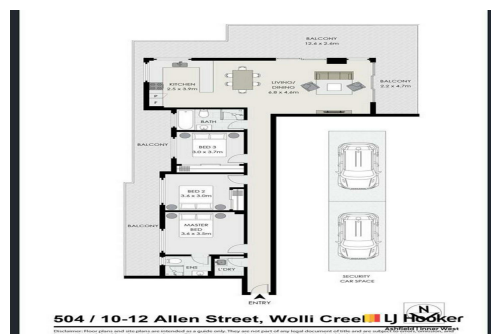
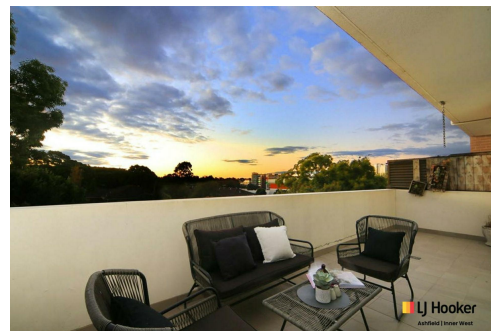
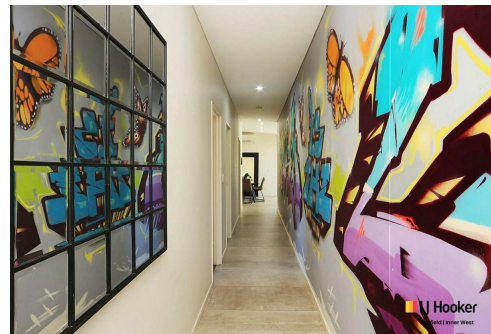
DISCLAIMER: This advertisement contains information provided by third parties. While all care is taken to ensure otherwise, LJ Hooker Ashfield does not make any representation as to the accuracy of the information contained in the advertisement, does not accept and responsibility or liability and recommends that any client make their own investigations and enquiries. All images are indicative of the property only.

More About this Property

Property ID	194YF8B
Property Type	Apartment

Alexandra McPartland 0449 022 720
Property Investment Co-ordinator | alex@ljha.com.au

LJ Hooker Ashfield (02) 9797 6044
216 Liverpool Road, ASHFIELD NSW 2131
ashfield.ljhooker.com.au | ashfield@ljha.com.au



Disclaimer: All information contained therein is gathered from relevant third parties sources. We cannot guarantee or give any warranty about the information provided. Interested parties must rely solely on their own enquiries.

LJ Hooker Ashfield
(02) 9797 6044