

2D Trundle Terrace, Whitfield

TROPICAL LIVING !!!!

Single level, open spaces and views to the CBD, mountains and ocean makes this residence the ultimate contemporary retreat for the new tenants seeking to secure a relaxed tropical lifestyle.

Promoting a casual and calm lifestyle with open plan living and dining area, stunning central kitchen with stone bench tops, stainless steel appliances and island bench with breakfast bar

This property is partly furnished for your convenience and features 4 bedrooms with the master bedroom suite is positioned privately away from other bedrooms and is the ideal sanctuary to retire to with walk-in-robe, ensuite and private deck with direct access to the pool.

- Main bathroom with bathtub and separate shower.
- 13.32KW Solar System
- Pool Maintenance included (tenant to pay chemicals)
- Periodic garden maintenance completed
- Pets considered upon application
- Air conditioning
- Double car port

4  2  2 

FOR RENT

\$1,500 wk

VIEW

By Appointment

AGENTS

Jazmin Glazebrook
0477 393 633
m6@ljheh.com.au

AGENCY

LJ Hooker Cairns Edge Hill
(07) 4053 9999

All information contained therein is gathered from relevant third parties sources.
We cannot guarantee or give any warranty about the information provided.
Interested parties must rely solely on their own enquiries.

 LJ Hooker

MORE DETAILS

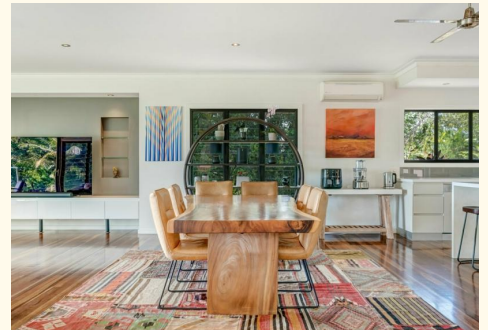
Property ID 3YMUFMB
Property Type House
Including Air Conditioning
Pool
Deck
Built-in-Robes

Jazmin Glazebrook 0477 393 633

Senior Property Manager | Business Development Officer | m6
@ljheh.com.au

LJ Hooker Cairns Edge Hill (07) 4053 9999

81 - 83 Woodward Street, EDGE HILL QLD 4870
cairnsedgehill.ljhooker.com.au | cairnsedgehill@ljheh.com.au



All information contained therein is gathered from relevant third parties sources.
We cannot guarantee or give any warranty about the information provided.
Interested parties must rely solely on their own enquiries.