

Westmead, 403/7 Maple Tree Road

Modern Apartment with Resort-Style Amenities in a Prime Westmead Location

This beautifully presented apartment offers a spacious open-plan living and dining area with stylish floorboards that flow seamlessly throughout the space. The galley-style kitchen features high-quality stainless steel appliances, perfect for everyday living and entertaining.

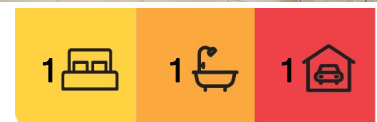
The generous queen-sized bedroom comes with a built-in wardrobe, and the open balcony off both the living area and main bedroom allows an abundance of natural light, creating a bright and welcoming atmosphere.

Additional features include an internal laundry, secure parking space, and a convenient storage cage for all your extra needs.

Resort-Style Amenities:



Disclaimer: All information contained therein is gathered from relevant third parties sources. We cannot guarantee or give any warranty about the information provided. Interested parties must rely solely on their own enquiries.



For Lease
\$640p/w

View
Sat 24th May @ 11:00AM - 11:20AM

Contact
Leanne Nehme
0414 977 907
leanne.nehme@ljhooker.com.au

LJ Hooker Bella Vista
02 8608 2332

- Rooftop garden space with stunning views
- Outdoor swimming pool, perfect for relaxing and unwinding

Property Facts:

- Preferred lease term: Minimum 12+ months
- Pets allowed: No
- Parking: Yes, secure parking available
- Storage: Yes, with additional storage cage



Building and Location:

- Prime position opposite Westmead Hospital
- Walking distance to Westmead Station & Westmead Shopping Village
- Close proximity to Western Sydney University (Westmead), Parramatta Marist, and Catherine McAuley High School

More About this Property

Property ID	795HHJ
Property Type	Apartment
Including	Toilets (1)

Leanne Nehme 0414 977 907

Principal & Senior Sales Executive | leanne.nehme@ljhooker.com.au

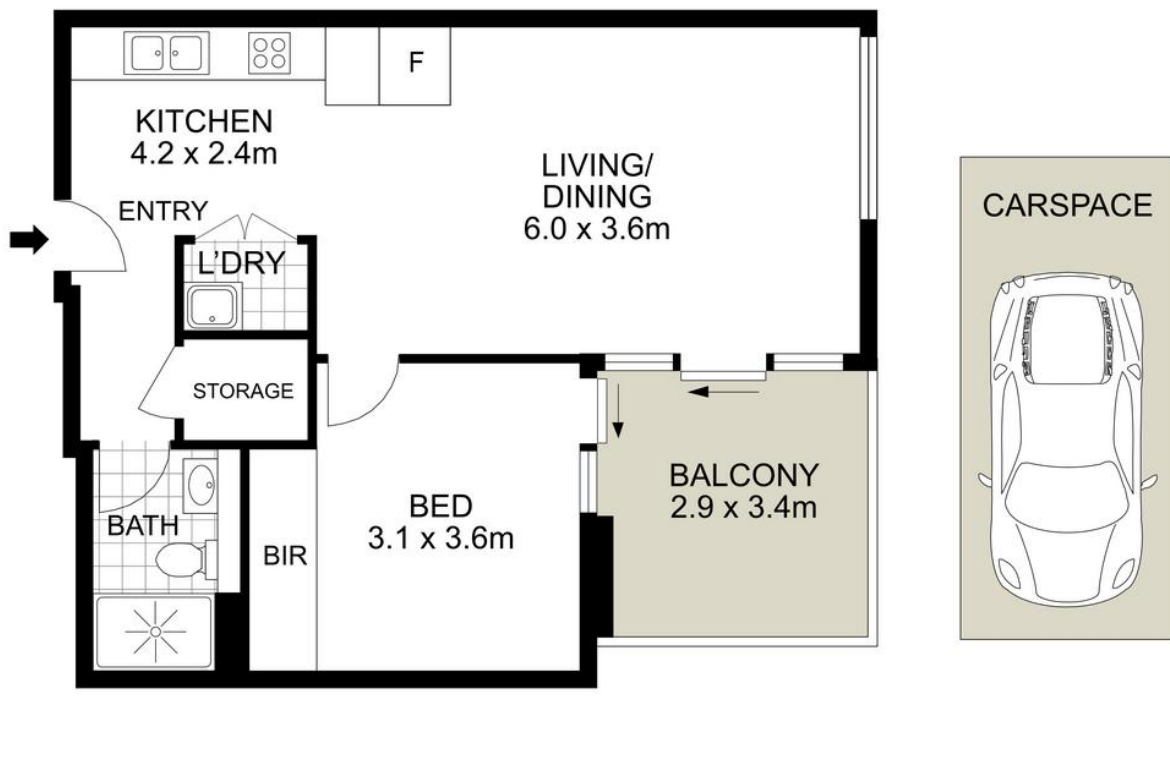
LJ Hooker Bella Vista 02 8608 2332

Shop 3, 1 Circa Boulevard, BELLA VISTA NSW 2153
bellavista.ljhooker.com.au | bellavista@ljhooker.com.au



LJ Hooker Bella Vista
02 8608 2332

Disclaimer: All information contained therein is gathered from relevant third parties sources. We cannot guarantee or give any warranty about the information provided. Interested parties must rely solely on their own enquiries.



403/7 Maple Tree Road, Westmead

PLANS SHOWN ONLY INDICATIVE OF LAYOUT. DIMENSIONS ARE APPROXIMATE.
Measurements are approximate and not to scale. The vendor, agency and supplier will accept no liability for its accuracy. Interested parties are advised to make their own independent enquiries.