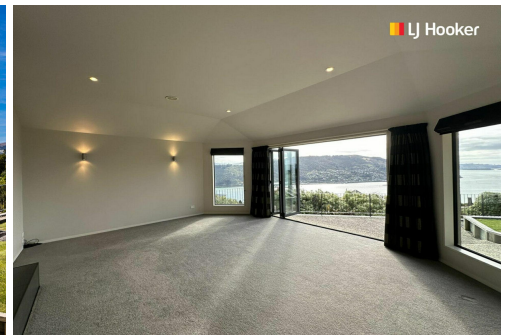


LEASED



Waverley, 48 Connell Street

Where timeless elegance and harbour views combine

A stunning home, with jaw dropping views set in a prestigious neighborhood - you really cannot get any better!

Upon entering the home, you are greeted with a sense of spaciousness and sophistication. The layout is designed for seamless living, with a focus on maximizing the connection between indoor and outdoor spaces. Large windows and opening glass doors invite natural light while totally framing the captivating views of the harbour.

The property boasts four bedrooms, offering ample space for family members or guests. The master bedroom features an ensuite bathroom and a walk-in robe, providing a luxurious retreat for relaxation. The remaining bedrooms are well-appointed and provide comfortable accommodation for family members or versatile usage such as a home office or gym.

4 

2 

3 

For Lease
Please Call

View
ljhooker.co.nz/3N6QGDS

Contact
Nathan Dickson
027 214 7265
nathan@ljhdunedin.co.nz
Nathan Dickson
027 214 7265
nathan@ljhdunedin.co.nz

The home has two distinct living areas, allowing for flexibility in entertainment and relaxation. Whether enjoying a cosy evening by the fireplace or hosting gatherings with friends and family, there is plenty of space to suit every occasion. The kitchen is equipped with modern amenities and up-to-the-minute appliances, catering to the needs of the discerning chef. With ample bench space and storage, meal preparation becomes a joy, accompanied by sweeping views of the harbour.

Internal access, downstairs, to the large basement garage adds convenience and security, providing ample space for your vehicles or boat as well as additional storage options for outdoor equipment or recreational gear.

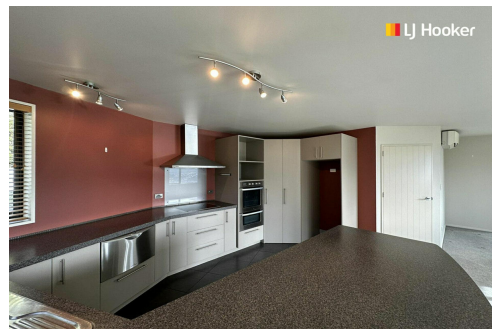
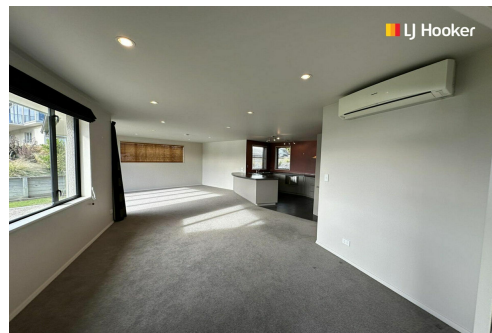
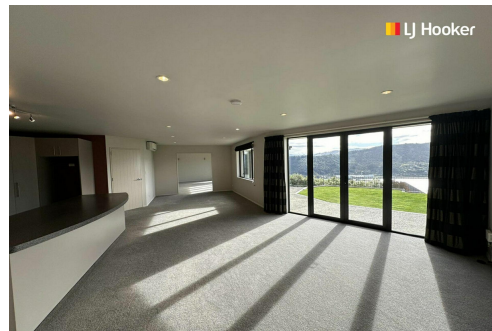
Don't delay in viewing this rare to the market property today! Call Nathan Dickson, Leasing Agent on 027 214 7265 to arrange a viewing.

More About this Property

Property ID	3N6QGDS
Property Type	House
Land Area	1054 sqm
Licensed Real Estate Agents (REAA2008)	

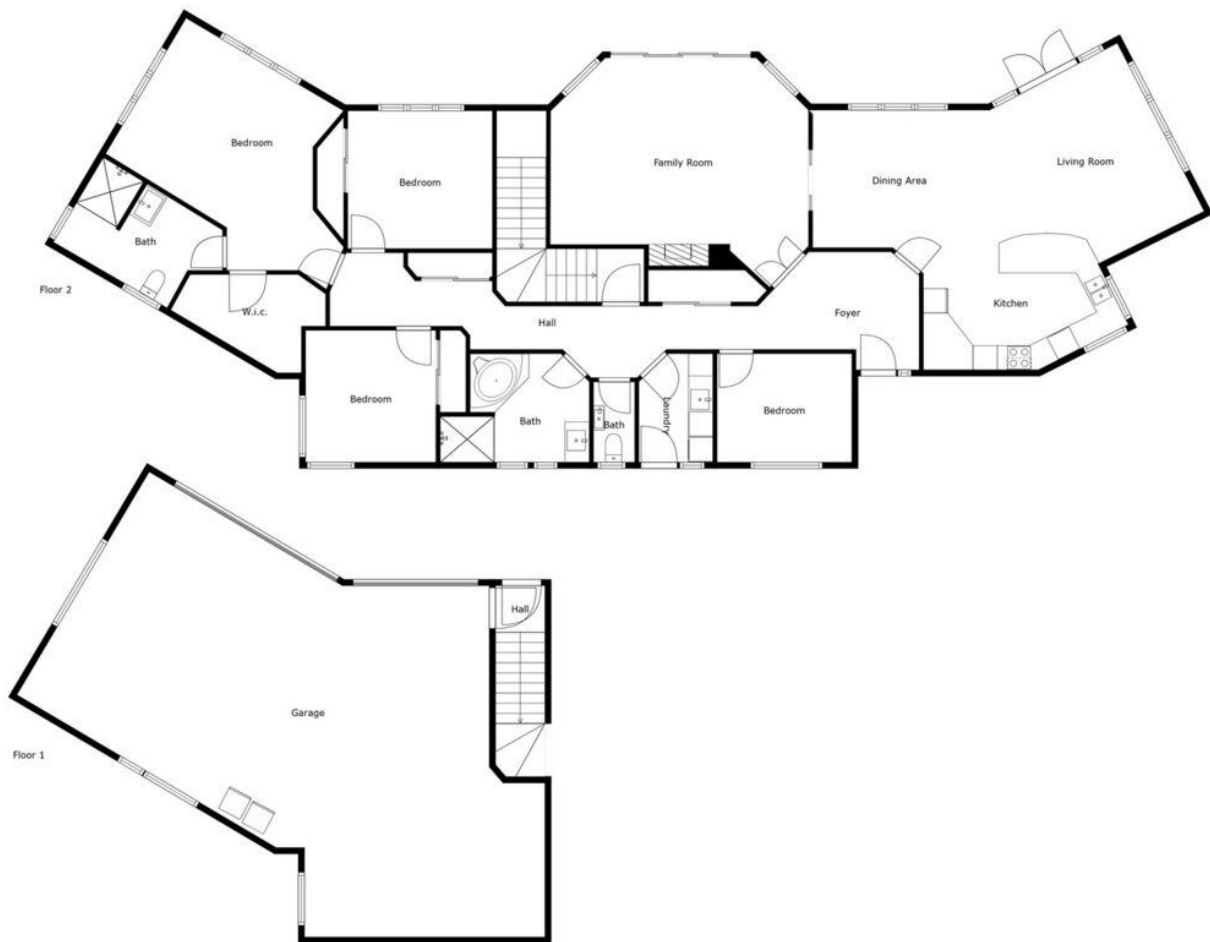
Nathan Dickson 027 214 7265
Leasing Agent | nathan@ljhdunedin.co.nz
Nathan Dickson 027 214 7265
Leasing Agent | nathan@ljhdunedin.co.nz

LJ Hooker Dunedin (03) 470 1370
Wayne Graham Realty Ltd
63 Musselburgh Rise, DUNEDIN 9013
dunedin.ljhooker.co.nz | dunedin@ljhdunedin.co.nz



Disclaimer: All information contained therein is gathered from relevant third parties sources. We cannot guarantee or give any warranty about the information provided. Interested parties must rely solely on their own enquiries.

LJ Hooker Dunedin
(03) 470 1370
Wayne Graham Realty Ltd



Sizes and dimensions are approximate, actual may vary