




36a Fishburn Crescent, Watanobbi

****APPLICATION APPROVED**** **Affordable Living in Watanobbi** **Awaits!**

Welcome to Fishburn Crescent in Watanobbi, where an incredible opportunity for affordable living awaits you. This charming rental property offers two comfortable bedrooms, perfect for a small family or roommates looking to share. The single bathroom is both functional and easy to maintain, while the garage ensures your vehicle is secure and protected from the elements.

Located in the heart of Watanobbi, this home offers convenience and accessibility to a range of local amenities. Just a short drive away, you'll find schools such as Wyong High School and Watanobbi Public School, making it an ideal location for families. Enjoy the community-centric atmosphere with parks and recreational facilities nearby, providing plenty of opportunities for outdoor activities and relaxation.

This property won't last long at such an attractive price point. Whether you're a first-time renter or seeking to downsize, this home offers exceptional value. Don't miss out on securing this affordable gem in a thriving area. Reach out today to express your interest!

2  1  1 

FOR RENT

Please Call

AGENTS

Gemma Vickers
0409 595 922
leasing.wyong@ljh.com.au

AGENCY

LJ Hooker Wyong
(02) 4353 2200

All information contained therein is gathered from relevant third parties sources.
We cannot guarantee or give any warranty about the information provided.
Interested parties must rely solely on their own enquiries.

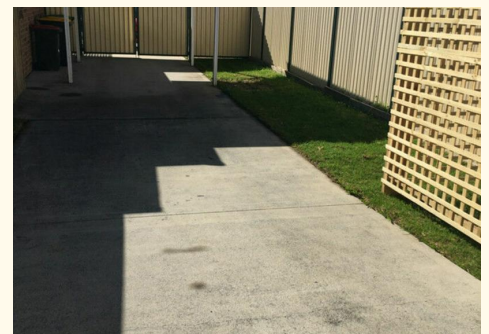
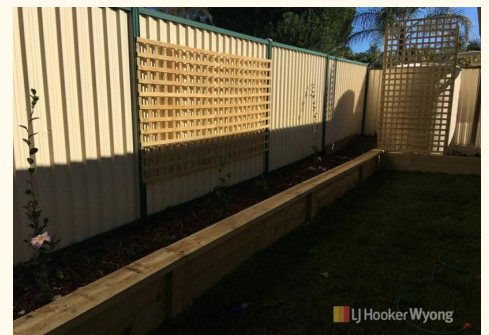
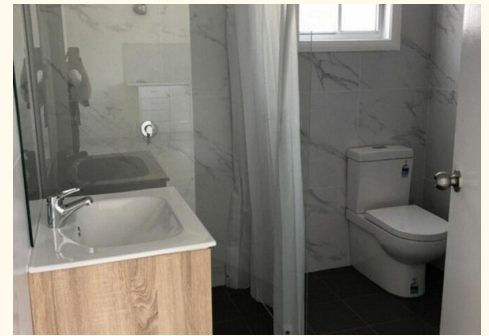


MORE DETAILS

Property ID 15S2FNA
Property Type House
Including Air Conditioning
Courtyard
Built-in-Robes
Secure Parking

Gemma Vickers 0409 595 922
| leasing.wyong@ljh.com.au

LJ Hooker Wyong (02) 4353 2200
132 Pacific Highway, WYONG NSW 2259
wyong.ljhooker.com.au | wyong@ljhooker.com.au



All information contained therein is gathered from relevant third parties sources.
We cannot guarantee or give any warranty about the information provided.
Interested parties must rely solely on their own enquiries.