

## Warwick, 5/2A Wallace Street

### Comfortable Low Set 2 Bedroom Brick Unit

Located on Wallace Street, close to the Condamine river, this unit is in an ideal location and very private at the back of the complex. An open plan kitchen, living and dining area low maintenance easy living you have all the space you need. 2 bedrooms with built in wardrobes. Bathroom and separate toilet. Single attached carport allowing easy access out of the weather to your home. The laundry is conveniently located at the rear of the carport. Common area lawn maintenance is included, you only have 1 small garden bed to maintain.

Open plan kitchen dining and living area.

2 good sized bedrooms.

Separate toilet and bathroom.

Single carport with laundry set up.



**For Lease**

\$325 wk

**View**

By Appointment

**Contact**

**Kristy Murphy**

rent@ljhw.com.au



**Disclaimer:** All information contained therein is gathered from relevant third parties sources. We cannot guarantee or give any warranty about the information provided. Interested parties must rely solely on their own enquiries.

**LJ Hooker Warwick**  
(07) 4661 8100



## More About this Property

Property ID	56ZH85
Property Type	Unit

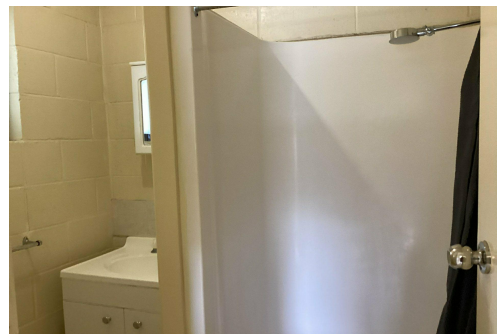
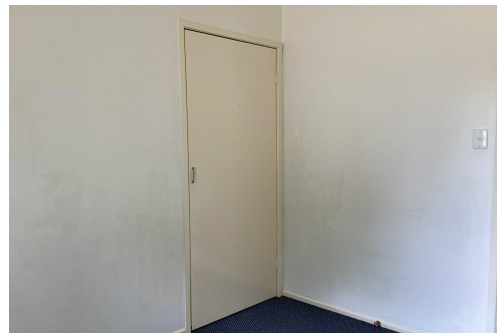
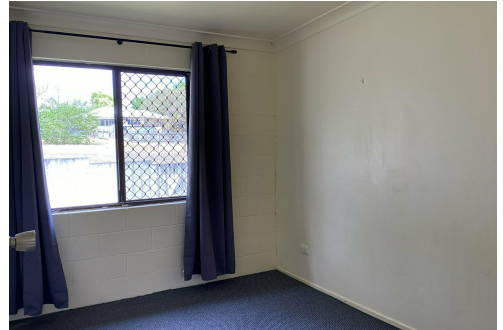
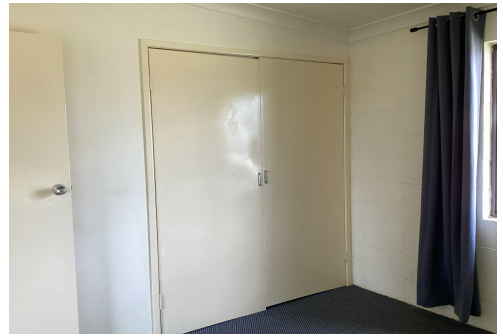
### Kristy Murphy

Property Manager | [rent@ljhw.com.au](mailto:rent@ljhw.com.au)

### LJ Hooker Warwick (07) 4661 8100

81 Albion Street, WARWICK QLD 4370

[warwick.ljhooker.com.au](http://warwick.ljhooker.com.au) | [office@ljhw.com.au](mailto:office@ljhw.com.au)



**Disclaimer:** All information contained therein is gathered from relevant third parties sources.  
We cannot guarantee or give any warranty about the information provided. Interested parties must rely solely on their own enquiries.

**LJ Hooker Warwick**  
**(07) 4661 8100**