

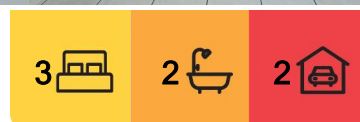
Warwick Farm, 18/8-10 Browne Parade

Spacious Apartment

This 3 bedroom apartment is located within walking distance to Liverpool Hospital, Westfield, train station & schools.

With features that include:

- Elevator access up to the third floor.
- 3 large bedrooms with mirror built-ins to all
- Main bedroom including en-suite
- Large open kitchen with gas cooking & dishwasher
- Light filled living area with dual access to a large private balcony
- Internal laundry including a dryer
- Double lock up garage
- Split system air conditioning & intercom



For Lease
Please Call

View
ljhooker.com.au/Z7JGRH

Contact
Ninweh Bityou
9601 8333
casula@ljhooker.com.au



LJ Hooker Casula
(02) 9601 8333

Disclaimer: All information contained therein is gathered from relevant third parties sources. We cannot guarantee or give any warranty about the information provided. Interested parties must rely solely on their own enquiries.

More About this Property

Property ID	Z7JGRH
Property Type	Apartment
Including	Ensuite Air Conditioning Toilets (2) Balcony Dishwasher Built-in-Robes Secure Parking

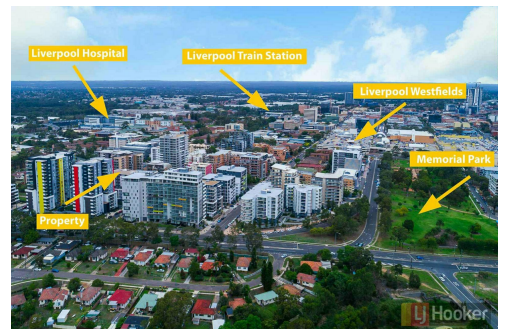
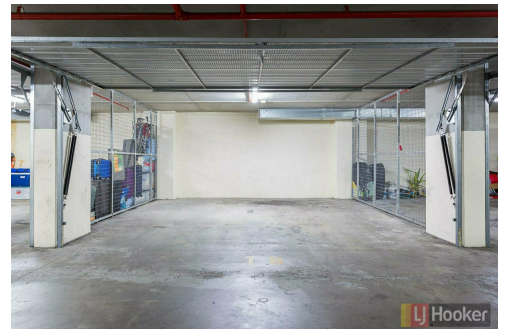
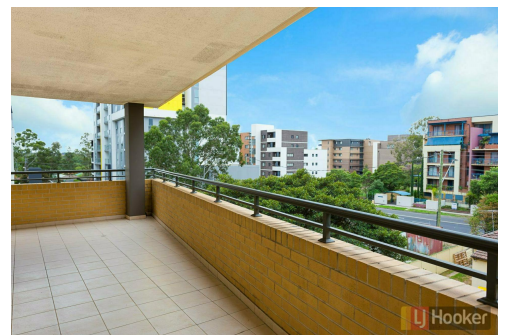
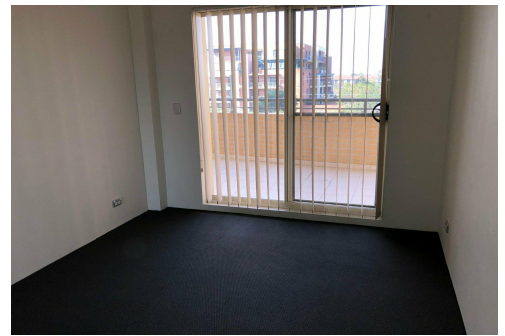
Ninweh Bityou 9601 8333

| casula@ljhooker.com.au

LJ Hooker Casula (02) 9601 8333

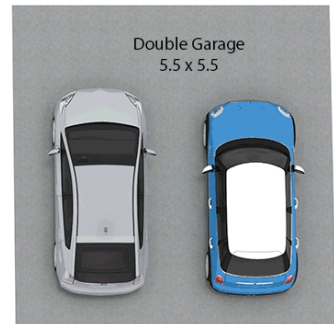
62 Marsh Parade, CASULA NSW 2170

casula.ljhooker.com.au | casula@ljhooker.com.au



LJ Hooker Casula
(02) 9601 8333

Disclaimer: All information contained therein is gathered from relevant third parties sources. We cannot guarantee or give any warranty about the information provided. Interested parties must rely solely on their own enquiries.



UNDERGROUND SECURE PARKING

Measurement are approximate. For illustrative purposes only
INT AREA 141 M²



LJ Hooker Casula
(02) 9601 8333

Disclaimer: All information contained therein is gathered from relevant third parties sources.
We cannot guarantee or give any warranty about the information provided. Interested parties must rely solely on their own enquiries.