

Wamberal, 10/79 Aldinga Drive

Stylish & Sunlit Home in Prime Location

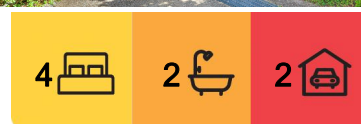
Nestled in a sought-after area, this stylish home offers comfort and convenience with a bright open-plan layout and modern upgrades. Enjoy easy access to local shops and shared complex amenities.

Property Features Include:

- Spacious 4 bedrooms with built-in wardrobes, including a luxurious master retreat with a private ensuite
- Contemporary 2 bathrooms, featuring a sleek new vanity in the main bathroom
- Light-filled open-plan living and dining, designed for seamless indoor-outdoor flow
- Chic modern kitchen with abundant storage, dishwasher & a brand-new induction cooktop
- Convenient internal laundry with extra storage space
- Ceiling fans throughout, ensuring year-round comfort
- Resort-style shared complex pool, perfect for relaxation and entertaining



Disclaimer: All information contained therein is gathered from relevant third parties sources. We cannot guarantee or give any warranty about the information provided. Interested parties must rely solely on their own enquiries.



For Lease
Please Call

View
ljhooker.com.au/1GYFGC1

Contact
Kira Morgan
0431 245 255
kira.morgan@ljhooker.com.au

LJ Hooker Terrigal
(02) 4385 8444

- Prime location, just a short walk to local shops for daily essentials
- Effortless connectivity, with an easy commute to Erina Fair and quick access to both ends of the coast
- Single Lock-up garage for peace of mind

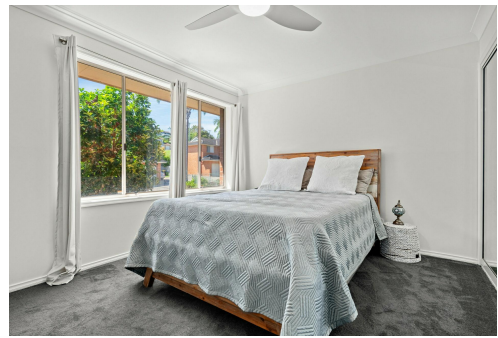
To arrange an inspection submit an online enquiry or Call 0431 245 255

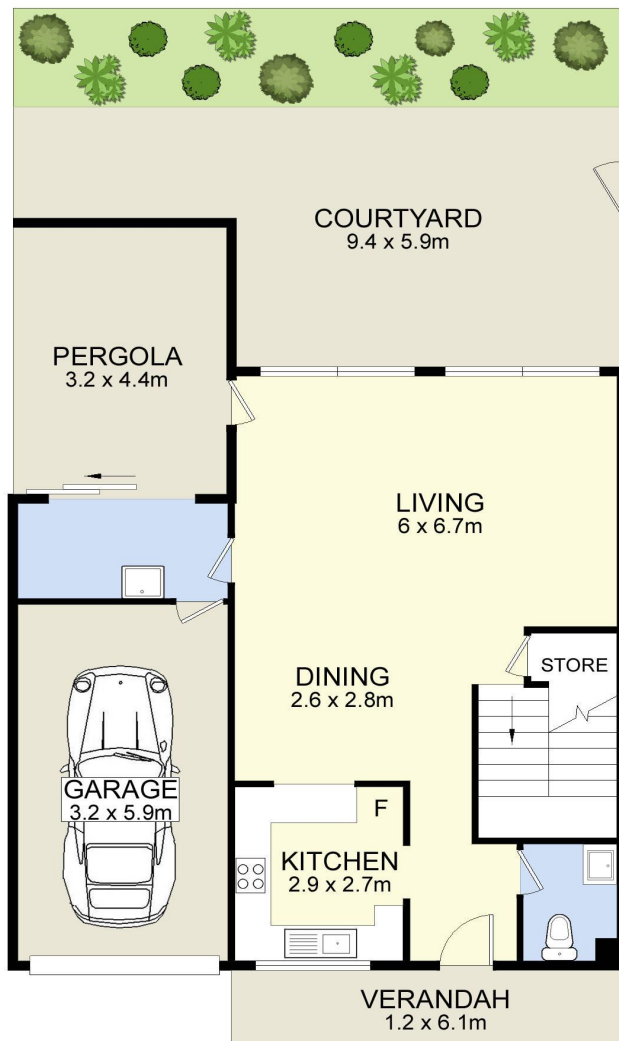
More About this Property

Property ID	1GYFGC1
Property Type	Townhouse
Including	Ensuite Air Conditioning Dishwasher Built-in-Robes Area Views Carpeted Close to Schools Close to Shops Close to Transport Garage Internal Laundry

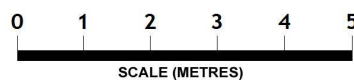
Kira Morgan 0431 245 255
 Leasing Consultant and Business Development Manager |
kira.morgan@ljhooker.com.au

LJ Hooker Terrigal (02) 4385 8444
 Shop 1 & 2, 1 Campbell Crescent, TERRIGAL NSW 2260
terrigal.ljhooker.com.au | terrigal@ljhooker.com.au





10/79 Aldinga Dr, Wamberal



INTERNAL AREA :- 120m²
 GARAGE AREA :- 19m²
 EXTERNAL AREA :- 74m²
 TOTAL AREA :- 213m²

Disclaimer: Plans prepared by Encapturelation Property Marketing. Indicative only. Dimension are approximate
 All information contained herein is gathered from sources we believe to be reliable. However we cannot guarantee its accuracy and interested persons should rely on their enquiries.