

Wamberal, 19 Hilltop Road

Prime Location in Wamberal

Situated on a highly sought-after street, this property is within walking distance to the beach, local cafes, public transport, and restaurants. With ample development potential, it features multiple living spaces and a versatile layout, perfect for families.

Property Features Include:

- 3 spacious bedrooms with built-in wardrobes and adjacent study nook
- Lower-level bedroom with private bathroom, ideal for older family members or teenagers
- 2 bathrooms, separate laundry facilities
- Central kitchen and dining area with butler's pantry
- Fully fenced backyard with low-maintenance gardens
- Ample under-house storage
- Gated car space and on-street parking
- Ceiling fans throughout, hardwood flooring, abundant natural light
- 3 month lease only



Disclaimer: All information contained therein is gathered from relevant third parties sources. We cannot guarantee or give any warranty about the information provided. Interested parties must rely solely on their own enquiries.

3

2

2

For Lease

\$650.00 Per Week

View

Wed 30th Oct @ 1:30PM - 1:45PM

Contact

Kira Morgan

0431 245 255

kira.morgan@ljhooker.com.au

LJ Hooker Terrigal
(02) 4385 8444

To arrange an inspection submit an online enquiry or Call 0431 245 255

More About this Property

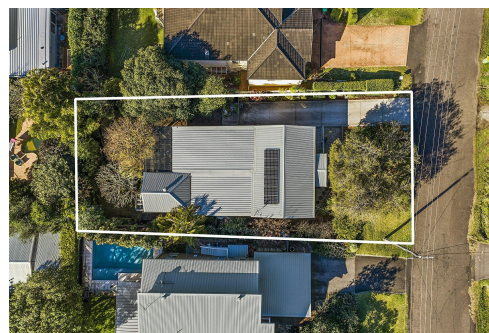
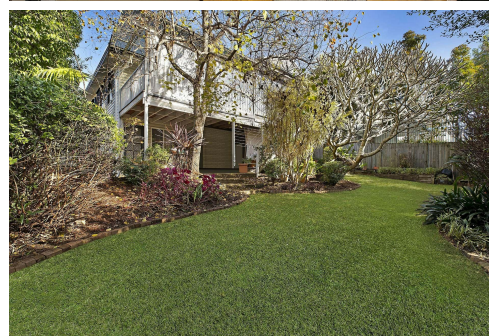
Property ID	1GK9GC1
Property Type	House
Land Area	575 sqm
Including	Close to Schools Close to Shops Gas Internal Laundry Storage

Kira Morgan 0431 245 255

Leasing Consultant | kira.morgan@ljhooker.com.au

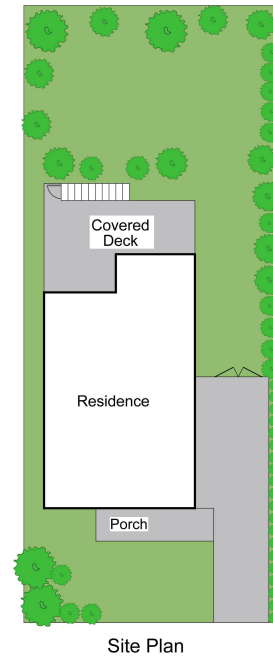
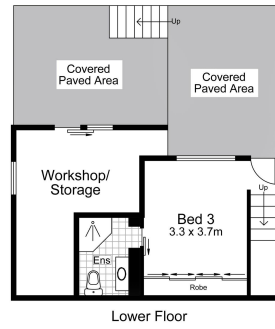
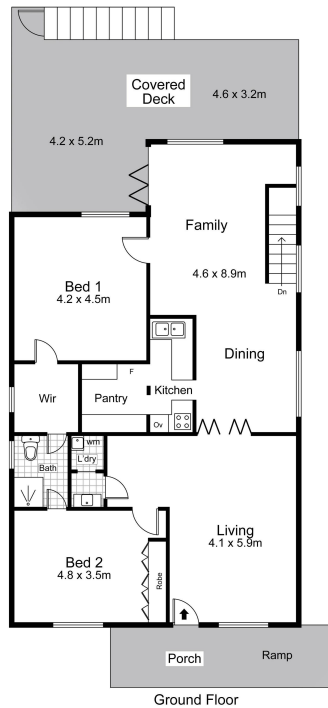
LJ Hooker Terrigal (02) 4385 8444

Shop 1 & 2, 1 Campbell Crescent, TERRIGAL NSW 2260
terrigan.ljhooker.com.au | terrigan@ljhooker.com.au



Disclaimer: All information contained therein is gathered from relevant third parties sources.
We cannot guarantee or give any warranty about the information provided. Interested parties must rely solely on their own enquiries.

LJ Hooker Terrigal
(02) 4385 8444



0 1 2 3 4 5 SCALE: METRES

Scale in metres. Indicative only. Dimensions are approximate. All information contained herein is gathered from sources we believe to be reliable. However we cannot guarantee its accuracy and interested persons should rely on their own enquiries

INT : 162m²
EXT : 82 m² **NOT TO SCALE**



19 Hilltop Road, Wamberal